



CRESCENT CONDUIT CUTTER

ATM-CCC42

- Heat treated cutting blade for cutting P.V.C. pipe and water hose up to 42mm diameter.
- Cuts cleanly without the need for de-burring.
- Heavy duty design and construction.
- Bright red colour for easy standout in the tool box and workplace.
- Jaw insert enables the cutting of additional profiles, including square profiles



MILWAUKEE JOBSITE STRAIGHT SCISSORS

ATC-48224044

- Iron Carbide Edge Blades
- Micro-Serrated Blades for Grip While Cutting
- Bolt Lock Technology
- Rust Protection



29 X 460MM SHOCKWAVE POWER UTILITY AUGER

ATC-48136769

- Single Spur Design
- Reinforced Anti-Friction PTFE Coating

WE MANUFACTURE ECO FRIENDLY IMPACT SOCKETS



© momento
MADE IN SWITZERLAND

IMPACT SOCKETS

All Momento products are manufactured under one roof since 1951. With swedish high quality steel and our own hardening process we manufacture a wide range of impact sockets and accessories. One of Momento's strengths is the ability to develop customized sockets.

AB Momento located in Flen, Sweden is the only manufacturer in the world exclusively devoted to machine operated sockets and accessories. The whole manufacturing process takes place under one roof; from the cutting of the steel rods to hardening and surface treatment. The company accounts for 25% of the total manufacture of impact sockets in Europe and more than 80% of Momento's production is exported to 60 countries. Key markets are automotive, mining, shipbuilding, wind power and the oil and gas industries.



As part of a long term environmental initiative, Momento is the first company in the world to have successfully developed a coating without using any heavy metals in the surface treatment process. The new coating, Momento Silverline™, has been developed with the aim to protect the environment through an environmentally friendly manufacturing process, but also to help Momento's clients worldwide to



MADE IN SWEDEN
SINCE 1951

respond to new environmental targets. Until today, black oxide has been the most common coating used on impact sockets because paint or chromium is not approved by ISO standards. Years of research and testing has proved that Momento Silverline™, with its light silver hue meets or exceeds all the performance characteristics of previous products.



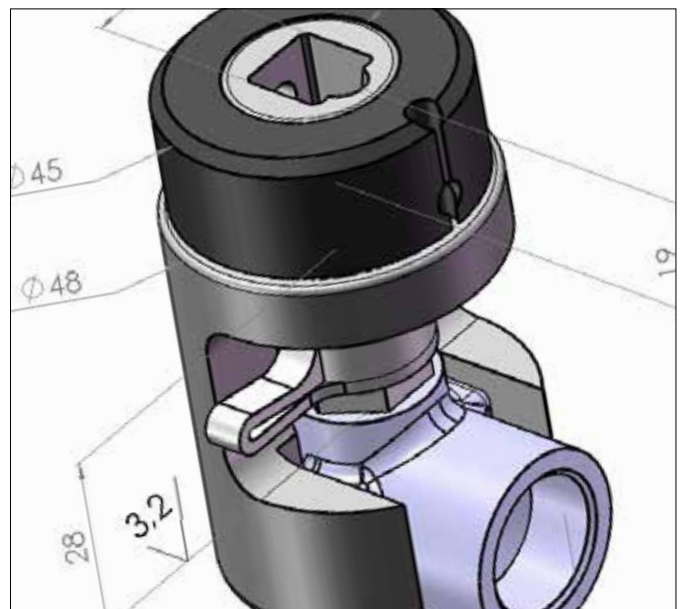
Momento's mission is to fill the gap between the power tool and the threaded fastener. We supply anything that you might need for this purpose. When it comes to power driving tools, impact sockets are the only answer. Momento's impact sockets and accessories will fit both impact wrenches, electric nutrunners and hydraulic torque wrenches.



Momento control the whole manufacturing process from design and calculation, cutting of the steel rods, machining, hardening and surface treatment.



A versatile heat treatment department fully equipped for tempering, annealing, casehardening, nitro carburizing, nitride hardening and carbonitriding secures the right properties for each product.



Momento design and produce special tools to meet the individual requirements of every single customer.

Momento's impact sockets and accessories conform to the international standards ISO 1174-2, 1703, 1711-2, 2725-2 and 2725-3. Momento are ISO 9001 quality certified and ISO 14001 certified for their environmental management system.





STANDARD IMPACT SOCKETS

Available for square drives: 1/4"-3 1/2"
Wrench widths of 4-255 mm as standard.

The classic 6-point socket for all types of uses.



THIN WALL-T

Available for square drives: 3/8"-1"
Wrench width between 6-60 mm.

For better access in tight applications.

NOTE! The thin-walled socket should not be used with impact wrenches.



LONG-L

Available in different variants such as double hexagon (D6K), surface and others.

Available for square drives: 3/8"-2 1/2"
Wrench widths between 4-170 mm.

The long socket allows you to reach the nut even if the screw is sticking up just above the wing nut.



12-POINT SOCKETS - D6K

D6K means double 6-edge. These sockets make it easy to board the screw as it has double 6-edge grip in the socket.

Available for square drives : 1/2"-1 1/2"
Wrench width between 10-105 mm.

Also available in thin-wall design.



SURFACE DRIVE-SF

Surface drive power sockets are designed primarily for assembly machines. Particularly suitable in multiple mounting.

Available for square drives: 3/8"-1"
Key widths between 8-36 mm.



ADAPTERS-PA, IPA & UK

We have a wide range of adapters and universal joints for increased flexibility between different socket connections and drive lugs on the machine. With Momento's compact efforts reduced overall height to a minimum. IPA is provided with magnet that keep them in the right position.



EXTENSIONS-EB

For square drives: 1/4"-2 1/2"
Extensions are available in several different lengths.

The smaller models have locking with spring pin.
The larger models have through holes for the locking pin.



UNIVERSAL SOCKETS-US

Momento's universal sockets are spring loaded and can be set to the desired angle. (30 degrees for power tools.)

For square drive: 1/2"
Wrench widths between 13-24 mm.

Available in both short and long version.



AXIAL NUT SOCKETS-KM

KM sockets for mounting/dismounting of bearings nuts. They replace hook keys and makes it possible to use the impact wrench or torque wrench.

Available for square drives: 3/8"-1" from KM-0 and up.



STUD RUNNER SOCKETS

Bolt bushings for mounting studs. We have a wide range of both metric and inch thread studs.

For square drives: 1/2"-1"

Thread: M6-M48 (also available with thread of inch).



HOLDER AND BITS

We have bit holders with square drives: 3/8"-1 1/2"

Bits are from 5-50 mm hexagon and corresponding inch sizes. Bits is locked with a pointed screw against the V-shaped groove in bits corner.

If necessary, screw secured further with thread locker.



4-POINT SOCKETS-4K

Square sockets used to tighten screws with square heads.

Available for square drives: 3/8"-1"

Wrench width: 5-46 mm (also available in corresponding inch sizes).



TORQUE SOCKETS-NMC

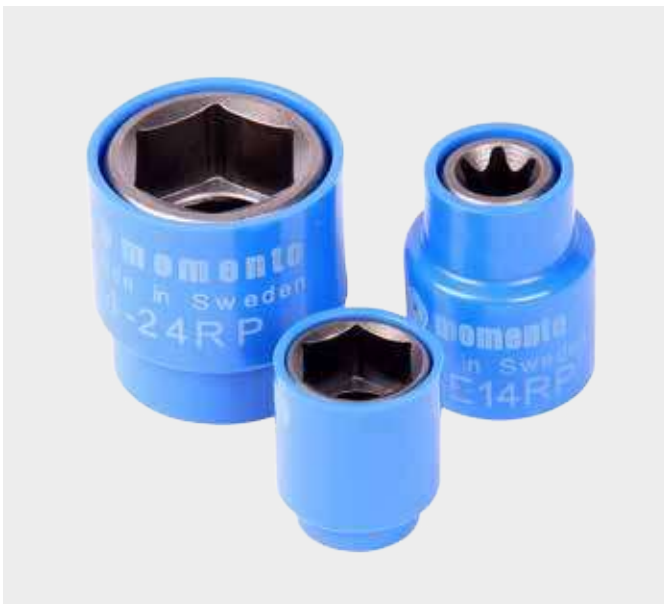
Torque sockets are designed for tightening of automobile wheels with impact wrenches. The long and narrow waist dampens excess power of the wrench. The actual torque depends on the wrench fitness and supply pressure. Check regularly with a torque wrench. Wrench width: 17-21 mm. Square drive: 1/2". Colour coding for identification of the desired torque.



SOCKET SETS

In our catalogue you also find sets of sockets in different sizes to meet your needs. Hexagon, Torx, Long, IPA and Torque sockets are some examples.

See our main catalogue for more information!



SILVERLINE™ COVER

When working with screwdriving on sensitive surfaces (for example lacquered steel in the automotive industry) it needs a protected socket to avoid scratches and paint damage. Momento's Silverline™ Cover is available in both 6-edge and Torx performance from 3/8"-3/4" square drive and wrench width between 6-24 mm.

See separate brochure for more information!



BOLTING ACCESSORIES

Momento also offer a program with accessories for hydraulic torque tools regardless of manufacturer. The Reducing Inserts (RI), Back-Up Wrenches (BUW) and Safety Nuts (SN).

See separate brochure for more information!

WORLDWIDE PRESENCE



MADE IN SWEDEN SINCE 1951 / www.momento.se

MOMENTO
P.O. Box 14
642 21 Flen
Sweden

VISITING ADDRESS
Kungsvägen 68
642 34 Flen
Sweden

CONTACT US
+46 157-690 00
info@momento.se
www.momento.se





ABN 44 071 568 771

"A-Z Product Solutions for Trade and Industry"

sales@all-trades.com.au

www.all-trades.com.au

ALL TRADES RED CANVAS COVER

ATM-KNAPSACK-COVER

FEATURES

- Red Canvas Cover
- Suits Rega 16L Knapsack
- 40x50x20 (wxhxd)



CUSTOM ASSEMBLY

ALL TRADES NST CANVAS KIT BAG

ATM-NST-KITBAG

FEATURES

- Custom assembly for NST Kits
- Perfect fit for our NST kit
- Canvas Construction
- Braided Strap (durable and comfortable)
- Compartments for all components of kit



Sydney Office
11/5 Hudson Ave
Castle Hill NSW 2154
Ph: 02 8850 2700



Melbourne Office
4/5 Kelleys Rd
Rowville VIC 3178
Ph: 03 9780 4850

PEAR HEAD RATCHET (3/4' DRIVE)

TEC-25550

- 3/4' Drive
- Heavy Duty



NUT DRIVER - 3/8'

TEC-5793

- NUT DRIVER - 3/8" - 1/4" HEX DRIVE X 45 MM LONG

DEEP SOCKET IMPACT

ATM-60522024

- Socket Size: 24mm
- Drive Size: 1/2"
- Length (L): 78mm
- L2: 24mm
- D1: 35mm
- D2: 30mm
- Weight: 0.32kg



PANASONIC LITHIUM CR2

PAN-46000-003CB

- 3V
- 750mAh
- Photographic lithium battery
- Panasonic



0-9 PUNCH SET IN 6MM

TEC8882

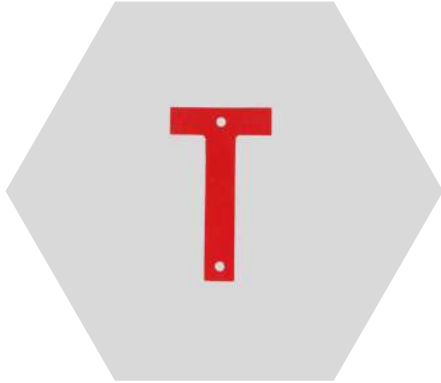
- 6mm Number Punch Set Machined from alloy steel and heat treated for maximum toughness and quality of impression. With tapered points and additional mark to aid accurate positioning. Each punch individually marked with the size and character identifier. Character Sizes: 1/4"(6mm)
Contains 9pcs: (0-9) • Supplied in fitted plastic case

PUMP AND BOTTLE

PBP-RND75X150-P

- 500ml Bottle Dimensions
- 75mm Diameter round x 150mm Tall
- Pump Included





-
-
-
-

"RED T'S"

ATM-REDT

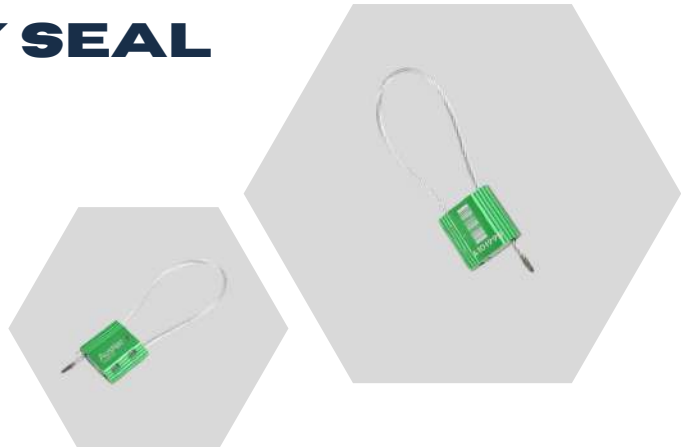
Class 2 Reflective
Aluminium Material
2 holes
100 Pack

MISC.

PILLAR SECURITY SEAL LOCK

SHA-REC102AU

- Aluminium wire lock
- Green colour
- AUSNET LOGO/Barcode
- Secures street pillars



SCREW SELF DRILLING T17

ATM-EZI603

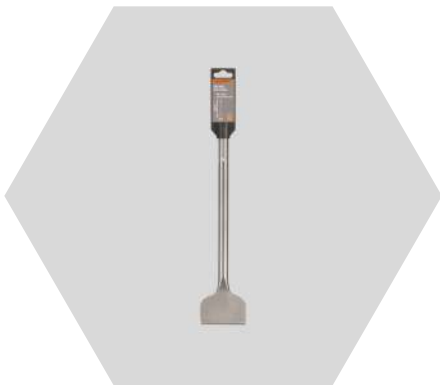
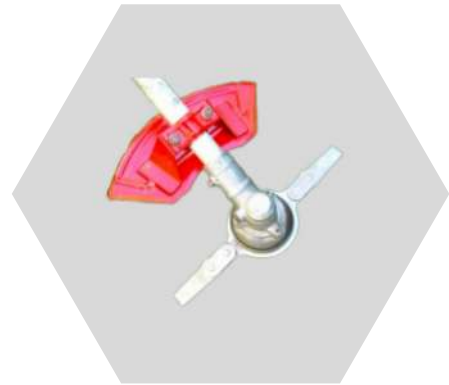


- Has a special long sharp self drilling point with a flute (Type 17) that cuts the timber fibres as it is screwed in.
- Timber fibres are collected in the flute and reduces the potential for splitting.
- The self drilling type 17 point can also pierce light gauge steel up to 0.6mm without predrilling. The head is a hex flanged.
- Easy to install using a 5/16" socket for 10 and 12 gauge or 3/8" socket for 14 gauge or appropriate driver bit in a power tool.
- 1000 IN PACK

HEAVY DUTY WEED WAKKA

ATM-WWK-HD

- Ideal for clearing everything from fine grass to tussock, blackberry, lantana and tree saplings up to thumb thickness
- Double articulated blades reduce kickback if solid object is hit



CHISEL BIT SDS MAX

ATM-2390240

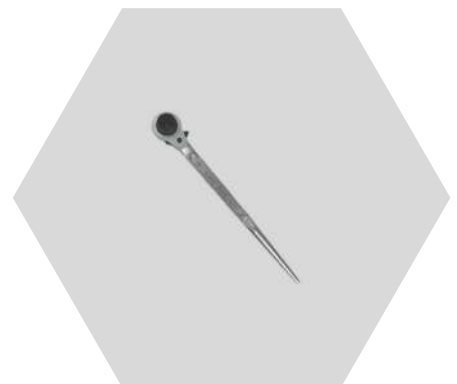
-
-
-

Made from durable steel
Great for light demolition tasks
Suits any brand of SDS Max tools

PODGER RATCHET

ATM-RRP2430

- ATM-RRP2430 - PODGER RATCHET "KING DICK" - 24 X 30MM
- Precisely machined
- Heat-treated
- Zinc plated
- High quality steel





MILWAUKEE 18PCE SHOCKWAVE IMPACT DRIVER BIT SET

ATC-48324403

- 3 x Phillips Bit 25mm: P1, P2 & P3
- 2 x Slotted Bit 25mm: SL 1/4", SL 3/16"
- 2 x Square Bit 25mm: SQ1, SQ2
- 3 x Phillips Bit 50mm: 2 x P2, P3
- 3 x Square Bit 50mm: 2 x SQ2, SQ3
- 2 x TORX Bit 50mm T15, T20
- 1 x 3 1/2" Phillips #2
- 1 x 3 1/2" Square Drive #2
- 1 x Case with Bulk Storage Container
- 1 x SHOCKWAVE Magnetic Bit Holder



SCREWDRIVER SET (8P)

ATM-SD8SET

- Working Capacity of 1000v
- 8 pieces included, with all sizes needed for any job



DURATOOL 30P HEX KEY SET

ATM-2773618

- 0.7mm, 0.9mm, 1.3mm, 1.5mm, 2mm, 2.5mm, 3mm, 4mm, 4.5mm, 5mm, 5.5mm, 6mm, 7mm, 8mm, 10mm, Imperial: 1/36", 1/28", 1/20", 1/16", 5/64", 3/32", 7/64", 1/8", 9/64", 5/32", 3/16", 7/32", 1/4", 5/16" & 3/8"
- Hex Keys in a Moulded Case
- Jaw mechanism provides 3X more gripping power
- 2x Longer life: High grade alloy steel is heat treated for maximum toughness and durability

SHARPIE EXTREME MARKER

REP-SB-S30063

- 1mm Tip
- Fine point
- High level of weatherability
- 12 pack

**HAND TOOLS**

8 PIECE SCREWDRIVER SET

CAB-HVSDK6

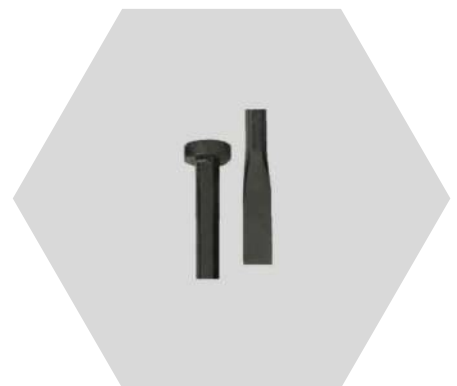
-
-
-
-
-

1000v Insulation Working Capacity
8 Piece Set
4p Slotted Screwdrivers
3p Phillips Screwdriver
1p Mains Tester

FENCE BAR 1650X25MM

MUM-5FB165025

- Chisel point end is ideal for digging
- The upset head is great for ramming or packing soil when setting posts



SOLDERING IRON KIT

PRI-211245

FEATURES

- Gas on/off & flame adjustment lever
- Integrated folding stand
- Piezo auto ignition trigger and a continuous flame switch

KIT INCLUDES

- Refillable torch
- Chisel tip, fine soldering tip, flat tip, conical tip, large soldering tip, knife tip
- Heat shrink assembly
- Protective cover
- Cleaning sponge
- Solder
- Storage case

SPECIFICATIONS

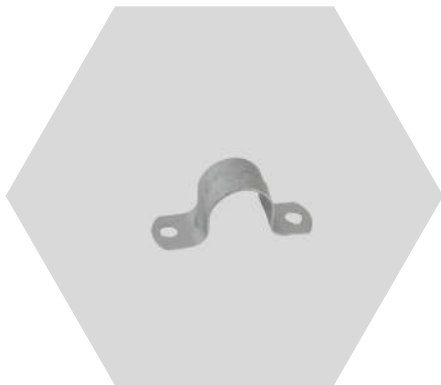
- Consumption: 6.63 g/hr
- Fuel storage size: 10 g
- Burning time: 90 min
- Flame length: 35 mm
- Effect: 0.07 kW



NON-CONDUCTIVE TAPE MEASURE (3M)

ATM-ESZ3NGC

- 19.5mm x 3 metre
- Tested to 20kV
- Non-Conductive



20MM SADDLE (DOUBLE SIDED)

MARGS075

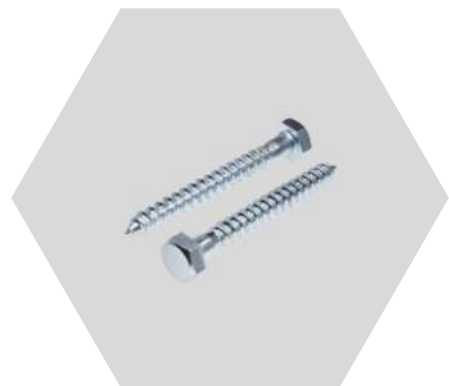
-
-
-
-

Galvanised construction
Anti-Corrosion
100 Pack
Double sided for securing items

COACH SCREW - LOW TENSILE GALV

ATM-20016234

- LOW TENSILE GALV - HEX - 130MM M16 - PER PCE





ABN 44 071 568 771

"A-Z Product Solutions for Trade and Industry"

sales@all-trades.com.au

www.all-trades.com.au

ALL TRADES AUGER BITS

DESCRIPTION

Our Augers are designed to be driven by Hydraulic, mains, or battery operated impact wrenches and drills. Lengths from 225mm through to 900mm. Diameters from 10mm through to 40mm. Guaranteed to match or beat any genuine competitors written quote! Excellent customer feedback on quality, durability, and value for money.

PART NUMBER

- ATM-8309 + (010-016)
- ATM-8318 + (016-040)
- ATM-8324 + (016-028)

SPECS

- (10-16)mm x 225mm
- (16-40)mm x 457mm
- (16-28)mm x 610mm



CUSTOM ASSEMBLY



Sydney Office
11/5 Hudson Ave
Castle Hill NSW 2154
Ph: 02 8850 2700



Melbourne Office
4/5 Kelleys Rd
Rowville VIC 3178
Ph: 03 9780 4850

KOOLTEG ALUMINIUM FOIL TAPE

DESCRIPTION

- 40 micron Aluminium Foil
- Good conformability / flexibility
- High bond acrylic adhesive
- Temp range -20° to 110°



SELF AMALGAMATING WEATHER PROOF TAPE

DESCRIPTION

- Provides protection where heat/flame is prohibited
- Covers any shape including high transition areas and elbows
- Strips easily and cleanly
- Layers fuse together to form a seal that provides complete environmental protection and insulation
- Excellent resistance to water, UV and ozone
- Proven long term protection
- Continuous operating temperature: -40°C to 100°C





ABN 44 071 568 771

"A-Z Product Solutions for Trade and Industry"

sales@all-trades.com.au

www.all-trades.com.au

STAR-M AUGER BITS

DESCRIPTION

- These ranges are often referred to as clean cutting augers, due to the clean cutting wing, or spur on the front
- The spur pre-cuts the material before the cutting edge & provides a
- Clean entry & exit
- The screw point pulls the bit through
- The single twist or flute clears the chips & leaves a cylindrical drilling body to aid straight drilling
- These bits drill a tidy hole without surface breakage & are best suited to soft wood such as those found in house frames



Sydney Office
11/5 Hudson Ave
Castle Hill NSW 2154
Ph: 02 8850 2700



Melbourne Office
4/5 Kelleys Rd
Rowville VIC 3178
Ph: 03 9780 4850

DURACELL BATTERY (AA)

DUR-MN1500

- High performance, long lasting Duracell AA batteries
- Economical bulk packaging
- Ideal for demanding, high drain applications
- 24 PACK



9V PROCELL BATTERY

DUR-PX1604-12

- High performance, long lasting Duracell AA cell batteries.
- Economical bulk packaging.
- Alkaline copper top, mercury free.
- Ideal for demanding, high drain applications.

AAA DURACELL BATTERIES

DUR-MN2400

- High performance, long lasting Duracell AAA batteries.
- Economical bulk packaging.
- Alkaline copper top, mercury free.
- Ideal for demanding, high drain applications.
- 24 pack





CABLE TIES (PER 100)

CAB-CT250BK

-
-
-
-

Loop Tensile Strength: 54kg

Bundle Diameter: 102mm

Length: 370mm

Width: 7.6mm

MISC.

CABLE TIE - SCREW MOUNTABLE

ATM-SM143

- For long life and dependable service
- With cable ties available in lengths from 100mm to 1168mm



BLACK AD BASE 12KG

DEN-ADBASE

- Highly durable rubber black base with handle.
- Suits 'Ad Base' style 600x900mm signs (available separately)
- Suitable for warehouses, loading docks, carparks, entrance areas, roadways



ABN 44 071 568 771

"A-Z Product Solutions for Trade and Industry"

sales@all-trades.com.au

www.all-trades.com.au

NYLON CABLE TIE ULTRA HEAVY DUTY

FEATURES

- Made from Polyamide 6,6,
- Halogen Free Cable Tie
- Smooth round edges do not cut insulation
- Smooth round edges, safe and will not cut insulation
- UV stabilised for outdoor use

SPECIFICATIONS

- Loop Tensile Strength: 114kg
- Bundle Diameter: 120mm
- Length: 480mm
- Width: 12.6mm
- Thickness: 2.1mm
- Conformance Standards: UL 62275, IEC62275



Sydney Office
11/5 Hudson Ave
Castle Hill NSW 2154
Ph: 02 8850 2700



Melbourne Office
4/5 Kelleys Rd
Rowville VIC 3178
Ph: 03 9780 4850

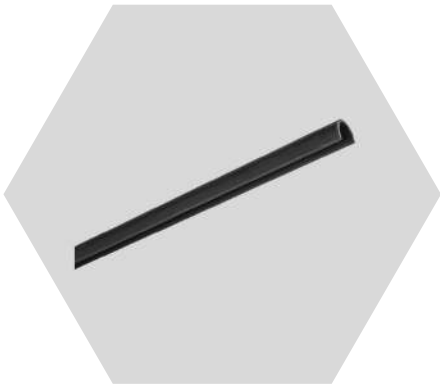
GUY WARNING GUARD TUBE

ATM-GG-P3020S

- PVC Construction
- Spiral Cut for ease of installation
- Visually bright
- 2m Length
- 20 PACK



MISC.



EARTH WIRE COVER GUARD

ATM-PKG-019-12-G

- UV stabilised material
- Impact resistant
- Insulation properties
- The option of fire retardant material (PKGFR type)
- In three designs, U shaped, circular fully enclosed or flared

CLOUT NAILS

ATM-N907249

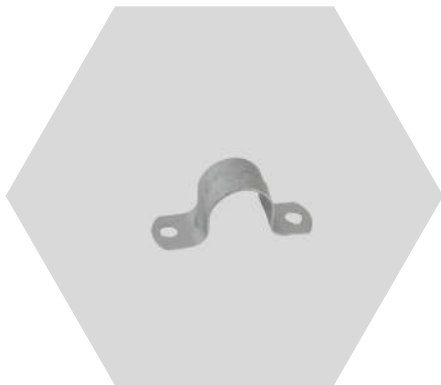
- Galvanised
- High corrosion protection
- 316 Grade Stainless Steel
- Large flat head for flush fit
- 250 PACK



NON-CONDUCTIVE TAPE MEASURE (3M)

ATM-ESZ3NGC

- 19.5mm x 3 metre
- Tested to 20kV
- Non-Conductive



20MM SADDLE (DOUBLE SIDED)

MARGS075

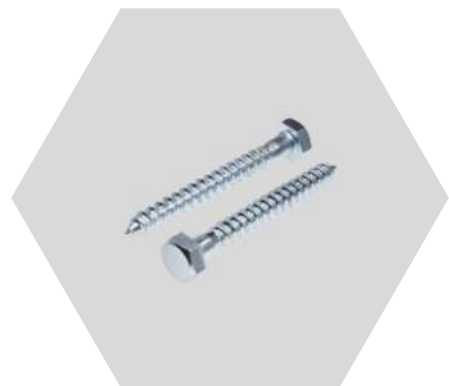
-
-
-
-

Galvanised construction
Anti-Corrosion
100 Pack
Double sided for securing items

COACH SCREW - LOW TENSILE GALV

ATM-20016234

- LOW TENSILE GALV - HEX - 130MM M16 - PER PCE



PANASONIC LITHIUM CR2

PAN-46000-003CB

- 3V
- 750mAh
- Photographic lithium battery
- Panasonic



0-9 PUNCH SET IN 6MM

TEC8882

- 6mm Number Punch Set Machined from alloy steel and heat treated for maximum toughness and quality of impression. With tapered points and additional mark to aid accurate positioning. Each punch individually marked with the size and character identifier. Character Sizes: 1/4"(6mm)
Contains 9pcs: (0-9) • Supplied in fitted plastic case

PUMP AND BOTTLE

PBP-RND75X150-P

- 500ml Bottle Dimensions
- 75mm Diameter round x 150mm Tall
- Pump Included



WIRE BRUSH WITH SCRAPERS

ATM-TJQ0065

- Long lasting carbon steel wire bristles
- Heavy duty wooden handle for added comfort
- Narrow head for hard to reach area



DYMARK SPRAY & MARK

DYM-40013511

- Toluene-free formula
- High opacity, high quality, true colour pigment loading
- Applications include construction, landscaping, civil works and surveying
- Unique spray pattern specifically designed for spot marking as well as "writing" applications
- 12 in carton



DOW CORNING CLEAR SILICON

ATM-S732CL

- General purpose sealant
- Paste consistency
- Bonding agent
- Space-filling rubber adhesive



SHARPIE EXTREME MARKER

REP-SB-S30063

- 1mm Tip
- Fine point
- High level of weatherability
- 12 pack

**HAND TOOLS**

8 PIECE SCREWDRIVER SET

CAB-HVSDK6

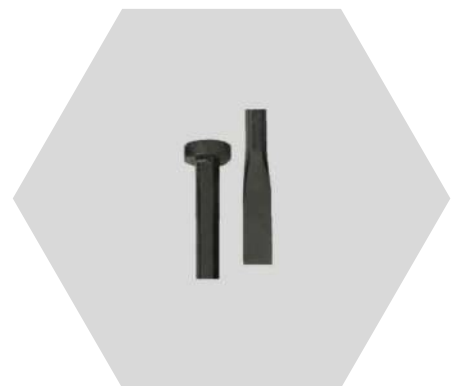
-
-
-
-
-

1000v Insulation Working Capacity
8 Piece Set
4p Slotted Screwdrivers
3p Phillips Screwdriver
1p Mains Tester

FENCE BAR 1650X25MM

MUM-5FB165025

- Chisel point end is ideal for digging
- The upset head is great for ramming or packing soil when setting posts



RAINBOW TELCO WASP & ANT SPRAY

DESCRIPTION

Because our bug spray contains one of the most powerful active ingredients, it quickly knocks down flying and stinging insects. This superior solvent-based product is safe for use in and around utility and telecom equipment. The high output shotgun spray pattern delivers a high percentage of the formula to the target from a safe distance of 15'. It also has the highest dielectric strength (48,100 volts) available to ensure a greater safety when working around medium to high voltage. NEETRAC and Bellcore/Telcordia tested. Safety tested on rubber elbows and cable joint compounds.



VOLT SAFETY GLOVE TALC

DESCRIPTION

- For use with Insulated Gloves
- Glove insertion/removal made more efficient
- Non-conductive
- White
- Limits the effects of sweating
- Increases comfort



20L WATER CONTAINER

ATM-JE8220

- Australian made
- UV stabilised
- Water tight O ring seal on the lid will keep the contents dry
- Ideal for storing virtually anything



MISC.



KNAPSACK COVER RED

ATM-KNAPSACK-COVER

-
-
-

Red Canvas Cover
Suits Rega 16L Knapsack
40x50x20 (wxhxd)

REGA KNAPSACK FIRE FIGHTER BACKPACK

ATM-KS-RGD-C3-R16

- Ideal alternative to an air / water fire extinguisher.
- It is designed to extinguish small low intensity fires such as spot fires in a bush fire situation.
- 1.2lt per minute water delivery
- Comfortable two strap fit





ABN 44 071 568 771

"A-Z Product Solutions for Trade and Industry"

sales@all-trades.com.au

www.all-trades.com.au

CUSTOM ASSEMBLY

LINESMAN TWO POUCH DILLY BAG W/BELT

ATM-1322

DESCRIPTION

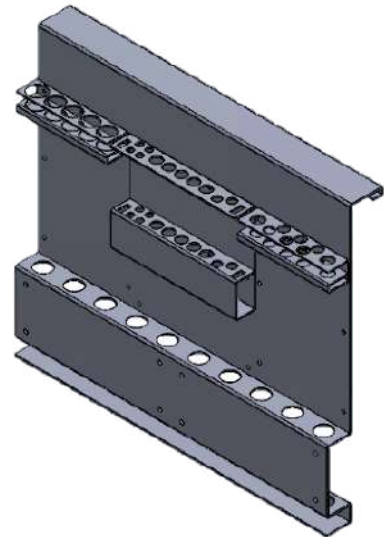
- Leather construction
- Durable
- Insulated



ALL TRADES HDPE TOOL BOARD

FEATURES

- Made to specification
- Custom Design
- Compartments for Tools & Storage
- Insulated
- Canvas Construction
- HDPE Backing



ALL TRADES LOAD TESTER CARRY BAG

ATM-LT240A15

FEATURES

- For use with our highly popular load tester
- Direct fit for load tester
- Canvas construction
- Durable outer



Sydney Office
11/5 Hudson Ave
Castle Hill NSW 2154
Ph: 02 8850 2700



Melbourne Office
4/5 Kelleys Rd
Rowville VIC 3178
Ph: 03 9780 4850

BIG LUGG TOOL HOLDER

DESCRIPTION

- Fully adjustable for almost any hand held power tool
- Use to hold cordless drills, nailers, staplers, saws, and more
- Fits any tool belt or waistbelt and clips on and off in seconds
- Swivels out of the way against your hip when not in use
- Durable all metal construction



STANLEY CHALK REEL KIT

DESCRIPTION

- Reel case is constructed of ABS plastic for impact resistance
- On-board hook storage
- Stainless-steel hook for rust resistance
- Sliding door for easy filling
- Folding crank handle stores neatly into case
- Reel capacity: 1oz. chalk





ABN 44 071 568 771

"A-Z Product Solutions for Trade and Industry"

sales@all-trades.com.au

www.all-trades.com.au

CUSTOM ASSEMBLY

LINESMAN TWO POUCH DILLY BAG W/BELT

ATM-1322

DESCRIPTION

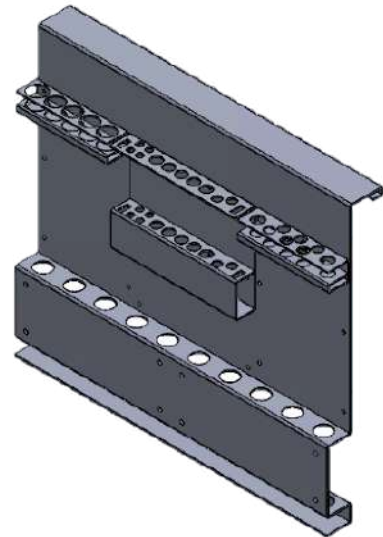
- Leather construction
- Durable
- Insulated



ALL TRADES HDPE TOOL BOARD

FEATURES

- Made to specification
- Custom Design
- Compartments for Tools & Storage
- Insulated
- Canvas Construction
- HDPE Backing



ALL TRADES LOAD TESTER CARRY BAG

ATM-LT240A15

FEATURES

- For use with our highly popular load tester
- Direct fit for load tester
- Canvas construction
- Durable outer



Sydney Office
11/5 Hudson Ave
Castle Hill NSW 2154
Ph: 02 8850 2700



Melbourne Office
4/5 Kelleys Rd
Rowville VIC 3178
Ph: 03 9780 4850



CRESCENT BULLNOSE LINESMAN PLIERS

ATM-PTR-3800CHV

- Professional Series
- Insulated grips
- Precise Jaw for wire work
- Cross hatch jaws for positive grip
- Serrated pipe grip
- Size:200mm



IRWIN SPEEDBOR WOODBORING BIT

- 35mm cutting width
- Blue-Groove point and cutting edge cuts the wood up to 4X faster
- Double spurs for cleaner holes and reducing breakout



MILWAUKEE SHOCKWAVE LINEMANS 3 IN 1 UTILITY SOCKET

ATC-49665101

- 3 in 1 square design for single sided fastening
- The Push and Twist Barrel Lock allows for secure, one-handed size changes
- 7/16" to 1/2" Impact Adapter

WIRE BRUSH WITH SCRAPERS

ATM-TJQ0065

- Long lasting carbon steel wire bristles
- Heavy duty wooden handle for added comfort
- Narrow head for hard to reach area



DYMARK SPRAY & MARK

DYM-40013511

- Toluene-free formula
- High opacity, high quality, true colour pigment loading
- Applications include construction, landscaping, civil works and surveying
- Unique spray pattern specifically designed for spot marking as well as "writing" applications
- 12 in carton



DOW CORNING CLEAR SILICON

ATM-S732CL

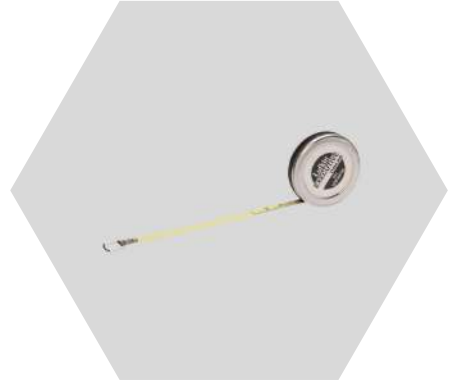
- General purpose sealant
- Paste consistency
- Bonding agent
- Space-filling rubber adhesive



LUFKIN TAPE MEASURE

ATM-W606PM

- Designed for Measuring Diameters of Pipe, Cable, Tire, and So On
- Double-sided blade print - simply turn the blade over for a conversion from diameter to circumference
- Durable metal case made from polished chrome
- Easy to read bold graduations
- Pocket sized for easy storage and transport
- Blade style: A20



METRIC 5M TAPE MEASURE

GRIPA06944

5 Metre in length
Solid construction

ROTARY DUAL-SCALE PITCH/ANGLE METER

ATM-SLT-100

- Quickly measure, verify or replicate surface pitch or angle
- Simple, one-hand operation with large thumb-screw positioned on handle
- Big, easy-to-read scales rotate and align using a large bubble vial
- Impact-resistant, heavy-gauge ABS case





ABN 44 071 568 771

"A-Z Product Solutions for Trade and Industry"

sales@all-trades.com.au

www.all-trades.com.au

ALL TRADES TOOL BAG

ATM-OTB006-SEC

FEATURES

- Canvas construction
- Rope Handle
- Custom Assembly



CUSTOM ASSEMBLY

ALL TRADES LINESMAN TOOL BUCKET

ATM-OTB-16OP-FP

- Ergonomic design
- Custom design
- Carries a multitude of different sized tools



Sydney Office
11/5 Hudson Ave
Castle Hill NSW 2154
Ph: 02 8850 2700



Melbourne Office
4/5 Kelleys Rd
Rowville VIC 3178
Ph: 03 9780 4850



ABN 44 071 568 771

"A-Z Product Solutions for Trade and Industry"

sales@all-trades.com.au

www.all-trades.com.au

CUSTOM ASSEMBLY

LINESMAN TWO POUCH DILLY BAG W/BELT

ATM-1322

DESCRIPTION

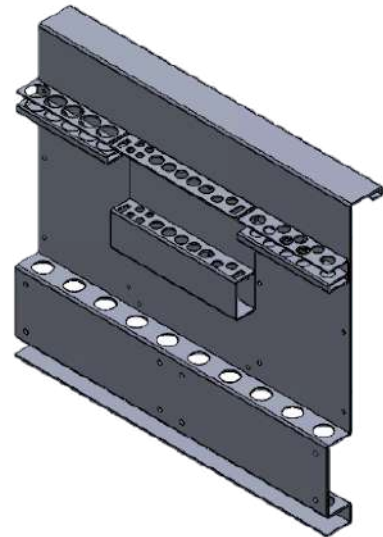
- Leather construction
- Durable
- Insulated



ALL TRADES HDPE TOOL BOARD

FEATURES

- Made to specification
- Custom Design
- Compartments for Tools & Storage
- Insulated
- Canvas Construction
- HDPE Backing



ALL TRADES LOAD TESTER CARRY BAG

ATM-LT240A15

FEATURES

- For use with our highly popular load tester
- Direct fit for load tester
- Canvas construction
- Durable outer



Sydney Office
11/5 Hudson Ave
Castle Hill NSW 2154
Ph: 02 8850 2700



Melbourne Office
4/5 Kelleys Rd
Rowville VIC 3178
Ph: 03 9780 4850



ABN 44 071 568 771

"A-Z Product Solutions for Trade and Industry"

sales@all-trades.com.au

www.all-trades.com.au

CUSTOM ASSEMBLY

ALL TRADES CABLE STRIPPER BUSHES

ATM-SB

DESCRIPTION

ALL TRADES MFG have developed stripping bushes to suit Australian Cable Specifications. These bushes are recommended for use in the Milwaukee M18 BCS Cable Stripping Tool.

FEATURES

- Sturdy Aluminium construction
- No exposed cutting blades
- Depth gauge for longer strip lengths if needed
- Extension bushes for sizes exceeding 280mm
- Precision CNC Machined
- Hands Free Operation



ORDER CODE: ATM-SB + (CONDUIT SIZE)



Sydney Office
11/5 Hudson Ave
Castle Hill NSW 2154
Ph: 02 8850 2700



Melbourne Office
4/5 Kelleys Rd
Rowville VIC 3178
Ph: 03 9780 4850



ABN 44 071 568 771

"A-Z Product Solutions for Trade and Industry"

sales@all-trades.com.au

www.all-trades.com.au

ALL TRADES DEPTH SET BLADES

ATM-BIM-TIN

DESCRIPTION

Modified high quality Multi Tool Blades

Makes open cutting into Electrical & Communication

Conduit Easy, Clean & SAFE

Blade affixed with a horse shoe shaped plate on each side

Horseshoe plates assist in controlling the depth being cut into the material (Conduit/Pipe etc.)

Starlock fitting for tool compatibility

ORDER CODE	CUTTING DEPTH	COLOUR
ATM-BIM-TIN-2	2mm	(Black)
ATM-BIM-TIN-3	3mm	(Grey)
ATM-BIM-TIN-4	4mm	(Gold)
ATM-BIM-TIN-5	5mm	(Yellow)
ATM-BIM-TIN-7	7mm	(White)
ATM-BIM-TIN-10	10mm	(Red)
ATM-BIM-TIN-10/15	10/15mm	(Silver)



CUSTOM ASSEMBLY



Sydney Office
11/5 Hudson Ave
Castle Hill NSW 2154
Ph: 02 8850 2700



Melbourne Office
4/5 Kelleys Rd
Rowville VIC 3178
Ph: 03 9780 4850



ABN 44 071 568 771

"A-Z Product Solutions for Trade and Industry"

sales@all-trades.com.au

www.all-trades.com.au

ALL TRADES TOOL APRON

ATM-1829-DP

FEATURES

- Ergonomic design
- Custom design
- Carries a multitude of different sized tools



CUSTOM ASSEMBLY

ALL TRADES LINER BRACKET

ATM-HDME1000-BL

FEATURES

- LINER BRACKET 95 X 15 X 25 - SUIT LIVE LINE EWP TOOL APRON
- * BRACKETS CAN BE MADE ACCORDING TO BASKET DIMENSIONS *



Sydney Office
11/5 Hudson Ave
Castle Hill NSW 2154
Ph: 02 8850 2700



Melbourne Office
4/5 Kelleys Rd
Rowville VIC 3178
Ph: 03 9780 4850

CLAMP BANDIT TOOL

TRI-CT1

- For tensioning and cutting of Steel strapping
- Features crank handle along with inbuilt cutting assembly to enable band style clamps or strapping to be tensioned and cut in during installation



BOLT CUTTER 24'/600MM

TRI-HITNBC0600H

- Recommended for heavy duty use
- Maximum hardness of material to be cut: Brinell 450, Rockwell C48, 162kg/mm² or 110 tonnes/square inch
- Durable jaws are forged from high tensile alloy steel that is specially heat treated and suitable for cutting hard materials



TECHNICIAN SAFETY KNIFE

TRITTK1

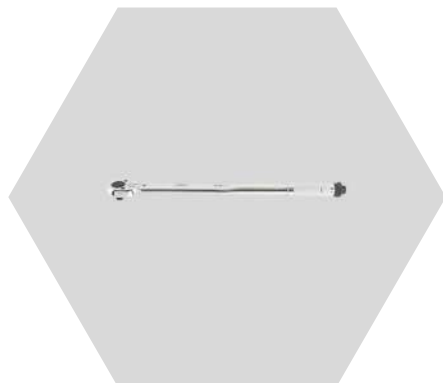
- Lock back blade
- Wooden Handle
- Rollover safety



SPANNER COMBINATION RING - 46MM

ATM-64646

- Forged from Heat Treated Chrome Vanadium Steel with Chrome plating which resists corrosion
- Double Mirror Polish Finish which easily wipes clean.
- 15° offset for better access in tight spaces
- Longer handle for improved reach & higher leverage



TORQUE WRENCH 1/2' SQUARE DRIVE

ATM-301099

- Click-stop design with heavy duty cam for superior strength and durability
- Suitable for single direction tightening right hand threads only (clockwise)
- Reversible thumb switch with 24 tooth ratchet head
- Micrometer style adjuster provides precise torque setting

BREAKER BAR 1/2' DR RATCHET HEAD

ATM-321250

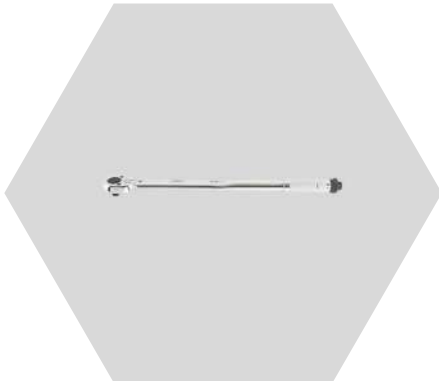
- Adjustable length high torque breaker bars provide greater flexibility and versatility
- Ratcheting head with high torque capabilities allows for use in heavier duty applications
- Telescopic handle: 410-610mm



SPANNER COMBINATION RING - 46MM

ATM-64646

- Forged from Heat Treated Chrome Vanadium Steel with Chrome plating which resists corrosion
- Double Mirror Polish Finish which easily wipes clean.
- 15° offset for better access in tight spaces
- Longer handle for improved reach & higher leverage



TORQUE WRENCH 1/2' SQUARE DRIVE

ATM-301099

- Click-stop design with heavy duty cam for superior strength and durability
- Suitable for single direction tightening right hand threads only (clockwise)
- Reversible thumb switch with 24 tooth ratchet head
- Micrometer style adjuster provides precise torque setting

BREAKER BAR 1/2' DR RATCHET HEAD

ATM-321250

- Adjustable length high torque breaker bars provide greater flexibility and versatility
- Ratcheting head with high torque capabilities allows for use in heavier duty applications
- Telescopic handle: 410-610mm





NICHOLSON 200MM TAPER FILE

ATM-914291AU

- Strips Semi-con layer from insulation
- Tapered Design
- 200mm
- Triangular



CRESCENT TORPEDO LEVEL 200MM X 90MM

ATM-PTM520

- Magnetic Torpedo Level 200mm x 90mm
- 3 Vial - Horizontal, Vertical & 45 Degree
- Magnetic Measuring Surface
- Multipurpose Level for Everyday Use
- 13-42mm



SPLIT BOLT SPANNER (B26 & B28)

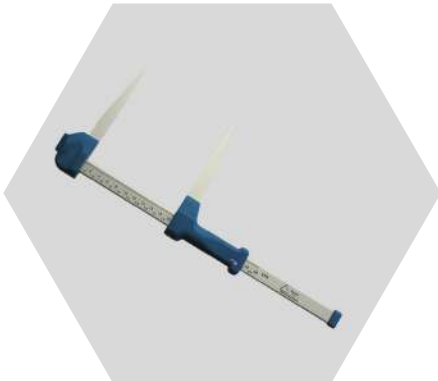
HAY-HLTS/2

- 4 ended for type A,B,C and D connectors
- 17.9mm (A connector)
- 23.2mm (B connector)
- 27.7mm (C connector)
- 27.7mm (D connector)
- 165 g weight

250MM/10' SHIFTER

ATM-AT210VS

- The original adjustable wrench, made by the world-famous Crescent® brand
- Laser etched scale in both SAE and metric sizes allows easy fastener size identification
- Larger knurl provides a tighter jaw fit, is easier to adjust and is less likely to bind up



HAGLOF PRECISION CALIPERS

ATM-942

- Injected moulded aluminium jaws
- Light weight adjustable jaws
- Large and visible figures for long lasting use
- Non-reflective aluminium beam

POLE CALIPERS (600MM)

ATM-HBPC

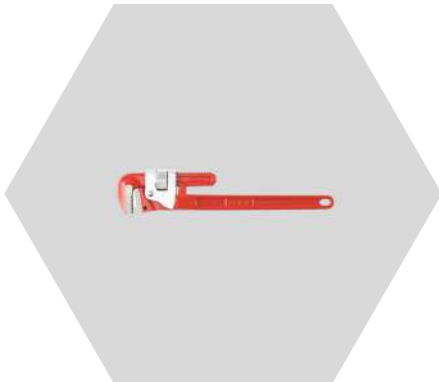
- Designed to provide accurate diameter measurements on poles up to 600mm. This is specifically valuable in the maintenance program for timber power poles.



ADJUSTABLE SHIFTER 18'

ATM-PA17196

- Drop Forged
- Heat treated
- Chrome plated
- Ergonomic Grip
- Non slip grip



STILLSON PIPE WRENCH

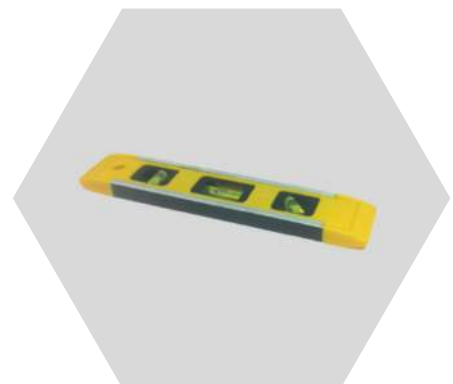
ATM-HITPU450

- Hi-Vis Orange for visual identification
- Manufactured from drop forged steel with alloy steel body with chrome jaws
- Floating forged steel jaws allow for fast ratcheting action
- Heat treated for extra strength and durability
- High quality soft ear cushions for all day comfort

300MM SPIRIT LEVEL

GRIPTW90210

- 300mm Length
- Easily identifiable
- 3 Bubbles for all orientations





18' SHIFTER 450MM

ATM-88450

- Metric graduation markings on jaw
- Non-protruding jaw shank to allow access in tight spaces
- Parallel jaws ensure superior grip of bolts and fasteners
- Features a four thread knurl offering smooth, uninhibited opening and closing of jaws

RATCHET SPANNER 24MM COMBINATION

ATM-9624N

- 72 tooth ratcheting box end needs a minimal 5° to move fasteners vs. 30° for standard wrenches
- Flush mounted reversing lever allows you to change direction without removing the wrench
- Off-corner loading design on box end provides better grip and reduces fastener rounding
- Pass-thru® technology works down any length of threaded rod and long bolts



STANLEY COMBO PLIERS

ATM-84-002-S

- Bi-material handle with secure grip grooving
- For gripping & cutting applications
- Hand ground, induction hardened blade for long life
- Heat treated high chrome steel forging for long life and durability





STANLEY ADJUSTABLE WRENCH

ATM-90-***

- Narrow head design for limited space applications
- Laser-marked SAE and metric jaw scale for easy fastener size
- Forged alloy-steel body increases strength and exceeds ANSI standards for torque
- Extra-wide jaw capacity opens wider than standard adjustable wrenches
- Bi-material handle for a comfortable grip
- Used for automotive maintenance and repair, plumbing and general assembly tasks



CABAC HOLESAW KIT 16-76MM

ATM-HSKIT1

- Drill bit hole saw kit
- Bi metal
- 16-76mm size range

ADJUSTABLE SHIFTER 18'

ATM-PA17196

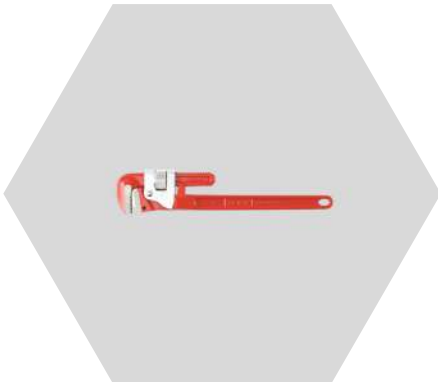
- Drop Forged
- Heat treated
- Chrome plated
- Ergonomic Grip
- Non slip grip



STILLSON PIPE WRENCH

ATM-HITPU450

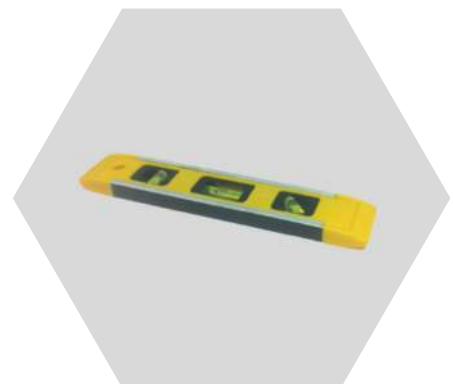
- Hi-Vis Orange for visual identification
- Manufactured from drop forged steel with alloy steel body with chrome jaws
- Floating forged steel jaws allow for fast ratcheting action
- Heat treated for extra strength and durability
- High quality soft ear cushions for all day comfort



300MM SPIRIT LEVEL

GRIPTW90210

- 300mm Length
- Easily identifiable
- 3 Bubbles for all orientations





IRWIN DOVETAIL PULL SAW

IRW-213104

- Use this dovetail saw for interior trim work and detailed work around windows
- The flexible blade on this pull saw is also great for flush cuts on dowels



ALL TRADES SEMI CONDUCTOR STRIPPER

ATM-HSCS1342

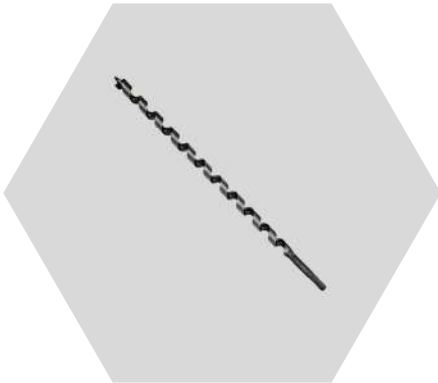
- Strips Semi-con layer from insulation
- 13-42mm



CABLEMATIC TORQUE WRENCH

PHIC169.2

- Suits RG11 F Connectors
- 9/16" Head



LONG SHIP AUGER BIT

ATM-STM8013**ATM STM-8016**

- Hardened & tempered cutting edges
- Precision machined construction
- Fast, smooth boring
- Made in Japan
- 13 & 16mm Sizes Available

12PT COMBINATION SPANNER

TEC-64646

- 64646 "Greater Surface Contact" on the Flats of the Hex, Away from the Corners gives a more Positive Non-slip, Non-burr Grip with Increased Torque and Strength
- Features: Forged From 6140 Alloy Steel
- Ring End Features Double Hex
- Satin Chrome Finish with Polished Heads



AXE HATCHET STEEL SHAFT - HART - 200Z

ATM-603693

- Engineered to split Australian hardwood
- Designed for maximum blade life
- SureGrip™ handle for maximum control and comfort



MILWAUKEE 18PCE SHOCKWAVE IMPACT DRIVER BIT SET

ATC-48324403

- 3 x Phillips Bit 25mm: P1, P2 & P3
- 2 x Slotted Bit 25mm: SL 1/4", SL 3/16"
- 2 x Square Bit 25mm: SQ1, SQ2
- 3 x Phillips Bit 50mm: 2 x P2, P3
- 3 x Square Bit 50mm: 2 x SQ2, SQ3
- 2 x TORX Bit 50mm T15, T20
- 1 x 3 1/2" Phillips #2
- 1 x 3 1/2" Square Drive #2
- 1 x Case with Bulk Storage Container
- 1 x SHOCKWAVE Magnetic Bit Holder



SCREWDRIVER SET (8P)

ATM-SD8SET

- Working Capacity of 1000v
- 8 pieces included, with all sizes needed for any job



DURATOOL 30P HEX KEY SET

ATM-2773618

- 0.7mm, 0.9mm, 1.3mm, 1.5mm, 2mm, 2.5mm, 3mm, 4mm, 4.5mm, 5mm, 5.5mm, 6mm, 7mm, 8mm, 10mm, Imperial: 1/36", 1/28", 1/20", 1/16", 5/64", 3/32", 7/64", 1/8", 9/64", 5/32", 3/16", 7/32", 1/4", 5/16" & 3/8"
- Hex Keys in a Moulded Case
- Jaw mechanism provides 3X more gripping power
- 2x Longer life: High grade alloy steel is heat treated for maximum toughness and durability

BUCKET W/ LID (5L)

ATM-VP5C

- Leak proof seal
- Food grade
- Unique lifting lug
- Made in Australia



BLACK ELECTRICAL PVC TAPE

AMP-PVCT-BK

- Electrical Tape
- PVC
- 18mm x 20m
- Extremely flexible and conformable PVC backing.
- Ideal for cable and wire insulation.
- **BLACK COLOUR**



BLACK DUCT TAPE

STY550/13BK

- 48mm x 30mtr
- Lead Free
- 130um
- 60 rolls per carton



BUCKET W/ LID (5L)

ATM-VP5C

- Leak proof seal
- Food grade
- Unique lifting lug
- Made in Australia



BLACK ELECTRICAL PVC TAPE



-
-
-
-
-
-

Extremely flexible and conformable PVC backing.
Ideal for cable and wire insulation.

AMP-PVCT-BK

Electrical Tape

PVC

18mm x 20m

BLACK COLOUR

BLACK COLOUR

BLACK DUCT TAPE

STY550/13BK

- 48mm x 30mtr
- Lead Free
- 130um
- 60 rolls per carton





STANLEY BOX FRAME HACKSAW

ATM-STHT20140

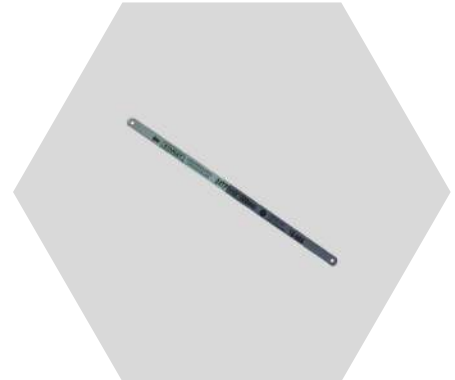
-
-
-
-

Bi-material handle for comfort
45° and 90° adjustable blade angle
Robust box beam metal frame
Storage for up to 8 blades

STANLEY HACKSAW BLADE

ATM-15-836-S

- High speed steel blades cut most metals including unhardened tool steel and stainless steel



AUTO-RETRACT SAFETY KNIFE

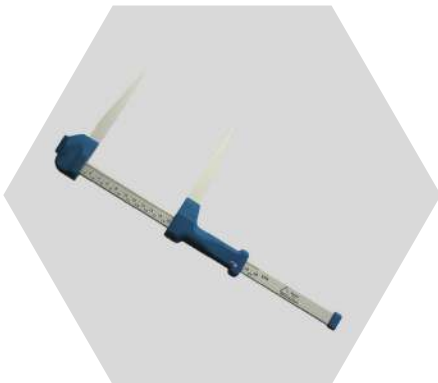
ATM-WKAR2

- Blade Retracts Automatically the Moment it Loses Contact with the Material Being Cut - Even if the User is Still Holding the Blade Slider Forward in the 'Open' Position
- Helps Reduce Workplace Injuries, Lowering Lost Time and Increasing Productivity

250MM/10' SHIFTER

ATM-AT210VS

- The original adjustable wrench, made by the world-famous Crescent® brand
- Laser etched scale in both SAE and metric sizes allows easy fastener size identification
- Larger knurl provides a tighter jaw fit, is easier to adjust and is less likely to bind up



HAGLOF PRECISION CALIPERS

ATM-942

- Injected moulded aluminium jaws
- Light weight adjustable jaws
- Large and visible figures for long lasting use
- Non-reflective aluminium beam

POLE CALIPERS (600MM)

ATM-HBPC

- Designed to provide accurate diameter measurements on poles up to 600mm. This is specifically valuable in the maintenance program for timber power poles.





CABAC HAND HELD CRIMPER (<25MM²)

CABK28

- Hand Held
- 6-25mm² Capacity
- Copper Lugs
- Crimp Type = 'W'



10-1000V DUAL RANGE VOLTAGE DETECTOR (TOOL ONLY)

ATC-2203-20

- Automatically differentiates 10-49V and 50-1000V.
- Different colours identify voltage range.
- Built-in LED work light.
- Auto-off.
- AAA Battery Included

IRWIN VISE GRIPS

ATM-T11T



- Provides comfort, control and less hand fatigue
- Jaw mechanism provides 3X more gripping power
- 2x Longer life: High grade alloy steel is heat treated for maximum toughness and durability



RATCHET WRENCH QUADBOX

ATM-59208

- 5/16" x 3/8"
- 7/16" & 1/2"



WIHA 3/16" NUT DRIVER

ATM-1229854

- Chrome blade
- Hard Chrome Finished



STANLEY FLAT BLADE SCREWDRIVER

ATM-65-554

- 10mm x 300mm



T&E TOOLS HEX-KEY SET (9P)

TEC-6809

- Keys will turn up to 25° angle.
- Made from S2 steel and are precision heat treated for maximum performance.
- Meets ANSI B18.3 industry standards. Retained in a friction ring holder for secure retention.
- 1.5mm, 2mm, 2.5mm, 3mm, 4mm, 5mm, 6mm, 8mm, 10mm.



MILWAUKEE SABRE SAW BLADE

ATC-48005784

- Optimized tooth design providing 2X more life than our previous generation SAWZALL® blades
- Tough Neck™ ribs strengthen the blade tang and minimize breakage
- Grid Iron™ honeycomb pattern increases blade rigidity to resist blade buckling.
- 18 TEETH PER INCH
- Length: 150mm

BUCKET W/ LID (5L)

ATM-VP5C

- Leak proof seal
- Food grade
- Unique lifting lug
- Made in Australia



BLACK ELECTRICAL PVC TAPE

AMP-PVCT-BK

- Electrical Tape
- PVC
- 18mm x 20m
- Extremely flexible and conformable PVC backing.
- Ideal for cable and wire insulation.
- **BLACK COLOUR**



BLACK DUCT TAPE

STY550/13BK

- 48mm x 30mtr
- Lead Free
- 130um
- 60 rolls per carton





CRESCENT BULLNOSE LINESMAN PLIERS

ATM-PTR-3800CHV

- Professional Series
- Insulated grips
- Precise Jaw for wire work
- Cross hatch jaws for positive grip
- Serrated pipe grip
- Size:200mm



IRWIN SPEEDBOR WOODBORING BIT

- 35mm cutting width
- Blue-Groove point and cutting edge cuts the wood up to 4X faster
- Double spurs for cleaner holes and reducing breakout



MILWAUKEE SHOCKWAVE LINEMANS 3 IN 1 UTILITY SOCKET

ATC-49665101

- 3 in 1 square design for single sided fastening
- The Push and Twist Barrel Lock allows for secure, one-handed size changes
- 7/16" to 1/2" Impact Adapter



IRWIN DOVETAIL PULL SAW

IRW-213104

- Use this dovetail saw for interior trim work and detailed work around windows
- The flexible blade on this pull saw is also great for flush cuts on dowels



ALL TRADES SEMI CONDUCTOR STRIPPER

ATM-HSCS1342

- Strips Semi-con layer from insulation
- 13-42mm



CABLEMATIC TORQUE WRENCH

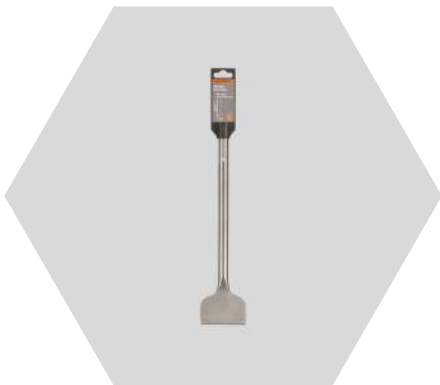
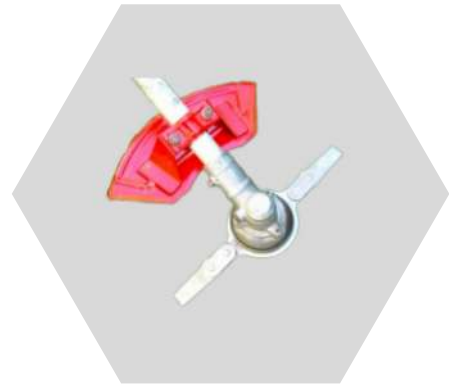
PHIC169.2

- Suits RG11 F Connectors
- 9/16" Head

HEAVY DUTY WEED WAKKA

ATM-WWK-HD

- Ideal for clearing everything from fine grass to tussock, blackberry, lantana and tree saplings up to thumb thickness
- Double articulated blades reduce kickback if solid object is hit



CHISEL BIT SDS MAX

ATM-2390240

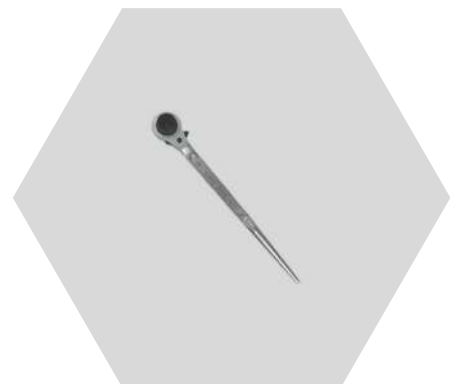
-
-
-

Made from durable steel
Great for light demolition tasks
Suits any brand of SDS Max tools

PODGER RATCHET

ATM-RRP2430

- ATM-RRP2430 - PODGER RATCHET "KING DICK" - 24 X 30MM
- Precisely machined
- Heat-treated
- Zinc plated
- High quality steel



CLAMP BANDIT TOOL

TRI-CT1

- For tensioning and cutting of Steel strapping
- Features crank handle along with inbuilt cutting assembly to enable band style clamps or strapping to be tensioned and cut in during installation



BOLT CUTTER 24"/600MM

TRI-HITNBC0600H

- Recommended for heavy duty use
- Maximum hardness of material to be cut: Brinell 450, Rockwell C48, 162kg/mm² or 110 tonnes/square inch
- Durable jaws are forged from high tensile alloy steel that is specially heat treated and suitable for cutting hard materials



TECHNICIAN SAFETY KNIFE

TRITTK1

- Lock back blade
- Wooden Handle
- Rollover safety





18' SHIFTER 450MM

ATM-88450

- Metric graduation markings on jaw
- Non-protruding jaw shank to allow access in tight spaces
- Parallel jaws ensure superior grip of bolts and fasteners
- Features a four thread knurl offering smooth, uninhibited opening and closing of jaws

RATCHET SPANNER 24MM COMBINATION

ATM-9624N

- 72 tooth ratcheting box end needs a minimal 5° to move fasteners vs. 30° for standard wrenches
- Flush mounted reversing lever allows you to change direction without removing the wrench
- Off-corner loading design on box end provides better grip and reduces fastener rounding
- Pass-thru® technology works down any length of threaded rod and long bolts



STANLEY COMBO PLIERS

ATM-84-002-S

- Bi-material handle with secure grip grooving
- For gripping & cutting applications
- Hand ground, induction hardened blade for long life
- Heat treated high chrome steel forging for long life and durability





CRESCENT CONDUIT CUTTER

ATM-CCC42

- Heat treated cutting blade for cutting P.V.C. pipe and water hose up to 42mm diameter.
- Cuts cleanly without the need for de-burring.
- Heavy duty design and construction.
- Bright red colour for easy standout in the tool box and workplace.
- Jaw insert enables the cutting of additional profiles, including square profiles



MILWAUKEE JOBSITE STRAIGHT SCISSORS

ATC-48224044

- Iron Carbide Edge Blades
- Micro-Serrated Blades for Grip While Cutting
- Bolt Lock Technology
- Rust Protection



29 X 460MM SHOCKWAVE POWER UTILITY AUGER

ATC-48136769

- Single Spur Design
- Reinforced Anti-Friction PTFE Coating



STANLEY INSULATED SCREWDRIVER

ATM-65-***

- Chrome vanadium blades heat treated to max torque.
- Each screwdriver individually tested to 1000V Hardness and torque values exceed ISO/DIN standards.
- Ergonomic grip for comfort and greater torque application



CRESCENT CABLE RATCHET CUTTER

KUD-RCC-300

- Cuts up to 300mm² diameter cable
- Both copper and aluminium cable capabilities



IRWIN MASONRY DRILL BIT SET

ATM-10501893

- Straight shank rotary percussion
- Diamond-ground carbide tip
- Chrome vanadium body with high carbon content
- Fast and efficient drilling
- Single flute design



CRESCENT 542-8CVN 200MM DIAGONAL CUTTING PLIERS

ATM-605222601

- Designed for Heavy-Duty Wire Cutting
- Electronically Induction Hardened Hand-Honed, Long Lasting Cutting Edges
- Made of Forged Alloy Tool Steel
- Individually Tested for Strength and Cutting Ability
- Polished Head



IRWIN LONG NOSE PLIERS

ATM-10505869NA

- Triple layer handle
- Strong gripping teeth
- Induction hardened cutting edge stays sharper longer
- Slim profile nose
- 1000v Insulated



NICHOLSON 200MM TAPER FILE

ATM-914291AU

- Strips Semi-con layer from insulation
- Tapered Design
- 200mm
- Triangular



CRESCENT TORPEDO LEVEL 200MM X 90MM

ATM-PTM520

- Magnetic Torpedo Level 200mm x 90mm
- 3 Vial - Horizontal, Vertical & 45 Degree
- Magnetic Measuring Surface
- Multipurpose Level for Everyday Use
- 13-42mm



SPLIT BOLT SPANNER (B26 & B28)

HAY-HLTS/2

- 4 ended for type A,B,C and D connectors
- 17.9mm (A connector)
- 23.2mm (B connector)
- 27.7mm (C connector)
- 27.7mm (D connector)
- 165 g weight



DISMANTLING KNIFE (HOOK SHAPE)

TRI-9855155

- 1000v working capacity
- Hook Shape
- Guide Shoe
- Protection Cap



REPELEC FLINT GUN

REP-308789

- No Gas Required
- Easy spark creation



TOLEDO MASTER BIT SET

TRI301447

- Compact bit set with a variety of popular screw head combinations including Slotted, Phillips, Pozidriv, Torx, Tamper Proof Torx and Hex
- Includes 1/4" square drive bit holder
- For the removal and installation of screws, bolts and fittings, ideal for use with power screwdrivers or drills

DURACELL BATTERY (AA)

DUR-MN1500

- High performance, long lasting Duracell AA batteries
- Economical bulk packaging
- Ideal for demanding, high drain applications
- 24 PACK



9V PROCELL BATTERY

DUR-PX1604-12

- High performance, long lasting Duracell AA cell batteries.
- Economical bulk packaging.
- Alkaline copper top, mercury free.
- Ideal for demanding, high drain applications.

AAA DURACELL BATTERIES

DUR-MN2400

- High performance, long lasting Duracell AAA batteries.
- Economical bulk packaging.
- Alkaline copper top, mercury free.
- Ideal for demanding, high drain applications.
- 24 pack



WIRE BRUSH WITH SCRAPERS

ATM-TJQ0065

- Long lasting carbon steel wire bristles
- Heavy duty wooden handle for added comfort
- Narrow head for hard to reach area



DYMARK SPRAY & MARK

DYM-40013511

- Toluene-free formula
- High opacity, high quality, true colour pigment loading
- Applications include construction, landscaping, civil works and surveying
- Unique spray pattern specifically designed for spot marking as well as "writing" applications
- 12 in carton



DOW CORNING CLEAR SILICON

ATM-S732CL

- General purpose sealant
- Paste consistency
- Bonding agent
- Space-filling rubber adhesive





STANLEY FATMAX 600MM BOX LEVEL

ATM-0-42-074

- Bi-material hand grips are screwed into the frame.
- Solid block vials provide best in class accuracy in 8 orientations of +/-0.05mm/m.
- Vials magnified by 20% for improved all round visibility.
- Dual machined levelling surfaces for maximum accuracy.
- Rock solid box beam construction is up to 5 times stronger than other Stanley levels.



STANLEY 32MM CHISEL

ATM-0-16-263

- Ergonomic soft grip CAB handle for comfort and control
- Ergonomic soft grip handle – for maximum grip and control
- Full length blade guard – for added safety
- Quality chrome alloy (ball bearing grade) steel – provides superior edge retention. Lacquered blade for corrosion protection



MILWAUKEE WIDE JAW ADJUSTABLE WRENCH

ATC-48227508

- Wide-jaw design for increased jaw capacity in confined environments
- Proprietary Adjustment Screw - Jaws Won't Back off



T&E TOOLS FINE FLUSH CUT SIDE NIPPERS

ATM-PT0302

- Fine blade flush cutting pliers for electronic work
- Cushion-grip handles
- Made from drop forged alloy steel, polish finished head



NICHOLSON 300MM FLAT FILE

ATM-903765AU

- 300mm
- Flat File
- Bastard Cut



WISS STRAIGHT CUT AVIATION SNIP

ATM-M3RAU

- Cuts straight, left or right in light stock
- Non-slip serrated jaws are made of wear-resistant molybdenum steel
- Provides extra service demanded by the compound lever action
- Self-opening action for fast, effortless feed
- Vibrant yellow handles for easy identification



TRADEFLAME 35MM BRASS BURNER

PRI-215045

- This Windproof 35mm Burner is part of the TradeFlame Professional range and has been designed as a heavy duty yet lightweight burner, for use with all TradeFlame Professional necktubes. Ideal for brazing, soldering and heating.
 - Heavy Duty and Lightweight
 - Windproof Burner
 - Brass

MISC.



DY-MARK ZINC STENCIL SET

ATM-04047506

- No Sharp Edges
- Robust Construction



FLAG FFL 12MM

ATM-T11T

- Handheld PVC flag with wooden handle
- Size: 300mm x 300mm



DISMANTLING KNIFE (HOOK SHAPE)

TRI-9855155

- 1000v working capacity
- Hook Shape
- Guide Shoe
- Protection Cap



REPELEC FLINT GUN

REP-308789

- No Gas Required
- Easy spark creation



TOLEDO MASTER BIT SET

TRI301447

- Compact bit set with a variety of popular screw head combinations including Slotted, Phillips, Pozidriv, Torx, Tamper Proof Torx and Hex
- Includes 1/4" square drive bit holder
- For the removal and installation of screws, bolts and fittings, ideal for use with power screwdrivers or drills



GEARWRENCH NUT DRIVER SET W/RATCHET HANDLE

ATM-8196D

- Color-coded stripe for easy identification, and clearly etched sizes that allow you to select the right tool the first time
- Full polished chrome finish is corrosion resistant for long-lasting durability
- Precision, fine-tooth, reversible ratcheting mechanism in the handle allows for ease of use and faster job completion

KLEIN RATCHET CUTTER

ATM-63607



- Reduced hand force for easier cutting
- Patented two-step ratchet mechanism requires fewer strokes per cut
- Cuts up to 336 MCM ACSR, 400 MCM Copper and 600 MCM Aluminum
- Quick release lever opens blades easily in every cutting position, to allow removal of the cable before completion of cut

SPEAR & JACKSON HACKING KNIFE



ATM-SJHK115

- Hacking Knife
- 4 1/2"
- Rosewood Handle
- Multi-Purpose

STANLEY 37P SOCKET SET

ATM-89-518

- A/F Sockets: 3/16, 7/32, 1/4, 9/32, 5/16, 11/32, 3/8, 7/16, 1/2"
- Metric Sockets: 4, 5, 6, 7, 8, 10, 11, 12mm
- Metric Sockets: 8, 10, 11, 12, 13, 14, 16, 17, 19mm
- Socket Accessories: Socket Driver 3/8" Drive Sockets & Accessories





MILWAUKEE FASTBACK™ FOLDING UTILITY KNIFE

ATC-48221502

- Press and Flip Opening
- 4 blade storage
- All metal body
- Quick blade change
- Gut hook



CUSTOM CONDUIT CLEANER

- Custom Assembly
- PVC Outer
-



CRESCENT 2PC MICRO CUTTER AND PLIER SET

ATM-S2KS5N

- Micro Cutter and Plier Set
- Mini Plier: 102mm/4" ~ Tighter grip less slip
- Wire Cutter: 102mm/4" ~ Low profile flush cut



GALVANISED SCREW HOOK

ATM424/59

- 12mm x 65mm (also comes in 16mm x 65mm ATM424/61)
- Coach screw thread
- 130mm overall length

ALL TRADES PILLAR SPANNER



VAN-PS

- Comes with 21mm & 26mm swivel socket attachment

NGK SOCKET RATCHET



HES-NGKBY3

- 4 Way
- Suits 17, 19, 24, 30mm A/F Nuts



T&E TOOLS FINE FLUSH CUT SIDE NIPPERS

ATM-PT0302

- Fine blade flush cutting pliers for electronic work
- Cushion-grip handles
- Made from drop forged alloy steel, polish finished head



NICHOLSON 300MM FLAT FILE

ATM-903765AU

- 300mm
- Flat File
- Bastard Cut



WISS STRAIGHT CUT AVIATION SNIP

ATM-M3RAU

- Cuts straight, left or right in light stock
- Non-slip serrated jaws are made of wear-resistant molybdenum steel
- Provides extra service demanded by the compound lever action
- Self-opening action for fast, effortless feed
- Vibrant yellow handles for easy identification

METRINCH IMPACT SOCKET SET 1/2" DRIVE

TRI-MET2450



- C/W- 15 SOCKETS. 11MM (7/16") 12MM (15/32) 13MM (1/2") 14MM (9/16) 15MM (19/32") 16MM (5/8") 17MM (11/16") 18MM (23/32") 19MM (3/4") 20MM (25.32") 21MM (13/16") 22MM (7/8") 23MM (29.32") 24MM (15/16") AND 25MM (1")

MILWAUKEE PARROT BEAK CUTTER

ATM-0890CSJ



- 70mm² CU/AL
- Comfort grips
- High-leverage jaws with shear-cut blades
- Designed with an optimized blade angle that will remain sharp when cutting through copper and aluminum cable

PEAR HEAD RATCHET (3/4' DRIVE)

TEC-25550

- 3/4' Drive
- Heavy Duty



NUT DRIVER - 3/8'

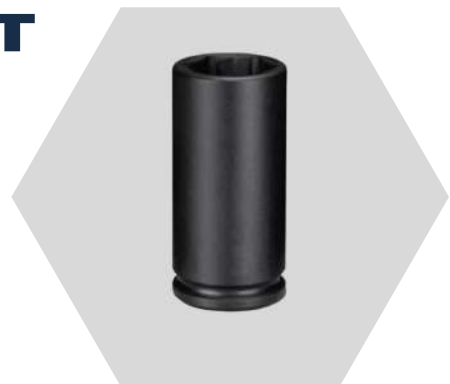
TEC-5793

- NUT DRIVER - 3/8" - 1/4" HEX DRIVE X 45 MM LONG

DEEP SOCKET IMPACT

ATM-60522024

- Socket Size: 24mm
- Drive Size: 1/2"
- Length (L): 78mm
- L2: 24mm
- D1: 35mm
- D2: 30mm
- Weight: 0.32kg





GALVANISED SCREW HOOK

ATM424/59

- 12mm x 65mm (also comes in 16mm x 65mm ATM424/61)
- Coach screw thread
- 130mm overall length

ALL TRADES PILLAR SPANNER



VAN-PS

- Comes with 21mm & 26mm swivel socket attachment

NGK SOCKET RATCHET



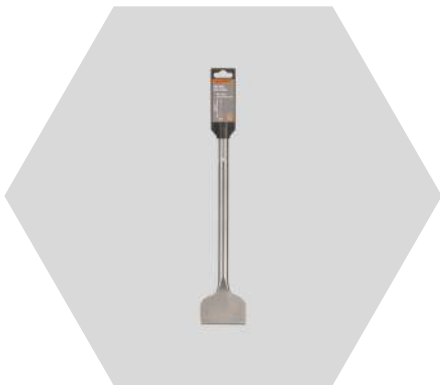
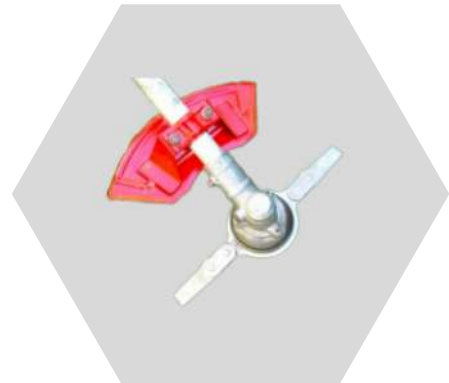
HES-NGKBY3

- 4 Way
- Suits 17, 19, 24, 30mm A/F Nuts

HEAVY DUTY WEED WAKKA

ATM-WWK-HD

- Ideal for clearing everything from fine grass to tussock, blackberry, lantana and tree saplings up to thumb thickness
- Double articulated blades reduce kickback if solid object is hit



CHISEL BIT SDS MAX

ATM-2390240

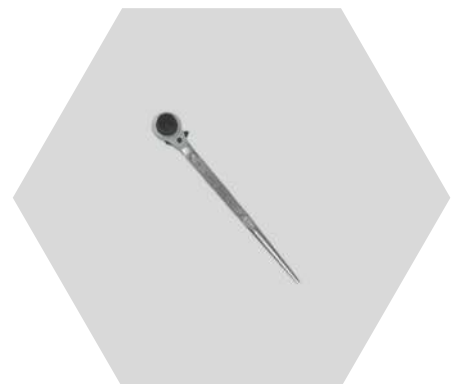
-
-
-

Made from durable steel
Great for light demolition tasks
Suits any brand of SDS Max tools

PODGER RATCHET

ATM-RRP2430

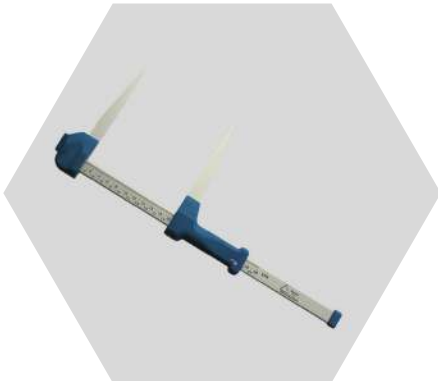
- ATM-RRP2430 - PODGER RATCHET "KING DICK" - 24 X 30MM
- Precisely machined
- Heat-treated
- Zinc plated
- High quality steel



250MM/10' SHIFTER

ATM-AT210VS

- The original adjustable wrench, made by the world-famous Crescent® brand
- Laser etched scale in both SAE and metric sizes allows easy fastener size identification
- Larger knurl provides a tighter jaw fit, is easier to adjust and is less likely to bind up



HAGLOF PRECISION CALIPERS

ATM-942

- Injected moulded aluminium jaws
- Light weight adjustable jaws
- Large and visible figures for long lasting use
- Non-reflective aluminium beam

POLE CALIPERS (600MM)

ATM-HBPC

- Designed to provide accurate diameter measurements on poles up to 600mm. This is specifically valuable in the maintenance program for timber power poles.



IRODA PT-500 GAS TORCH

DESCRIPTION

Iroda PT-500 provides powerful and easily controllable flame output for a range of applications where varying BTU output is required

This torch is suitable for the DIY enthusiast or hobbyist for use around the home or small workshop.

FEATURES

- Non-Stop 40 Minutes Use on Each Filling
- Water Resistant Piezo Electronic Ignition System
- Precision Flame Control (Adjustable Airflow)
- Sturdy Heavy-duty Ribbed Aluminum Body
- Air flow Control Valve
- Wind Resistant Flame
- Precision Flame Control

The Iroda logo, featuring a red dot above the letter 'i' in the word "iroda".



RATCHET WRENCH QUADBOX

ATM-59208

- 5/16" x 3/8"
- 7/16" & 1/2"



WIHA 3/16" NUT DRIVER

ATM-1229854

- Chrome blade
- Hard Chrome Finished



STANLEY FLAT BLADE SCREWDRIVER

ATM-65-554

- 10mm x 300mm



RATCHET SPANNER (13 & 17MM)

ATM-RPS1317-S

- 6 point
- Dual Size



T&E TOOLS NUT DRIVER

ATM-11-800L

- 10x Sharper, Longer
- 50 Blades Included
- Carbide Construction



18' SHIFTER 450MM

ATM-88450

- Metric graduation markings on jaw
- Non-protruding jaw shank to allow access in tight spaces
- Parallel jaws ensure superior grip of bolts and fasteners
- Features a four thread knurl offering smooth, uninhibited opening and closing of jaws

RATCHET SPANNER 24MM COMBINATION

ATM-9624N

- 72 tooth ratcheting box end needs a minimal 5° to move fasteners vs. 30° for standard wrenches
- Flush mounted reversing lever allows you to change direction without removing the wrench
- Off-corner loading design on box end provides better grip and reduces fastener rounding
- Pass-thru® technology works down any length of threaded rod and long bolts



STANLEY COMBO PLIERS

ATM-84-002-S

- Bi-material handle with secure grip grooving
- For gripping & cutting applications
- Hand ground, induction hardened blade for long life
- Heat treated high chrome steel forging for long life and durability





T&E TOOLS HEX-KEY SET (9P)

TEC-6809

- Keys will turn up to 25° angle.
- Made from S2 steel and are precision heat treated for maximum performance.
- Meets ANSI B18.3 industry standards. Retained in a friction ring holder for secure retention.
- 1.5mm, 2mm, 2.5mm, 3mm, 4mm, 5mm, 6mm, 8mm, 10mm.



MILWAUKEE SABRE SAW BLADE

ATC-48005784

- Optimized tooth design providing 2X more life than our previous generation SAWZALL® blades
- Tough Neck™ ribs strengthen the blade tang and minimize breakage
- Grid Iron™ honeycomb pattern increases blade rigidity to resist blade buckling.
- 18 TEETH PER INCH
- Length: 150mm



98KN EYE BOLT

- 98kN minimum failing load
- Forged to comply with AS1111.1
- Material Grades to AS1442 and AS3679.1
- Galvanised to AS1214
- M20 hex nut to AS1112.3



INSULATED REVERSIBLE RATCHET

ATM-MS85

- 1000v Insulated Reversible Ratchet
- 3/8" Drive
- Mechanical Locking
- To facilitate the tightening of connectors on overhead or underground service lines



TIE WIRE

WHI-50415

- Coated with protective PVC this is a very flexible and handy tie wire.
- Available in 15m or 50m coils



STANLEY INSULATED SCREWDRIVER

ATM-65-***

- Chrome vanadium blades heat treated to max torque.
- Each screwdriver individually tested to 1000V Hardness and torque values exceed ISO/DIN standards.
- Ergonomic grip for comfort and greater torque application



CRESCENT CABLE RATCHET CUTTER

KUD-RCC-300

- Cuts up to 300mm² diameter cable
- Both copper and aluminium cable capabilities



IRWIN MASONRY DRILL BIT SET

ATM-10501893

- Straight shank rotary percussion
- Diamond-ground carbide tip
- Chrome vanadium body with high carbon content
- Fast and efficient drilling
- Single flute design



IRWIN DOVETAIL PULL SAW

IRW-213104

- Use this dovetail saw for interior trim work and detailed work around windows
- The flexible blade on this pull saw is also great for flush cuts on dowels



ALL TRADES SEMI CONDUCTOR STRIPPER

ATM-HSCS1342

- Strips Semi-con layer from insulation
- 13-42mm



CABLEMATIC TORQUE WRENCH

PHIC169.2

- Suits RG11 F Connectors
- 9/16" Head



CRESCENT 542-8CVN 200MM DIAGONAL CUTTING PLIERS

ATM-605222601

- Designed for Heavy-Duty Wire Cutting
- Electronically Induction Hardened Hand-Honed, Long Lasting Cutting Edges
- Made of Forged Alloy Tool Steel
- Individually Tested for Strength and Cutting Ability
- Polished Head



IRWIN LONG NOSE PLIERS

ATM-10505869NA

- Triple layer handle
- Strong gripping teeth
- Induction hardened cutting edge stays sharper longer
- Slim profile nose
- 1000v Insulated



STANLEY INSULATED SCREWDRIVER

ATM-65-***

- Chrome vanadium blades heat treated to max torque.
- Each screwdriver individually tested to 1000V Hardness and torque values exceed ISO/DIN standards.
- Ergonomic grip for comfort and greater torque application



CRESCENT CABLE RATCHET CUTTER

KUD-RCC-300

- Cuts up to 300mm² diameter cable
- Both copper and aluminium cable capabilities



IRWIN MASONRY DRILL BIT SET

ATM-10501893

- Straight shank rotary percussion
- Diamond-ground carbide tip
- Chrome vanadium body with high carbon content
- Fast and efficient drilling
- Single flute design



CABAC HAND HELD CRIMPER (<25MM²)

CABK28

- Hand Held
- 6-25mm² Capacity
- Copper Lugs
- Crimp Type = 'W'



10-1000V DUAL RANGE VOLTAGE DETECTOR (TOOL ONLY)

ATC-2203-20

- Automatically differentiates 10-49V and 50-1000V.
- Different colours identify voltage range.
- Built-in LED work light.
- Auto-off.
- AAA Battery Included

IRWIN VISE GRIPS

ATM-T11T



- Provides comfort, control and less hand fatigue
- Jaw mechanism provides 3X more gripping power
- 2x Longer life: High grade alloy steel is heat treated for maximum toughness and durability



CRESCENT CONDUIT CUTTER

ATM-CCC42

- Heat treated cutting blade for cutting P.V.C. pipe and water hose up to 42mm diameter.
- Cuts cleanly without the need for de-burring.
- Heavy duty design and construction.
- Bright red colour for easy standout in the tool box and workplace.
- Jaw insert enables the cutting of additional profiles, including square profiles



MILWAUKEE JOBSITE STRAIGHT SCISSORS

ATC-48224044

- Iron Carbide Edge Blades
- Micro-Serrated Blades for Grip While Cutting
- Bolt Lock Technology
- Rust Protection



29 X 460MM SHOCKWAVE POWER UTILITY AUGER

ATC-48136769

- Single Spur Design
- Reinforced Anti-Friction PTFE Coating



GEARWRENCH NUT DRIVER SET W/RATCHET HANDLE

ATM-8196D

- Color-coded stripe for easy identification, and clearly etched sizes that allow you to select the right tool the first time
- Full polished chrome finish is corrosion resistant for long-lasting durability
- Precision, fine-tooth, reversible ratcheting mechanism in the handle allows for ease of use and faster job completion

KLEIN RATCHET CUTTER

ATM-63607



- Reduced hand force for easier cutting
- Patented two-step ratchet mechanism requires fewer strokes per cut
- Cuts up to 336 MCM ACSR, 400 MCM Copper and 600 MCM Aluminum
- Quick release lever opens blades easily in every cutting position, to allow removal of the cable before completion of cut



CABAC HAND HELD CRIMPER (HEX TYPE)

CAB-K05/CAB-K06

- 6-50mm² (K05)
- 6-120mm² (K06)
- Sizes Available
- HEX TYPE Copper Lugs



KOMPRESSOR CRIMPER 12T(SH) 42MM JAW

MSS-LPHC-750-C

- The Kompressor is designed to crimp up to 750 MCM/400mm² Copper and Aluminium connectors directly from an aerial bucket hydraulic tool circuit, or portable hydraulic power unit.
- Exclusive Visual Crimp Indicator, ensuring a correct crimp force of 12 tons / 24,000 lbs
- Double action hydraulic system preventing hang ups
- Accepts all recognised industry standard 'Uinch style 12 tonne dies i.e. MSS, Burndy, Alcoa, Anderson, Thomas & Betts and Huskie (die sets sold separately)
- Industry exclusive MSS designed head and piston completely removing all retract pinch points for ultimate safety - Patent Pending
- Exclusive spring return back up in case there is loss of hydraulic system pressure



LINDSTROM OVAL HEAD MICRO BEVEL DIAGONAL CUTTER 125MM

ATM-440206

- Material: high performance alloyed steel
- Black finish
- Numerically controlled machine grinding guarantees edge angle accuracy and contact; increases the tools reliability and consistency
- Precision induction hardened edges 63-65 HRC
- Screw joint that minimizes friction and maximizes alignment of cutting edges
- ESD safe handles in synthetic material with return spring
- Ideal for wire harness work and standard printed circuit board assembly



GRIPWELL 360 SWIVEL RIVET GUN

GRIPA26003

- 360° Swivelling Head for hard to reach areas
- 4 Nose Pieces included



CRESCENT 542-8CVN 200MM DIAGONAL CUTTING PLIERS

ATM-605222601

- Designed for Heavy-Duty Wire Cutting
- Electronically Induction Hardened Hand-Honed, Long Lasting Cutting Edges
- Made of Forged Alloy Tool Steel
- Individually Tested for Strength and Cutting Ability
- Polished Head



IRWIN LONG NOSE PLIERS

ATM-10505869NA

- Triple layer handle
- Strong gripping teeth
- Induction hardened cutting edge stays sharper longer
- Slim profile nose
- 1000v Insulated



STANLEY BOX FRAME HACKSAW

ATM-STHT20140

-
-
-
-

Bi-material handle for comfort
45° and 90° adjustable blade angle
Robust box beam metal frame
Storage for up to 8 blades

STANLEY HACKSAW BLADE

ATM-15-836-S

- High speed steel blades cut most metals including unhardened tool steel and stainless steel



AUTO-RETRACT SAFETY KNIFE

ATM-WKAR2

- Blade Retracts Automatically the Moment it Loses Contact with the Material Being Cut - Even if the User is Still Holding the Blade Slider Forward in the 'Open' Position
- Helps Reduce Workplace Injuries, Lowering Lost Time and Increasing Productivity



T&E TOOLS FINE FLUSH CUT SIDE NIPPERS

ATM-PT0302

- Fine blade flush cutting pliers for electronic work
- Cushion-grip handles
- Made from drop forged alloy steel, polish finished head



NICHOLSON 300MM FLAT FILE

ATM-903765AU

- 300mm
- Flat File
- Bastard Cut



WISS STRAIGHT CUT AVIATION SNIP

ATM-M3RAU

- Cuts straight, left or right in light stock
- Non-slip serrated jaws are made of wear-resistant molybdenum steel
- Provides extra service demanded by the compound lever action
- Self-opening action for fast, effortless feed
- Vibrant yellow handles for easy identification



LINDSTROM OVAL HEAD MICRO BEVEL DIAGONAL CUTTER 125MM

ATM-440206

- Material: high performance alloyed steel
- Black finish
- Numerically controlled machine grinding guarantees edge angle accuracy and contact; increases the tools reliability and consistency
- Precision induction hardened edges 63-65 HRC
- Screw joint that minimizes friction and maximizes alignment of cutting edges
- ESD safe handles in synthetic material with return spring
- Ideal for wire harness work and standard printed circuit board assembly



GRIPWELL 360 SWIVEL RIVET GUN

GRIPA26003

- 360° Swivelling Head for hard to reach areas
- 4 Nose Pieces included



RATCHET SPANNER (13 & 17MM)

ATM-RPS1317-S

- 6 point
- Dual Size



T&E TOOLS NUT DRIVER

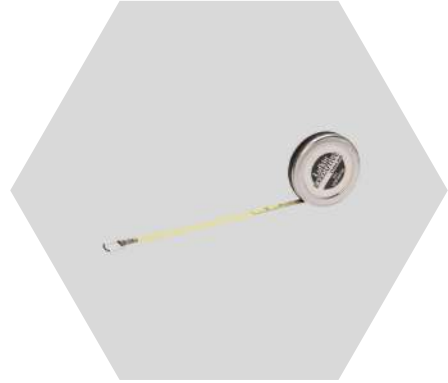
ATM-11-800L

- 10x Sharper, Longer
- 50 Blades Included
- Carbide Construction

LUFKIN TAPE MEASURE

ATM-W606PM

- Designed for Measuring Diameters of Pipe, Cable, Tire, and So On
- Double-sided blade print - simply turn the blade over for a conversion from diameter to circumference
- Durable metal case made from polished chrome
- Easy to read bold graduations
- Pocket sized for easy storage and transport
- Blade style: A20



METRIC 5M TAPE MEASURE

GRIPA06944

5 Metre in length
Solid construction

ROTARY DUAL-SCALE PITCH/ANGLE METER

ATM-SLT-100

- Quickly measure, verify or replicate surface pitch or angle
- Simple, one-hand operation with large thumb-screw positioned on handle
- Big, easy-to-read scales rotate and align using a large bubble vial
- Impact-resistant, heavy-gauge ABS case



CLAMP BANDIT TOOL

TRI-CT1

- For tensioning and cutting of Steel strapping
- Features crank handle along with inbuilt cutting assembly to enable band style clamps or strapping to be tensioned and cut in during installation



BOLT CUTTER 24"/600MM

TRI-HITNBC0600H

- Recommended for heavy duty use
- Maximum hardness of material to be cut: Brinell 450, Rockwell C48, 162kg/mm² or 110 tonnes/square inch
- Durable jaws are forged from high tensile alloy steel that is specially heat treated and suitable for cutting hard materials



TECHNICIAN SAFETY KNIFE

TRITTK1

- Lock back blade
- Wooden Handle
- Rollover safety





DISMANTLING KNIFE (HOOK SHAPE)

TRI-9855155

- 1000v working capacity
- Hook Shape
- Guide Shoe
- Protection Cap



REPELEC FLINT GUN

REP-308789

- No Gas Required
- Easy spark creation



TOLEDO MASTER BIT SET

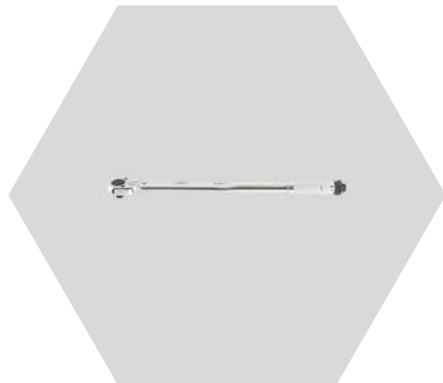
TRI301447

- Compact bit set with a variety of popular screw head combinations including Slotted, Phillips, Pozidriv, Torx, Tamper Proof Torx and Hex
- Includes 1/4" square drive bit holder
- For the removal and installation of screws, bolts and fittings, ideal for use with power screwdrivers or drills

SPANNER COMBINATION RING - 46MM

ATM-64646

- Forged from Heat Treated Chrome Vanadium Steel with Chrome plating which resists corrosion
- Double Mirror Polish Finish which easily wipes clean.
- 15° offset for better access in tight spaces
- Longer handle for improved reach & higher leverage



TORQUE WRENCH 1/2' SQUARE DRIVE

ATM-301099

- Click-stop design with heavy duty cam for superior strength and durability
- Suitable for single direction tightening right hand threads only (clockwise)
- Reversible thumb switch with 24 tooth ratchet head
- Micrometer style adjuster provides precise torque setting

BREAKER BAR 1/2' DR RATCHET HEAD

ATM-321250

- Adjustable length high torque breaker bars provide greater flexibility and versatility
- Ratcheting head with high torque capabilities allows for use in heavier duty applications
- Telescopic handle: 410-610mm





TRADEFLAME 35MM BRASS BURNER

PRI-215045

- This Windproof 35mm Burner is part of the TradeFlame Professional range and has been designed as a heavy duty yet lightweight burner, for use with all TradeFlame Professional necktubes. Ideal for brazing, soldering and heating.
 - Heavy Duty and Lightweight
 - Windproof Burner
 - Brass

MISC.



DY-MARK ZINC STENCIL SET

ATM-04047506

- No Sharp Edges
- Robust Construction



FLAG FFL 12MM

ATM-T11T

- Handheld PVC flag with wooden handle
- Size: 300mm x 300mm



CABAC HAND HELD CRIMPER (<25MM²)

CABK28

- Hand Held
- 6-25mm² Capacity
- Copper Lugs
- Crimp Type = 'W'



10-1000V DUAL RANGE VOLTAGE DETECTOR (TOOL ONLY)

ATC-2203-20

- Automatically differentiates 10-49V and 50-1000V.
- Different colours identify voltage range.
- Built-in LED work light.
- Auto-off.
- AAA Battery Included

IRWIN VISE GRIPS

ATM-T11T

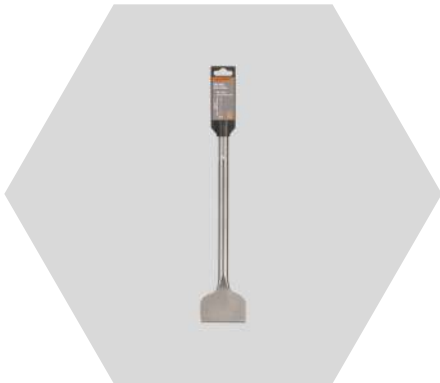
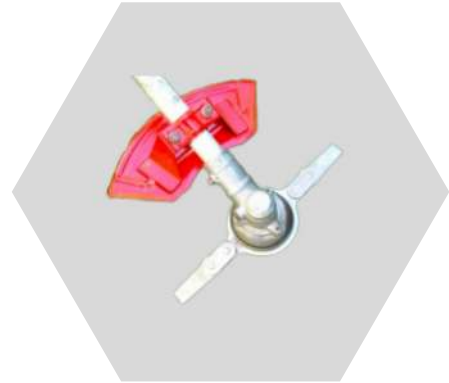


- Provides comfort, control and less hand fatigue
- Jaw mechanism provides 3X more gripping power
- 2x Longer life: High grade alloy steel is heat treated for maximum toughness and durability

HEAVY DUTY WEED WAKKA

ATM-WWK-HD

- Ideal for clearing everything from fine grass to tussock, blackberry, lantana and tree saplings up to thumb thickness
- Double articulated blades reduce kickback if solid object is hit



CHISEL BIT SDS MAX

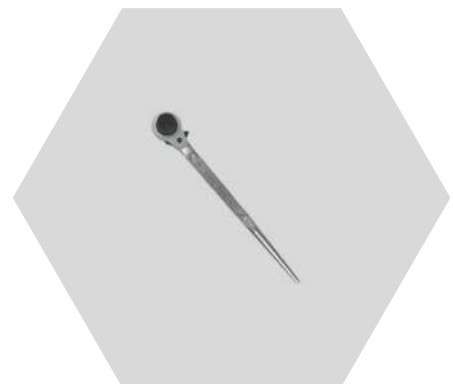
ATM-2390240

- Made from durable steel
- Great for light demolition tasks
- Suits any brand of SDS Max tools

PODGER RATCHET

ATM-RRP2430

- ATM-RRP2430 - PODGER RATCHET "KING DICK" - 24 X 30MM
- Precisely machined
- Heat-treated
- Zinc plated
- High quality steel



WIRE BRUSH WITH SCRAPERS

ATM-TJQ0065

- Long lasting carbon steel wire bristles
- Heavy duty wooden handle for added comfort
- Narrow head for hard to reach area



DYMARK SPRAY & MARK

DYM-40013511

- Toluene-free formula
- High opacity, high quality, true colour pigment loading
- Applications include construction, landscaping, civil works and surveying
- Unique spray pattern specifically designed for spot marking as well as "writing" applications
- 12 in carton



DOW CORNING CLEAR SILICON

ATM-S732CL

- General purpose sealant
- Paste consistency
- Bonding agent
- Space-filling rubber adhesive





STANLEY BOX FRAME HACKSAW

ATM-STHT20140

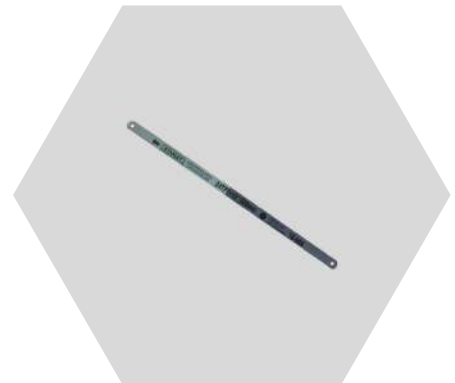
-
-
-
-

Bi-material handle for comfort
45° and 90° adjustable blade angle
Robust box beam metal frame
Storage for up to 8 blades

STANLEY HACKSAW BLADE

ATM-15-836-S

- High speed steel blades cut most metals including unhardened tool steel and stainless steel



AUTO-RETRACT SAFETY KNIFE

ATM-WKAR2

- Blade Retracts Automatically the Moment it Loses Contact with the Material Being Cut - Even if the User is Still Holding the Blade Slider Forward in the 'Open' Position
- Helps Reduce Workplace Injuries, Lowering Lost Time and Increasing Productivity



IRWIN 32MM WOOD CHISEL

ATM-1053669ANZ

- Large strike cap withstands repetitive hammer strikes
- Ergonomic handle design with ProTouch Grip is durable enough to withstand the roughest jobsite
- Premium steel quality for improved sharpness and edge retention
- Blade tempered, annealed and hardened to the last inch for longer life



STANLEY FATMAX CARBIDE UTILITY BLADES

ATM-11-800L

- 10x Sharper, Longer
- 50 Blades Included
- Carbide Construction



TRADEFLAME 35MM BRASS BURNER

PRI-215045

- This Windproof 35mm Burner is part of the TradeFlame Professional range and has been designed as a heavy duty yet lightweight burner, for use with all TradeFlame Professional necktubes. Ideal for brazing, soldering and heating.
 - Heavy Duty and Lightweight
 - Windproof Burner
 - Brass

MISC.



DY-MARK ZINC STENCIL SET

ATM-04047506

- No Sharp Edges
- Robust Construction



FLAG FFL 12MM

ATM-T11T

- Handheld PVC flag with wooden handle
- Size: 300mm x 300mm



T&E TOOLS HEX-KEY SET (9P)

TEC-6809

- Keys will turn up to 25° angle.
- Made from S2 steel and are precision heat treated for maximum performance.
- Meets ANSI B18.3 industry standards. Retained in a friction ring holder for secure retention.
- 1.5mm, 2mm, 2.5mm, 3mm, 4mm, 5mm, 6mm, 8mm, 10mm.



MILWAUKEE SABRE SAW BLADE

ATC-48005784

- Optimized tooth design providing 2X more life than our previous generation SAWZALL® blades
- Tough Neck™ ribs strengthen the blade tang and minimize breakage
- Grid Iron™ honeycomb pattern increases blade rigidity to resist blade buckling.
- 18 TEETH PER INCH
- Length: 150mm



18' SHIFTER 450MM

ATM-88450

- Metric graduation markings on jaw
- Non-protruding jaw shank to allow access in tight spaces
- Parallel jaws ensure superior grip of bolts and fasteners
- Features a four thread knurl offering smooth, uninhibited opening and closing of jaws

RATCHET SPANNER 24MM COMBINATION

ATM-9624N

- 72 tooth ratcheting box end needs a minimal 5° to move fasteners vs. 30° for standard wrenches
- Flush mounted reversing lever allows you to change direction without removing the wrench
- Off-corner loading design on box end provides better grip and reduces fastener rounding
- Pass-thru® technology works down any length of threaded rod and long bolts



STANLEY COMBO PLIERS

ATM-84-002-S

- Bi-material handle with secure grip grooving
- For gripping & cutting applications
- Hand ground, induction hardened blade for long life
- Heat treated high chrome steel forging for long life and durability





ABN 44 071 568 771

"A-Z Product Solutions for Trade and Industry"

sales@all-trades.com.au

www.all-trades.com.au



SOCKET SET 26 PIECE DEEP - IMPACT 1/2' DRIVE 10 - 36MM

ATM-605222601

- Metric Standard
- Sockets mounted in Blow-mould Case

HAND TOOLS



WISS 9 3/4" METALMASTER COMPOUND ACTION SNIPS

ATM-M2R

- Right cut, cuts right from tight curve to straight
- Cuts low carbon cold rolled steel
- Non-slip serrated jaws are made of wear-resistant molybdenum steel
- Provides extra service demanded by the compound lever action



Sydney Office
11/5 Hudson Ave
Castle Hill NSW 2154
Ph: 02 8850 2700



Melbourne Office
4/5 Kelleys Rd
Rowville VIC 3178
Ph: 03 9780 4850



NICHOLSON 200MM TAPER FILE

ATM-914291AU

- Strips Semi-con layer from insulation
- Tapered Design
- 200mm
- Triangular



CRESCENT TORPEDO LEVEL 200MM X 90MM

ATM-PTM520

- Magnetic Torpedo Level 200mm x 90mm
- 3 Vial - Horizontal, Vertical & 45 Degree
- Magnetic Measuring Surface
- Multipurpose Level for Everyday Use
- 13-42mm



SPLIT BOLT SPANNER (B26 & B28)

HAY-HLTS/2

- 4 ended for type A,B,C and D connectors
- 17.9mm (A connector)
- 23.2mm (B connector)
- 27.7mm (C connector)
- 27.7mm (D connector)
- 165 g weight



ABN 44 071 568 771

"A-Z Product Solutions for Trade and Industry"

sales@all-trades.com.au

www.all-trades.com.au

DUBUIS BCL035C INLINE HYDRAULIC CABLE CUTTER

DUB-BCL035C

FEATURES

- Multi strand cable cutting.
- Accommodates Copper & Aluminium Cable
- 35mm O/D
- 180° Rotatable Head
- Parrot Beak Style Cutting Head for smooth cuts
- Maximum Operating Speed with High Performance Motor
- Field Proven by DeWalt/Stanley

SPECIFICATIONS

Weight (inc. Battery) 3.3kg
Dimensions 107x78x445mm
Cutting Time 8-12s
Force 45kN



TOOLS & ACCESSORIES



Sydney Office
11/5 Hudson Ave
Castle Hill NSW 2154
Ph: 02 8850 2700



Melbourne Office
4/5 Kelleys Rd
Rowville VIC 3178
Ph: 03 9780 4850

DUBUIS BPE031 MINI PISTOL CRIMPER

DUB-BPE031

- Identical force, stroke and capacities as the manual tool D31 and the battery operated tool BPL031.
- Narrow head to work in switchboards

STROKE	8 mm
FORCE	35 kN
CRIMPING TIME (depending on section)	3 to 4 s
BATTERY CAPACITY (for 95 mm ² copper lug)	270 crimps
DIMENSIONS (L x l x h in mm)	260 x 60 x 240
WEIGHT (with battery)	2.360 kg



APPLICATIONS	SECTIONS
⊗ Copper lugs and sleeves - NFC 20-130	4 > 95 mm ²
⊗ Bare or insulated sleeves in copper or alu - EDF	E54 > E140
⊗ Copper or alu lugs and sleeves - DIN 48083	K24 > K218
⊗ C-shaped connectors	C6 > C16
⊗ Copper lugs and sleeves - NFC 20-130	10 > 70 mm ²



DIMENSIONS (mm)	520 x 440 x 130
WEIGHT	2.300 kg

> Case and charger delivered with the tool.
 > **NEOELEC™** accessories
 Refer to **PAGE 56 - 57**.



DUBUIS BPE130 PISTOL 130kN CRIMPER

DUB-BPE130

FEATURES

- 13 Tonne (130kN) Output Force
- 6mm²-400mm² Hexagonal Crimping Capacity (dependent on stroke size)
- 180° Rotatable Head
- High Performance Brushless Motor
- Field Proven Heavy Duty Tool Housing
- Open/Close Head
- Weatherproof Membrane

STROKE	12 mm
FORCE	130 kN
CRIMPING TIME [depending on section]	8 to 14 s
BATTERY CAPACITY (for 185 mm ² copper lug)	50 crimps
DIMENSIONS (L x l x h in mm)	310 x 65 x 300
WEIGHT (with battery)	4.680 kg

SPECIFICATIONS

Weight (inc. Battery) 4.68kg
 Dimensions 310×65×300mm
 Crimping Time 8-14s
 Force 130kN (13 Metric Tonne)



APPLICATIONS	SECTIONS
⊗ Copper lugs and sleeves – NFC 20-130	6 > 400 mm ²
⊗ Bare or insulated sleeves in copper or alu. – EDF	E54 > E280
⊗ Copper or alu lugs and sleeves – DIN 48083	KZ8 > KZ34
⊗ C-shaped connectors	C10 > C70
⊗ Pre-rounding die sets	50 > 300 mm ²
⊗ Copper lugs and sleeves – NFC 20-130	10 > 240 mm ²



DIMENSIONS (mm)	520 x 440 x 130
WEIGHT	2.300 kg

> Case and charger delivered with the tool.
 > **NEOLEC™** accessories.
 Refer to **PAGE 56 – 57**.



INSULATING RUBBER HOSE SET-10F- COUPLERS

DESCRIPTION

- Twinline non-conductive flexible rubber hose sets are suitable for use on medium pressure hydraulic systems where shock hazards exist and non-conductivity is required.

FEATURES

- Pressure testing to 3375psi and held for 5 minutes
- Electrically tested to state or utility regulations
- Fitted with couplers and hose fittings to your specifications (Please call for a quotation)
- Other lengths available on request

SPECIFICATIONS

- Max. Working Pressure: 2250psi / 15.5 Mpa
- Min. Burst Pressure: 9000psi / 62.1 Mpa



DUBUIS BCL025G INLINE HYDRAULIC CABLE CUTTER

DUB-BCL025G

FEATURES

- Flip Open/Close Head
- 180° Rotatable Head
- Guillotine Style Cutting Head
- Wire rope
- 16mm O/D
- Cu/Al
- 22mm O/D

SPECIFICATIONS

Weight (inc. Battery) 3.3kg
 Dimensions 128x75x400mm
 Cutting Time 8-12s
 Force 55kN (5.5 Metric Tonne)



FORCE	55 kN
CUTTING TIME	8 to 12 s
CUTTING CAPACITY – DEPENDS ON MATERIALS	
DIMENSIONS (L x l x h in mm)	128 x 75 x 400
WEIGHT (with battery)	3.300 kg

	TYPE OF CABLES	MAX. HARDNESS	MAX. CUTTING Ø *
MULTI-STRAND CABLES	7 x 19 strands – steel	100 > 120 daN/mm ²	Ø 15 > 16 mm
	7 x 37 strands – steel	130 > 145 daN/mm ²	Ø 12 > 13 mm
ELECTRICAL CABLES	Bare - copper/aluminum		300 mm ²
	Rigid multi-strand – copper/aluminum		Ø 20 > 22 mm
	Semi-rigid multi-strand – copper/aluminum		
ROUND BARS	Copper	< 20 daN/mm ²	Ø 20 > 22 mm
	Hard copper	20 > 28 daN/mm ²	Ø 15 > 18 mm
	Aluminum	< 20 daN/mm ²	Ø 20 > 25 mm
	Mild steel	42 > 45 daN/mm ²	Ø 12 > 14 mm
	Medium hard steel	50 > 70 daN/mm ²	Ø 10 mm
INSULATED CABLES	Depends on the thickness of insulation		150 > 240 mm ²
	Stainless steel	< 150 daN/mm ²	Ø 8 > 10 mm



DUBUIS EARTH BONDS

The Dubuis Earth Bonding system is an innovative method for setting a secure fixing with a reliable electrical connection. The earth bond offers an equipotential link between a structure and equipment, and allows the passage of high intensity current in case of short-circuit.

APPLICATIONS

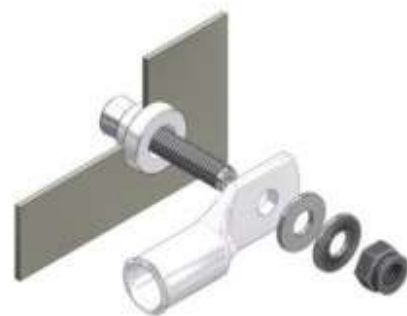
DUBUIS earth bonds are currently used for several applications :

- Rolling stock The automotive
- Off shore
- Military vehicles
- Ship construction
- Etc.



HOW THEY WORK

A tensile load applied by a calibrated PMT pulling tool allows the dowel to be pulled through the shouldered bushing, while remaining fixed in the pre-drilled hole of the structure. As the conical dowel passes through the bushing, the bushing expands within the cavity making electrical contact within the metal structure and establishing a permanent electrical connection. Once the bond is set up, it offers conductive platform to make contact with the lug and threaded stud to secure its connection.



Process in 3 steps only !

① DRILLING



② SETTING



③ CONNECTION



KUDOS EP-30S 220V HYDRAULIC PUMP

- Fully remote controlled, allows the operator to advance, hold or retract at any time.
- Two-stage pumping action.
- Output force can be adjusted as necessary by stopping the advance or retract.
- 3/4 HP heavy-duty motor.
- Durable steel construction with built-in carrying handle.
- Low amperage requirement.
- Oil level is visible.



KUDOS CEP-15SS HYDRAULIC PUMP

- Pressure and operation data of date by display function.
- Programming switch for crimping, cutting or lifting propose on the panel.
- Warning Function: Buzzer alert at long deep if crimping not complete and losing pressure when failure caused.
- Display related pumping pressure and battery capacity.
- Environmentally design for saving energy as automatic switch to sleep mode after 3 mins without any activate action.
- Interior counting function attached
- PSI / BAR unit available.
- Shoulder strap for high wearing comfort





CABAC HAND HELD CRIMPER (HEX TYPE)

CAB-K05/CAB-K06

- 6-50mm² (K05)
- 6-120mm² (K06)
- Sizes Available
- HEX TYPE Copper Lugs



KOMPRESSOR CRIMPER 12T(SH) 42MM JAW

MSS-LPHC-750-C

- The Kompressor is designed to crimp up to 750 MCM/400mm² Copper and Aluminium connectors directly from an aerial bucket hydraulic tool circuit, or portable hydraulic power unit.
- Exclusive Visual Crimp Indicator, ensuring a correct crimp force of 12 tons / 24,000 lbs
- Double action hydraulic system preventing hang ups
- Accepts all recognised industry standard 'Uinch style 12 tonne dies i.e. MSS, Burndy, Alcoa, Anderson, Thomas & Betts and Huskie (die sets sold separately)
- Industry exclusive MSS designed head and piston completely removing all retract pinch points for ultimate safety - Patent Pending
- Exclusive spring return back up in case there is loss of hydraulic system pressure

KUDOS HYCP-60ST CRIMPING HEAD

FEATURES

- Operated by any hydraulic pump with rated oil pressure of 700 bar (10,000 psi).
- Single action cylinder with spring return.
- Detachable ground stand as a standard accessory.
- Large handle for easy carrying.
- Removable die cap for easy connector positioning.
- Solid metal loop at base for hoist work.
- Compression head is designed as a portable tool for installing compression sleeves and terminals for transmission construction and/or maintenance work.

SPECIFICATIONS

- Max. Pressure : 700 bar
- Oil Required : 308 cc
- Max. Output : 60.81 tons / 541.0 kN
- Ram Stroke : 38.7 mm
- Length : 446 mm
- Weight : 21.3 kgs

CRIMPING CAPACITY

- Crimping range : up to 60 mm O.D.sleeve
- Accepts all dies used for Alcoa, 60 ton compressors
- Single-Acting hydraulic pump required



KUDOS HYCP-630HE CRIMPING HEAD

FEATURES

- Simple U-type head design is solid and durable.
- Lock pin design holds die firmly in place.
- Operated by any hydraulic pump with rated oil pressure of 700 bar (10,000 psi).
- Single action cylinder with spring return.

SPECIFICATIONS

- Max. Pressure : 700 bar
- Oil Required : 89 cc
- Max. Output : 24.91 tons / 221.6 kN
- Length : 320 mm
- Weight : 5.7 kgs

CRIMPING CAPACITY

- Max. crimping capacity : 600 mm²
- Compatible with all dies used for Alcoa, Burndy, T&B, Klauke, Combre and Blackburn
- CU 400/500/630 dies included
- Available for 12 ton die when used with Adapter(ADP-630THE)
- 12 ton dies sold separately.



KUDOS HYSC-20 HYDRAULIC CUTTER

FEATURES

- 180° rotating head for convenient operation.
- Superior guillotine type cutting for less jamming than shear type cutters.
- Single stage pumping action.
- All blades are easily replaceable.
- Flip-top latch for easy insertion of cutting material.
- Single stage pump action with spring return.
- No set-up time required.
- Lightweight, self-contained tool, can be used anywhere.

SPECIFICATIONS

- Max pressure : 550 bar
- Oil required : 22 cc
- Max output : 5.85 tons / 52.0 kN
- Length : 344 mm
- Weight : 2.5 kgs

CUTTING CAPACITY

- Wire rope 6x7 : 16 mm
- Wire rope 6x12 : 20 mm
- Wire rope 6x19 : 20 mm
- Soft copper bar : 20 mm
- Soft aluminum bar : 16 mm
- Underground cable : 18 mm
- Soft steel bar : 16 mm
- Reinforcing rod : 13 mm
- Cu strands : 20 mm
- Al strands : 20 mm
- ACSR : 21 mm
- Guy wire 1x7 : 15 mm
- Guy wire 1X19 : 16 mm
-



KUDOS HYSC-45HE CUTTING HEAD

FEATURES

- Fast cutting with remote operation
- Operated any hydraulic pump with rated oil pressure of 700 bar (10000psi)
- Blades are easily replaceable
- Flip-top latch for easy insertion of cutting material.

SPECIFICATIONS

- Max pressure : 700 bar
- Oil required : 72 cc
- Max output : 10.73 tons / 95.5 kN
- Length : 346 mm
- Weight : 4.4 kgs

CUTTING CAPACITY

- Wire rope 6x7 : 40 mm
- Wire rope 6x12 : 40 mm
- Wire rope 6x19 : 40 mm
- Soft copper bar : 32 mm
- Soft aluminum bar : 40 mm
- Soft steel bar : 20 mm
- Cu strands : 40 mm
- Al strands : 40 mm
- ACSR : 40 mm



KUDOS HYSC-55HE CUTTING HEAD

FEATURES

- Functional handle for convenient operation.
- Fast cutting with remote operation
- Operated any hydraulic pump with rated oil pressure of 700 bar (10000psi)
- Blades are easily replaceable
- Flip-top latch for easy insertion of cutting material.
- Single action cylinder with spring return.

SPECIFICATIONS

- Max pressure : 700 bar
- Oil required : 107 cc
- Max output : 16.44 tons / 146.3 kN
- Length : 415 mm
- Weight : 8.4 kgs

CUTTING CAPACITY

- Wire rope 6x7 : 25 mm
- Wire rope 6x12 : 30 mm
- Wire rope 6x19 : 30 mm
- Soft steel bar : 22 mm
- Reinforcing rod : 19 mm
- Cu strands : 50 mm
- Al strands : 50 mm
- ACSR : 50 mm
- Guy wire 1x7 : 15 mm
- Guy wire 1x19 : 20 mm
- Soft copper bar : 24 mm
- Soft aluminum bar : 18 mm
- Underground cable : 24 mm



KUDOS S-24 HYDRAULIC CUTTER

FEATURES

- 180° rotating head for convenient operation.
- Superior guillotine type cutting for less jamming than shear type cutters.
- Two stage pumping action.
- All blades are easily replaceable.
- Flip-top latch for easy insertion of cutting material.
- Single stage pump action with spring return.
- No set-up time required.
- Lightweight, self-contained tool, can be used anywhere.
- One spare cutting blade can be stored inside of the moveable handle.

SPECIFICATIONS

- Max pressure : 700 bar
- Oil required : 32 cc
- Max output : 8.78 tons / 78.1 kN
- Length : 425 mm
- Weight : 3.9 kgs

CUTTING CAPACITY

- Wire rope 6x7 : 18 mm
- Wire rope 6x12 : 24 mm
- Wire rope 6x19 : 24 mm
- Soft steel bar : 20 mm
- Reinforcing rod : 16 mm
- Cu strands : 24 mm
- Al strands : 24 mm
- ACSR : 24 mm
- Guy wire 1x7 : 20 mm
- Guy wire 1x19 : 20 mm
- Underground cable : 24 mm



KUDOS UB-400 HYDRAULIC HAND CRIMPER

FEATURES

- 330° rotating head for convenient operation.
- Fiberglass handles are durable and light weight.
- External adjustable relief valve.
- Pressure relief valve for overload protection.
- Automatic low/high-pressure conversion with rapid/slow operating motion.
- Two-stage hydraulic system reduces the number of pumps required

SPECIFICATIONS

- Max. Pressure : 700 bar
- Oil Required : 48 cc
- Max. Output : 14.01 tons / 124.6 kN
- Jaw Opening : 26 mm
- Height : 598 mm
- Weight : 6.8 kgs

- Max. Compression : 400mm² copper / aluminum lugs.
- Accepts all dies used for Alcoa, Burndy, T&B, Klauke, Cembread Blackburn 6 tons compressors.



KUDOS UB-412 THE CRIMPING HEAD

FEATURES

- C-frame has open jaw for easy access to the fitting.
- Operated by any hydraulic pump with rated oil pressure of 700 bar (10,000 psi).
- Single action cylinder with spring return.
- Dies are easy to change.
- Crimping capacity identical to UB-412T tool.

SPECIFICATIONS

- Max. Pressure : 700 bar
- Oil Required : 53 cc
- Max. Output : 14.01 tons / 124.6 kN
- Jaw Opening : 32 mm
- Length : 261 mm
- Weight : 4.2 kgs

CRIMPING CAPACITY

- Max. compression : 400 mm² copper lugs
- Accepts all dies used for Alcoa, Burndy, T&B, Klauke, Combre and Blackburn 12-ton compressors



KUDOS UB-413 HYDRAULIC HAND CRIMPER

FEATURES

- Fiberglass handles are durable and light weight.
- Pressure relief valve for overload protection.
- Automatic low/high-pressure conversion with rapid/slow operating motion.
- 180° rotating head for convenient operation.
- External adjustable relief valve.
- Two-stage hydraulic system reduces the number of pumps required.

SPECIFICATIONS

- Max. Pressure : 700 bar
- Oil Required : 147 cc
- Max. Output : 14.01 tons / 124.6 kN
- Jaw opening : 40 mm
- Length : 635 mm
- Weight : 6.7 kgs

- Max. Compression : 400 mm² copper lugs
- Accepts all dies used for Alcoa, Burndy, T&B, Klauke, Cembread Blackburn 6 tons compressors.





MP-10 LV CRIMPER

RNJ-MP10-SIMPI

- LV Service Connections
- Dedicated Die (14mm A/F)
- 9mm Wide



STANLEY CT10 HYDRAULIC CRIMPING TOOL

ATM-CT10066AN

- CT10 STANLEY® with its unique C-type opening of 1 1/2 inches permits the operator to crimp material up to 750 MCM aluminum or copper cable. The larger opening can eliminate the need for larger, more expensive 15 ton tools when crimping large connectors that don't require 15 tons of die load. The CT10 STANLEY® accepts standard U-type dies.

DUBUIS EARTH BOND SETTING TOOLS

DUB-PMT

The Dubuis Earth Bonding system is an innovative method for setting a secure fixing with a reliable electrical connection. The earth bond offers an equipotential link between a structure and equipment, and allows the passage of high intensity current in case of short-circuit.

AVAILABLE MODELS

- PMT6
- PMT8
- PMT10

(each number pertains to a corresponding earth bond thread type)
eg. 6 = M6 Thread



DUBUIS BPL055 INLINE 55KN CRIMPER

DUB-BPL055

FEATURES

- Flip Open/Close Head
- 180° Rotatable Head
- Interchangeable Dies
- 4mm²-240mm² Hexagonal Crimping Capacity
- Maximum Operating Speed with High Performance Motor
- Field Proven by DeWalt/Stanley

STROKE	13 mm
FORCE	55 kN
CRIMPING TIME (depending on section)	3 to 5 s
BATTERY CAPACITY (for 185 mm ² copper lug)	220 crimps
DIMENSIONS (L x l x h in mm)	128 x 75 x 390
WEIGHT (with battery)	2.900 kg

APPLICATIONS	SECTIONS
 Copper lugs and sleeves – NFC 20-130	4 > 240 mm ²
 Copper or alu. lugs and sleeves – DIN 48083	KZ6 > KZ32
 C-shaped connectors	C6 > C35
 Pre-rounding die sets	6 > 240 mm ²
 Bars or insulated sleeves in copper or alu.	E54 > E215

SPECIFICATIONS

Weight (inc. Battery) 2.9kg
 Dimensions 128x75x390mm
 Crimping Time 3-5s
 Force 55kN (5.5 Metric Tonne)



DIMENSIONS (mm)	471 x 415 x 118
WEIGHT	2.050 kg

> Case and charger delivered with the tool.
 > NEOELEC™ accessories
 Refer to PAGE 56 – 57.



DUBUIS BPL062 INLINE 62KN CRIMPER

DUB-BPL062

FEATURES

- Flip Open/Close Head
- 180° Rotatable Head
- Interchangeable Dies
- 6mm²-300mm² Hexagonal Crimping Capacity
- High Performance Brushless Motor with In-Line Capability
- Field Proven by DeWalt/Stanley

SPECIFICATIONS

Weight (inc. Battery) 3.25kg
 Dimensions 128x75x395mm
 Crimping Time 3-5s
 Force 62kN (6.2 Metric Tonne)

APPLICATIONS	SECTIONS
⊗ Copper lugs and sleeves – NFC 20-130	6 > 300 mm ²
⊗ Copper or alu. lugs and sleeves – DIN 48083	K26 > K234
⊗ C-shaped connectors	C10 > C50
⊗ Pre-rounding die sets	25 > 240 mm ²
⊗ Bare or insulated sleeves in copper or alu.	E54 > E280

STROKE	13 mm
FORCE	62 kN
CRIMPING TIME (depending on section)	3 to 5 s
BATTERY CAPACITY (for 185 mm ² copper lug)	220 crimps
DIMENSIONS (L x l x h in mm)	128 x 75 x 395
WEIGHT (with battery)	3.250 kg



DIMENSIONS (mm) 471 x 415 x 116

WEIGHT 2.050 kg

> Case and charger delivered with the tool.

> **NEOelec™** accessories

Refer to **PAGE 56 – 57**.



DUBUIS BPP130 NEOELEC 130KN CRIMPING TOOL

DUB-BPP130

FEATURES

- 13 Tonne (130kN) Output Force
- Forged Crimping Head
- 6mm²-400mm² Hexagonal Crimping Capacity (dependent on stroke size)
- 180° Rotatable Head
- Mechanical Crimp Stop Indicator
- High Performance Brushless Motor
- Field Proven Heavy Duty Tool Housing
- Weatherproof Membrane

SPECIFICATIONS

Weight 6.5-7kg (w/ Battery)

Dimensions 4**x75x310

Available with Strokes: 26mm, 38mm, 44mm



APPLICATIONS	SECTIONS (-26)	SECTIONS (-32)	SECTIONS (-38)
⊗ Copper lugs and sleeves – NFC 20-130	6 > 300 mm ²	6 > 400 mm ²	6 > 400 mm ²
⊗ Bare or insulated sleeves in copper or aluminum – EDF	E54 > E235	E54 > E280	E54 > E280
⊗ Copper or aluminum lugs and sleeves – DIN 48083	K26 > KZ28	K26 > KZ32	K26 > KZ38
⊗ C-shaped connectors	C10 > C70	C10 > C70	C10 > C70
⊗ Pre-rounding die sets	50 > 300 mm ²	50 > 300 mm ²	50 > 300 mm ²
⊗ Copper lugs and sleeves – NFC 20-130	10 > 240 mm ²	10 > 240 mm ²	10 > 240 mm ²

STROKE	26 mm	32 mm	38 mm
FORCE	130 kN	130 kN	130 kN
DIMENSIONS (L x l x h in mm)	400 x 75 x 310	415 x 75 x 310	430 x 75 x 310
WEIGHT (with battery)	6.500 kg	6.800 kg	7.000 kg

Die sets
6 > 400 mm²



DIE SETS
Refer to **PAGES 89 – 97.**



DIMENSIONS (mm) 594 x 494 x 149

WEIGHT 3.660 kg

> Case and charger delivered with the tool.

> NEOELEC™ accessories
Refer to **PAGE 56 – 57.**





CABAC HAND HELD CRIMPER (HEX TYPE)

CAB-K05/CAB-K06

- 6-50mm² (K05)
- 6-120mm² (K06)
- Sizes Available
- HEX TYPE Copper Lugs



KOMPRESSOR CRIMPER 12T(SH) 42MM JAW

MSS-LPHC-750-C

- The Kompressor is designed to crimp up to 750 MCM/400mm² Copper and Aluminium connectors directly from an aerial bucket hydraulic tool circuit, or portable hydraulic power unit.
- Exclusive Visual Crimp Indicator, ensuring a correct crimp force of 12 tons / 24,000 lbs
- Double action hydraulic system preventing hang ups
- Accepts all recognised industry standard 'Uinch style 12 tonne dies i.e. MSS, Burndy, Alcoa, Anderson, Thomas & Betts and Huskie (die sets sold separately)
- Industry exclusive MSS designed head and piston completely removing all retract pinch points for ultimate safety - Patent Pending
- Exclusive spring return back up in case there is loss of hydraulic system pressure

KUDOS EP-30S 220V HYDRAULIC PUMP

- Fully remote controlled, allows the operator to advance, hold or retract at any time.
- Two-stage pumping action.
- Output force can be adjusted as necessary by stopping the advance or retract.
- 3/4 HP heavy-duty motor.
- Durable steel construction with built-in carrying handle.
- Low amperage requirement.
- Oil level is visible.



KUDOS CEP-15SS HYDRAULIC PUMP

- Pressure and operation data of date by display function.
- Programming switch for crimping, cutting or lifting propose on the panel.
- Warning Function: Buzzer alert at long deep if crimping not complete and losing pressure when failure caused.
- Display related pumping pressure and battery capacity.
- Environmentally design for saving energy as automatic switch to sleep mode after 3 mins without any activate action.
- Interior counting function attached
- PSI / BAR unit available.
- Shoulder strap for high wearing comfort



CRIMPING DIE SETS

D36 – BPL036



DIE SETS FOR HEXAGONAL CRIMPING – ACCORDING TO STANDARD NFC 20.130

APPLICATION	LUG SECTION (mm ²)	CRIMPING WIDTH (mm)	NUMBER OF CRIMPS	PART No.
Copper tubular sleeves and lugs	4	5	1	02633-01
	6	9	1	02454-01
	10	9	1	02431-01
	16	9	1	02432-01
	25	9	1	02433-01
	35	9	1	02413-01
	50	5	2	02434-01
	70	5	2	02435-01
	95	5	2	02414-01
	120	3.5	3	02437-01
	150	3.5	3	02415-01

DIE SETS FOR HEXAGONAL CRIMPING – ACCORDING TO EDF STANDARD

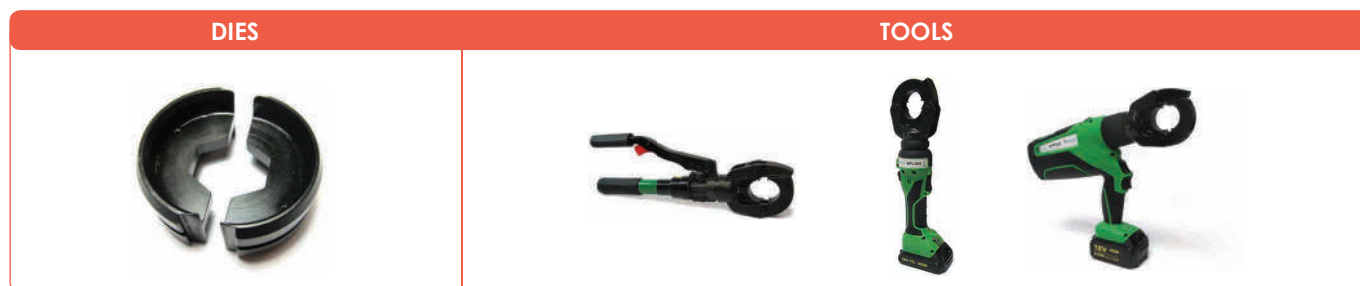
APPLICATION	TYPE	CRIMPING WIDTH (mm)	PART No.
Bare sleeves to be crimped on aluminium cable	E54	5	02625
	E68	5	02626
	E72	5	02627
	E83	5	02628
	E100	5	02622
	E120	5	02629
Insulated sleeves to be crimped on aluminium cable	E140	9	02377
	E173	9	02376
	E215	9	02371

HEXAGONAL DIE SETS FOR SIGNALLING AND TRACTION CURRENT RETURN

APPLICATION	TYPE	CRIMPING WIDTH (mm)	PART No.
SCNV 7.42 mm ² copper cable: for crimping lugs	36DE68	5	02626
35 mm ² 750NE copper cable: for crimping lugs and extension sleeves	36DE90	9	02413-01
70 mm ² 750NE copper cable: for crimping lugs and extension sleeves	36DE120	5	02435-01
50 and 95 mm ² aluminium cables: for crimping bimetallic lugs and sleeves (aluminium part)	36DE173	9	02376

CRIMPING DIE SETS

D62 – BPL062 – BPP062



DIE SETS FOR HEXAGONAL CRIMPING – ACCORDING TO STANDARD NFC 20.130

APPLICATION	LUG SECTION (mm ²)	CRIMPING WIDTH (mm)	NUMBER OF CRIMPS	PART No.
Copper tubular sleeves and lugs	6	9	1	84105-01
	10	9	1	84106-01
	16	9	1	84107-01
	25	9	1	84108-01
	35	12	1	84109-01
	50	12	1	84110-01
	70	5	2	84111-01
	95	5	2	84112-01
	120	5	2	84113-01
	150	5	2	84114-01
	185	5	2	84115-01
	240	5	2	84116-01

HEXAGONAL DIE SETS FOR SIGNALLING & TRACTION CURRENT RETURN

APPLICATION	TYPE	CRIMPING WIDTH (mm)	PART No.
SCNV 7.42 mm ² copper cable: for crimping lugs	6DE68	15	84164
35 mm ² 750 NE copper cable: for crimping lugs and extension sleeves	6DE90	10	84166
70 mm ² 750 NE copper cable: for crimping lugs and extension sleeves	6DE120	9	84163
50 and 95 mm ² aluminium cables: for crimping bimetallic lugs and sleeves (aluminium part)	6DE173	14	84165
For crimping "C" 70/70 connectors	6DX255	6	84167

CRIMPING DIE SETS

C130 NEO – XC130 NEO – BPP130

DIES**TOOLS****HEXAGONAL DIE SETS FOR OVERHEAD CONTACT WIRES APPLICATIONS**

EXAMPLE OF APPLICATION	TYPE	CRIMPING WIDTH (mm)	SNCF SYMBOL	DUBUIS PART No.
Crimping of coperit No.3	12DE61	12	0.393.1145	30566-01
Crimping of 9.3 mm ² stainless steel terminal	12DE77S	8	7.393.6629	30564-01
Crimping of 12 mm ² bronze terminal	12DE85S	12	7.393.6628	30560-01
Crimping of 35 mm ² bronze terminal	12DE97	14	7.393.6663	30565-01
Crimping of coperit No.5	12DE100	10	7.393.6611	30349-01

HEXAGONAL DIE SETS FOR SIGNALLING AND TRACTION CURRENT RETURN

EXAMPLE OF APPLICATION	TYPE	CRIMPING WIDTH (mm)	SNCF SYMBOL	DUBUIS PART No.
7.42 mm ² cable: for crimping KUVS lugs	12DE68	18	7.393.6718	30346-01
35 mm ² 750 NE cable: for crimping lugs and sleeves	HMPG35	12	7.393.6547	30221-03
70 mm ² 750 NE cable: for crimping copper and bimetallic sleeves and lugs (copper part)	HMPG70	12	7.393.6546	30223-03
7.42 mm ² – 35 mm ² cable: for crimping MRS sleeves	12DE139MMRS	25	7.393.6567	30211-01
50 and 95 mm ² aluminium cables: for crimping bimetallic lugs and sleeves (aluminium part)	12DE173	14	7.393.6712	30353-01
185 mm ² 750 NE cable: for crimping lugs and sleeves	HMPG185	12	7.393.6545	30237-03
150 mm ² aluminium cable: for crimping bimetallic lugs and sleeves (aluminium part)	12DE215	17		30356
240 mm ² rigid copper cable: for crimping CMS 240/12 lugs	12DE215/240	12		30228-03
185 mm ² 750 NE cable: for crimping bimetallic sleeves (copper part)	12DE220	12		30568-01
240 mm ² flexible copper cable: for crimping CMS 240S/12 lugs	12DE230/240S	12		30229-04
240 mm ² aluminium cable: for crimping bimetallic lugs and sleeves (aluminium part)	12DE268	17	7.393.6711	30569-01
240 or 262 mm ² copper cable: jumper clamp fitting or terminal clamp	12DE290	14		30362
25 mm ² flexible cable: for crimping on core of cable terminal LK25F/12	ECO-EGU25	10/06	0.393.1150	30747-03
95 mm ² flexible cable: for crimping on core of cable terminal LK95F/12	ECO95	12	0.393.1152	30717-03
95 mm ² flexible cable: for crimping on insulation of cable terminal LK95F/12	EGU95	14	0.393.1151	30718-03
185 mm ² flexible cable: for crimping on core of cable terminal LK185F/12	ECO185	14	0.393.1149	30744-03
185 mm ² flexible cable: for crimping on insulation of cable terminal LK185F/12	EGU185	14	0.393.1148	30745-03

CRIMPING DIE SETS

C130 NEO – XC130 NEO – BPP130



DIE SETS FOR HEXAGONAL CRIMPING – ACCORDING TO STANDARD NFC 20.130

APPLICATION	LUG SECTION (mm ²)	CRIMPING WIDTH (mm)	NUMBER OF CRIMPS	PART No.
Copper tubular sleeves and lugs to be crimped on copper cable	6	9	1	80414-01
	10	9	1	30218-01
	16	9	1	30219-01
	25	9	1	30220-01
	35	12	1	30221-03
	50	12	1	30222-01
	70	12	1	30223-03
	95	12	1	30224-01
	120	12	1	30235-01
	150	12	1	30236-01
	185	12	1	30237-03
	240	12	2	30228-03
	300	12	2	30229-04
	400*	9	3	30452-01

* With tool and head, stroke 32, 38 or 44 only

DIE SETS FOR CRIMPING "C" CONNECTORS

TYPE	CABLE SECTION (mm ²)	CRIMPING WIDTH (mm)	CRIMPING SHAPE	SNCF SYMBOL	DUBUIS PART No.
C 25/25	25 – 25	25	Hexagonal	-	30211-01
C 70/25	70 – 25	12	Hexagonal	-	30561
C 70/70 (12DX255)	70 – 70	18	Hexagonal	0.393.1146	30562
U13DC185	185 – 98	5	Round	0.393.1147	30781

CRIMPING DIE SETS

C130 NEO – XC130 NEO – BPP130



DIE SETS FOR HEXAGONAL CRIMPING – ACCORDING TO STANDARD C63-061 (B)

APPLICATION	TYPE	SECTION	CRIMPING WIDTH (mm)	PART No.	CRIMPING WIDTH (mm)	PART No.
Industrial bimetallic lugs (on aluminium part)	E 140	35	9	30578	18	80387
	E 140	50	9	30578	18	80387
	E 173	70	9	30579	18	80388
	E 173	95	9	30579	18	80388
	E 173	120	9	30579	18	80388
	E 235	150	9	30636	18	30358
	E 235	185	9	30636	18	30358
	E 235	240	9	30636	18	30358
	E 260	300	9	80386	18	xx

DIE SETS FOR HEXAGONAL CRIMPING OF SLEEVES – ACCORDING TO EDF SPECIFICATIONS

TYPE	APPLICATION AND SECTION (mm ²)				SLEEVES	CRIMPING WIDTH (mm)	PART No.
	STANDARD SLEEVES		ACSR SLEEVES				
	COPPER	ALUMINIUM	STEEL	ALUMINIUM			
E 54	7.07				Bare	18	80389
E 54			17.8/22/27.8/34.4/43.1		Bare	10	30345
E 68	9.9/10.8/12.56				Bare	18	30346
E 72	12.4/14.1/15.9/19,63		37.7/54.6/69.3/88		Bare	10	30347
E 83	17.8/22/27.6				Bare	18	30348
E 100	28.25/29.3/38.2/38.46	22			Bare	18	80390
E 100			58.9/80		Bare	10	30349
E 120	48.3	34.4			Bare	18	80152
E 120			59.7/75.5/116.2/147.1	17.8/22/27.8/34.4	Bare	9	30351
E 140		43.1/54.6		37.7/43.1/54.6	Bare	15	30352
E 173	59.7/74.9/93.3	75.5/93.3		58.9/69.3/80/88	Bare	14	30353
E 210		117		59.7/116.2	Bare	10	30355
E 230		148		75.5/147.1	Bare	10	30357
E 250*				182	Bare	5	80453
E 280**		228			Bare	5	30360
E140					Insulated	9	30578
E173						9	30579
E205						9	80451
E215		Depending on sleeves				9	30580
E260						9	80386
E280						9	30360-01
E300						9	30363

* With tool and head, stroke 32 or 38 or 44 only – ** With tool and head, stroke 38 or 44 only

CRIMPING DIE SETS

H130 NEO – XH130 NEO – BPP130U



Opening dies



Indent holder PP130



Indents

TOOLING FOR CONNECTION BY DEEP INDENTING OF INSULATED ALUMINIUM CABLES (EDF SPECIFICATION)

LUG SECTIONS	PART NUMBERS									
	OPENING DIES				INDENT-HOLDER		INDENTORS			
	FOR LUGS AND TERMINALS		FOR JUNCTION CONNECTORS							
16										
25	MC0E	30861		MJ0E	30865	PP130	30842	0E	30392	
35										
50										
70	MC1E	30862		MJ1E	30866	PP130	30842	1E	30393	
95										
120										
150	MC2E	30863		MJ2E	30867	PP130	30842	2E	30394	
185										
240	MC4E	30864		MJ4E	30868	PP130	30842	4E	30395	

- Crimping die sets for the 130 kN product line, which can be used in these tools with the A12D2 adaptor (see pages 34, 35 and 36).

CASE



DIMENSIONS (mm)

450 × 370 × 110

WEIGHT (empty)

1.220 kg

PART No.








30875

Storage case for deep-indent opening dies, which can contain MJE and MCE dies and indents.

CRIMPING DIES FOR SUBSTATIONS

	XH220	C130 NEO XC130 NEO BPP130	H130 NEO XH130 NEO BPP130U
TOOLS			
DIES			

SUBSTATION CRIMPING

LUGS, CONNECTORS OR SLEEVES		CRIMPING DIES 13 T		
TYPE	SYMBOL No.	TYPE	PART No.	SYMBOL No.
 TINNED COPPER FLAT LUG 95 MM ² MR-TN-95		section 95 mm ²	30224-01	
TINNED COPPER FLAT LUG CDCT 116-12		section 120 mm ²	30235-01	
 COPPER ROUND LUG E150 ² SIMEL 3309B DPD7 70		12DE170	30561	
 TINNED COPPER FLAT LUG 185 MM ² 12-14 AND 16		HMPG185	30237-03	7.393.6545
TINNED COPPER FLAT LUG 185 MM ² CS 185	7.952.0775	HMPG185	30237-03	7.393.6545
 TINNED COPPER FLAT LUG 185 MM ² CSG185+	7.952.0740	HMPG185	30237-03	7.393.6545
 BIMETALLIC LUG FOR CABLE 240 MM ² ALUMINIUM CAU-240		12DE268	30569-01	7.393.6711
 TINNED COPPER FLAT LUG 300 MM ² MR 300		12DE268	30569-01	7.393.6711
 TINNED COPPER FLAT LUG 400 MM ² MR 400		12DE190	30362	

► Non-exhaustive list. Please contact us for any other connector.

CRIMPING DIES FOR SUBSTATIONS

DIES











TOOL
XH220



SUBSTATION CRIMPING

LUGS, CONNECTORS OR SLEEVES

CRIMPING DIES 22 T

TYPE	SYMBOL No.	TYPE	PART No.	SYMBOL No.
 TINNED COPPER FLAT LUG 400 MM ² MR 400		SH29	64123 (fixed) 64122 (moveable)	0.392.6521 0392.6503
 COPPER FLAT LUG 400 MM ² INSULATED H32	7.880.4042	SH32	64121 (fixed) 64120 (moveable)	0.392.6522 0.392.6504
 COPPER FLAT LUG 400 MM ² SIMEL 4496A (32) XD7 400 2D16		SH32	64121 (fixed) 64120 (moveable)	0.392.6522 0.392.6504
 ALUMINIUM-COPPER FLAT LUG 400 MM ²		SH36	64119 (fixed) 64118 (moveable)	0.392.6523 0.392.6505
 "C" CONNECTOR AMP (SIMEL) TINNED COPPER C120E RDCT 116-75/116 E150 CWV AMP5309B		SV31	77420 (fixed) 77419 (moveable)	
 "C" CONNECTOR TINNED COPPER C75E		SV31	77420 (fixed) 77419 (moveable)	
 "C" CONNECTOR COPPER C120E		SV31	77420 (fixed) 77419 (moveable)	
 "C" CONNECTOR TINNED COPPER SIMEL C185-C185				

► Non-exhaustive list. Please contact us for any other connector.

CRIMPING DIE SETS XH220 – XH250R



► Crimping recommendations in compliance with NLD 241 dated the 09/10/2014

GUIDE DIE SETS FOR HEXAGONAL CRIMPING

TYPE	PART No.	SNCF SYMBOL	APPLICATIONS
SH 16	64107	0.392.6531	- Cable Copper 26 mm ² : Half-clamp for ribbed wire - Cable Bz 65.4 – Repair fitting - Cable Al/Steel 228/93.3: Junction sleeve (steel part) + termination lug
SH 17,5	64105	0.392.6532	- Cable Al/Steel 288: Junction sleeve (steel part) + termination lug
SH 28,5	64117	0.392.6525	- Cable Al 238 - Al/Steel 228/93.3 : Jonction sleeve (Al part) + termination lug - Cable Al 228/238/288/336: Connecting part, termination lug made from Al or bimetal - Cable Al 228: Bypass connection, Al jumper clamp fitting, connecting part, jumper clamp bimetal (Al part)
SH 32,5	64115	0.392.6527	- Cable Al/Steel 336/288: Junction sleeve (Al part) + termination lug

DIE SETS FOR HEXAGONAL CRIMPING

TYPE	PART No.	SNCF SYMBOL	APPLICATIONS
SH 20,4	64126 64127	0.392.6501 0.392.6519	- Round wire copper 104.5/145.8 - Cable Bz 35/65 bare - Ribbed Copper wire 107+120: Junction sleeve + termination lug - Cable Copper 104.5/145.8/147/164: Termination lug, bypass connection, bimetal jumper clamp (Copper) - Cable Copper 104.5/147/164 and 185 insulated: Jumper clamp Copper or Aluminium, connecting part, termination lug - Cable Copper 104.5/145.8/147/164/185: Half-clamp round wire or ribbed wire - Cable Copper 147/164: ATE fitting - Cable Bz 116.2: Repair fitting
SH 25	64124 64125	0.392.6502 0.392.6520	- Cable Bz 35/65/116 bare – Bz 35/65 protected – Al 188: Junction sleeve + termination lug - Cable Bz 65 bare - Bz 35/65 protected: Anchor sleeve - Rod Copper D18: Termination lug, bypass connection or rod copper jumper clamp - Cable Al Steel 93.3: Repair fitting
SH 29	64122 64123	0.392.6503 0.392.6521	- Cable Copper 262: Junction sleeve, termination lug - Cable Copper 240/262: Bypass connection, jumper clamp, termination lug - Cable Copper 240: Jumper clamp Copper, connecting part - Cable Copper 240/261.5: Half-clamp round wire - Cable Al/Steel 178/228/288: Repair fitting
SH 32	64120 64121	0.392.6504 0.392.6522	- Cable BZ 116 bare or protected: Junction sleeve, termination lug, anchor sleeve - Cable Copper 185: Termination lug - Cable Copper 400 mm ² insulated: Termination lug, jumper clamp copper, connecting part
SH 34,5	64112 64113	0.392.6510 0.392.6528	- Cable Al 375.6: Connecting part, termination lug made from Al or bimetal, bypass connection, jumper clamp Al or bimetal
SH 40	64110 64111	0.392.6511 0.392.6529	- Cable Al 475: Connecting part, termination lug made from Al or bimetal, bypass connection Al
SH 44	64108 64109	0.392.6512 0.392.6530	- Rod Al D30: Bypass connection Al

STANLEY

DUBUIS

www.dubuis.com

CE MADE IN FRANCE

CRIMPING DIE SETS XH220 – XH250R



REINFORCED DIE SETS FOR HEXAGONAL CRIMPING

TYPE	MOVEABLE + FIXED DIES			APPLICATIONS
	SNCF SYMBOL	PART No.	NUMBER OF CRIMPS	
25DE77S	0.392.6545	64151	3	- Dropper spliced end stainless steel 9.3 mm ²
25DE85S	0.392.6540	64100	2	- Dropper spliced end bronze 12 mm ²
25DE100	0.392.6550	64147	2	- Splice type "Coperit" No. 5



DIES FOR OVAL CRIMPING

TYPE	MOVEABLE DIE		FIXED DIE		APPLICATIONS
	SNCF SYMBOL	PART No.	SNCF SYMBOL	PART No.	
SV 29	0.392.6535	64130	0.392.6541	64131	- Bypass connection Bz 65/ Cu 26
SV 31	-	77419	-	77420	- C-connector 116-75 or 116-116
SV 42	0.392.6536	64132	0.392.6542	64133	- Bypass connection Bz 65/ Cu 104.5 or 145.8 - Bypass connection Bz 65/ Cu 147 or 164 - Bypass connection Bz 116/ Cu 147 or 164



DIES FOR DE-CRIMPING OF CONNECTORS

TYPE	MOVEABLE DIE		FIXED DIE (blades)			APPLICATIONS
	SNCF SYMBOL	PART No.	SNCF SYMBOL	PART No.	PART No.	
-	0.392.6554	DV29 64138	0.392.6559	DV13 64139	64139	- Bypass connection Bz 65/ Cu 26
-	0.392.6555	DV42 64140	0.392.6559	DV13 64139	64139	- Bypass connection Bz 65/ Cu 104.5 or 145.8 - Bypass connection Bz 65/ Cu 147 or 164
-	0.392.6555	DV42 64140	0.392.6560	DV18 64141	64141	- PP 116/ Cu 104,5 or 147
-	0.392.6556	DV52 64142	0.392.6560	DV18 64141	64141	- PP 116/ Cu 240
-	0.392.6556	DV52 64142	0.392.6561	DV24 64143	64143	- Cu 262/ 104.5 or 147 or 164 or 240 or 262



MILWAUKEE M18™ CABLE STRIPPER

M18BCS-0C

- Protects against Knife Injuries on the Job
- Depth Gauge Adjustment up to 3" for Accurate, Consistent Strips
- Quick-Change Bushing System for Faster Stripping Across Sizes
- Variable Speed Trigger for Controlled Strips
- Compatible with All M18™ Batteries



MILWAUKEE M12 FUEL™ MULTI TOOL

ATC-M18BMT-0

- Tool-free blade change for fast accessory changes
- LED light for visibility in low-light situations
- Vibration Dampening Technology for low full tool vibration
- Oscillation angle of 3.9° for fast cuts
- OPM: 10,000 - 20,000
- Oscillation Angle: 3.9°
- Speed Settings: 12



DEWALT DCF887N-XE 18V XR LI-ION CORDLESS BRUSHLESS IMPACT DRIVER

ATM-DCF887-XE

- High power Brushless motor outputting up to 205Nm of torque ensures heavy applications are completed quickly
- Application control is achieved through 3 motor speeds and torque settings including PrecisionDrive
- PrecisionDrive mode offers additional control in screwdriving applications to avoid material and fastener damage
- Super lightweight and compact the tool is very comfortable to use and fits in small spaces
- 3x LED "Halo" light ring offers excellent workpiece lighting
- 1/4" (6.35mm) 'drop in' bit holder allows for quick, one handed fitment

SPECIFICATIONS

- Voltage: 18V
- No load speed:
- Speed 1: 0-1000rpm
- Speed 2: 0-2800rpm
- Speed 3: 0-3250rpm
- Max torque: 205Nm
- Halo 3-Led lights
- Drop & load bit holder
- Weight: 1.3kg



M18 FUEL™ 13MM HAMMER DRILL/DRIVER (TOOL ONLY)

ATC-M18FPD2-0

- Maximum power.
- LED on foot of tool for better lighting in dark spaces.
- Shorter length for access into tight spaces and reduced fatigue.
- Fast speeds under heavy load.
- POWERSTATE™ Brushless Motor.



M18 FUEL™ 1/2" IMPACT WRENCH WITH PIN DETENT (TOOL ONLY)

ATC-M18FIWP12-0

- Delivers 300Nm of torque in a compact design.
- REDLINK PLUS Electronic Intelligence allows the operator to choose between 4 fastening modes
- This FUEL 1/2" Compact Impact Wrench utilises a pin detent design for maximum socket retention.



M18 FUEL™ 125MM (5") ANGLE GRINDER KIT

ATC-M18CAG125XPD-502C

- What's Included
 - M18 FUEL™ 125mm (5") Angle Grinder (Tool only)(2) M18™ 5.0Ah
 - REDLITHIUM™-ION Battery
 - M12™ & M18™ Rapid Charger



MILWAUKEE 12/18V MULTI VOLTAGE RAPID CHARGER

ATC-M12-18FC

- Charges batteries up to 40% faster.
- Charges all M12™ and M18™ batteries.
- Sequential charging: automatically charges the second inserted pack once the first pack is fully charged.
- REDLINK™ Intelligence: charger communicates with the battery pack to ensure optimum performance and extend life



M18 FUEL™ IMPACT WRENCH WITH PIN DETENT (TOOL ONLY)

ATC-M18ONEIWP12-0

- MILWAUKEE® POWERSTATE™ Brushless Motor provides more power, more run-time, and longer life.
- REDLINK™ PLUS Electronic Intelligence enables advanced communication between your batteries and tools, allowing for unmatched levels of performance, protection, and productivity.
- Fastening Torque: 300Nm
- Length: 155mm
- Voltage: 18V



M12™ CORDLESS 300MM CABLE CUTTER (TOOL ONLY)

ATC-M12CC-0

- Powerful jaws cut effortlessly through 300mm² XLPE copper and aluminium
- Breakthrough ratcheting mechanism: Fits into tight panels for more effective cutting
- Auto release lever: Cut, reload and quickly repeat for maximum productivity
- Built-in LED light: Illuminates the line of cut



M18™ JOBSITE RADIO

ATC-M18JSR-0

- High performance audio system with dual speakers and passive radiators delivers loud, clear sound with deep accurate bass.
- Durable, portable, stackable design features shock absorbing end caps and metal speaker grills that protect from drops and other harmful jobsite conditions.
- Best-in-class reception accuracy and signal quality.
- Integrated handles allow for easy transport and storage in a wide range of environments.
- Up to 12hrs run time with an M18™ 5.0Ah battery.



MILWAUKEE M12B6 12V 6.0AH LI-ION CORDLESS RED LITHIUM

ATC-M12B6

- Voltage: 12V
- Amp Hour: 6Ah
- Li-Ion
- Red Lithium technology
- All Weather performance



M18™ FORCE LOGIC™ 400MM UTILITY CRIMPER (TOOL ONLY)

ATC-M18HCCT109/42-0C

- PFM™ (Predictive Force Monitoring) with auto complete ensures full pressure
- Pre-crimp battery check automatically ensures enough charge to complete each crimp
- 350° rotating head provides easy access in tight spaces
 - Output Force: 109kN
 - Capacity: 400mm² Cu / 300mm² Al
 - Weight: 5.2kg (w/o battery)



M18™ FORCE LOGIC™ 300MM CRIMPER (TOOL ONLY)

ATC-M18HCCT-0C

- Revolutionary jaw hold connector for instant alignment
- Fully balanced for reduced fatigue
- Operates easily in crowded panels
- Predictive Force Monitoring: Industry's first adaptive pressure control system
 - Force: 6 Tons
 - Capacity: 300mm² Cu / 300mm² Al
 - Weight: 2.1Kg



M18 FUEL™ SAWZALL™ RECIPROCATING SAW

ATC-M18CSX-0

- Patented gear protecting clutch: extends gear and motor life by absorbing high impact forces caused by sudden blade lock-ups
- QUIK-LOK™ Universal clamp accepts all reciprocating saw blades with a concealed, keyless clamp system



M12™ 1/4" HEX IMPACT DRIVER (TOOL ONLY)

ATC-M12BID-0

- Individual battery cell monitoring optimises tool run time and ensures long term pack durability.
- On-Board Fuel Gauge displays remaining run-time.
- Built-in LED light illuminates work surface.
- Belt hook for easy work belt storage.



DEWALT DCF887N-XE 18V XR LI-ION CORDLESS BRUSHLESS IMPACT DRIVER

ATM-DCF887-XE

- High power Brushless motor outputting up to 205Nm of torque ensures heavy applications are completed quickly
- Application control is achieved through 3 motor speeds and torque settings including PrecisionDrive
- PrecisionDrive mode offers additional control in screwdriving applications to avoid material and fastener damage
- Super lightweight and compact the tool is very comfortable to use and fits in small spaces
- 3x LED "Halo" light ring offers excellent workpiece lighting
- 1/4" (6.35mm) 'drop in' bit holder allows for quick, one handed fitment

SPECIFICATIONS

- Voltage: 18V
- No load speed:
- Speed 1: 0-1000rpm
- Speed 2: 0-2800rpm
- Speed 3: 0-3250rpm
- Max torque: 205Nm
- Halo 3-Led lights
- Drop & load bit holder
- Weight: 1.3kg



MILWAUKEE FASTBACK™ FOLDING UTILITY KNIFE

ATC-48221502

- Press and Flip Opening
- 4 blade storage
- All metal body
- Quick blade change
- Gut hook



CUSTOM CONDUIT CLEANER

- Custom Assembly
- PVC Outer
-



CRESCENT 2PC MICRO CUTTER AND PLIER SET

ATM-S2KS5N

- Micro Cutter and Plier Set
- Mini Plier: 102mm/4" ~ Tighter grip less slip
- Wire Cutter: 102mm/4" ~ Low profile flush cut



M18 FUEL™ 13MM HAMMER DRILL/DRIVER (TOOL ONLY)

ATC-M18FPD2-0

- Maximum power.
- LED on foot of tool for better lighting in dark spaces.
- Shorter length for access into tight spaces and reduced fatigue.
- Fast speeds under heavy load.
- POWERSTATE™ Brushless Motor.



M18 FUEL™ 1/2" IMPACT WRENCH WITH PIN DETENT (TOOL ONLY)

ATC-M18FIWP12-0

- Delivers 300Nm of torque in a compact design.
- REDLINK PLUS Electronic Intelligence allows the operator to choose between 4 fastening modes
- This FUEL 1/2" Compact Impact Wrench utilises a pin detent design for maximum socket retention.



M18 ONE-KEY SDS MAX ROTARY HAMMER

ATC-M18FHM-0

- 11J of Impact Energy for increased productivity in heavy duty applications
- POWERSTATE Brushless Motor for more power, run-time and longer life
- REDLINK PLUS intelligence tool technology ensures maximum rotary drill performance and protects it from overload, overheating, and over discharge

M18 FUEL™ 13MM HAMMER DRILL/DRIVER KIT

ATC-M18FPD2-502C

WHAT'S INCLUDED

- M18 FUEL™ 13mm Hammer Drill/Driver (Tool only)(2)
- M18™ REDLITHIUM™-ION 5.0Ah Battery
- M12™ & M18™ Rapid Charger



M18 FUEL™ 1/4" HEX IMPACT DRIVER (TOOL ONLY)

ATC-M18FID2-0

- Fast driving speeds and maximum power in a compact design.
- Up to 226Nm of torque
- 4-Mode DRIVE CONTROL



M18 FUEL™ 7/16" HEX UTILITY IMPACTING DRILL (TOOL ONLY)

ATC-M18CHIDH716-0

- 7/16" Hex Quick-Connect for fast, secure insertion of augers and socket adapters.
- Variable speed trigger.
- MILWAUKEE® POWERSTATE™ Brushless Motor provides more power, more run-time, and longer life.
- 677Nm Max Torque



M12™ 1/4" HEX IMPACT DRIVER (TOOL ONLY)

ATC-M12BID-0

- Individual battery cell monitoring optimises tool run time and ensures long term pack durability.
- On-Board Fuel Gauge displays remaining run-time.
- Built-in LED light illuminates work surface.
- Belt hook for easy work belt storage.



M18 FUEL™ 1/4" HEX IMPACT DRIVER KIT

ATC-M18FID2-502C

- Fast driving speed.
- Most compact: only 116mm in length.
- Maximum power.
- Included:
 - M18 FUEL™ 1/4" Hex Impact Driver (Tool Only) [M18FID2-0]
 - Belt Clip
 - Bit Holder
 - 2 x M18™ 5.0Ah REDLITHIUM™-ION Battery [M18B5]
 - M18™ & M12™ Rapid Charger [M12-18FC]
 - Carrying Case

M18™ CORDLESS MULTI-TOOL (TOOL ONLY)



ATC-M18BMT-0

- Tool free blade changing for faster changes and no tools to misplace
- Unique cutting depth stop adaptor to prevent over-cutting in material
- 12 variable speed settings allows quick completion of professional applications into materials such as metal, wood and plastic
- Bright LED light for workspace illumination



ABN 44 071 568 771

"A-Z Product Solutions for Trade and Industry"

sales@all-trades.com.au

www.all-trades.com.au

SIEVERT RANGE

6M LPG HOSE

Sievert high pressure hoses conform to the EN 559/ISO 3821 standards. Sievert hoses are also extra frost resistant and can be used in temperatures down to -30°C .



4M LPG HOSE

Sievert high pressure hoses conform to the EN 559/ISO 3821 standards. Sievert hoses are also extra frost resistant and can be used in temperatures down to -30°C .



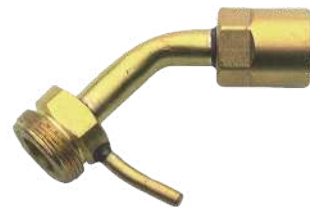
28MM BRASS BURNER

The Sievert Pro Series Burner has a 28mm diameter and is made from high quality brass. This is a standard burner with brush-type flame for all kinds of soft soldering and small heating applications.



70MM BRASS NECK TUBE

70mm Length



SPECIALIST TOOLS



Sydney Office
11/5 Hudson Ave
Castle Hill NSW 2154
Ph: 02 8850 2700



Melbourne Office
4/5 Kelletts Rd
Rowville VIC 3178
Ph: 03 9780 4850

Lincoln Hoist[®]

The Original. Since 1949.[®]



sales@all-trades.com.au
www.all-trades.com.au



**Now with
RFID!**

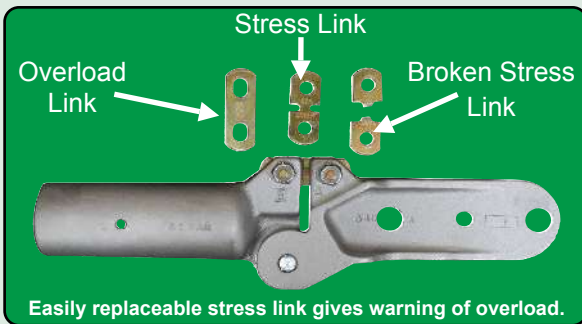
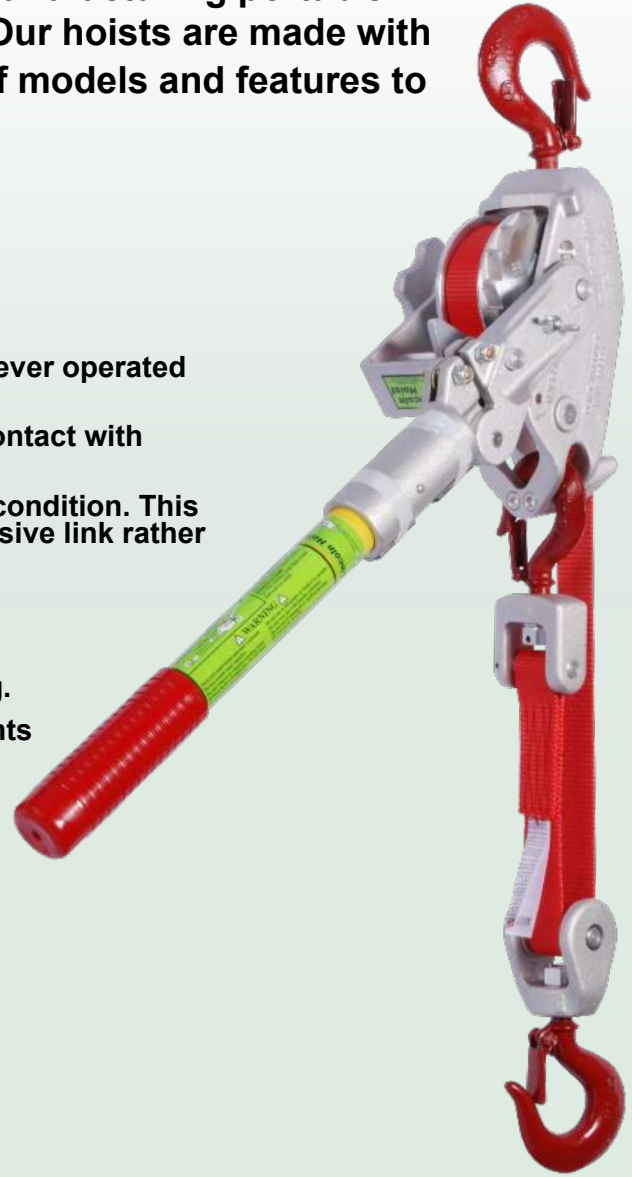
**Made in USA for
over 65 Years!**



Lincoln Hoist® has been designing and manufacturing portable ratchet lever hoists in the USA for over 65 years. Our hoists are made with unmatched quality and durability. With a variety of models and features to choose from, we make the right tool for the job.

Web Hoist Features:

- Made in the USA.
- Models from 900 to 1800 kg capacity.
- Load tested to 125% of rated capacity.
- Meets or exceeds ASME B30.21 specification for manual lever operated hoists.
- Double flanged drum - Keeps web strap from coming in contact with ratchet teeth.
- Breakable stress link - Alerts the operator to an overload condition. This Lincoln invention enables field replacement of an inexpensive link rather than a complete fiberglass handle.
- Interlocking pawl mechanism - No brakes to slip.
- Maintenance free bearings are lubed for life.
- Open frame construction for easy inspection and cleaning.
- Four hook styles designed to meet application requirements and work practice standards.
- USA made 360° swivel hooks are drop forged, heat treated steel.



Standard Handle Web Hoist Model Specifications

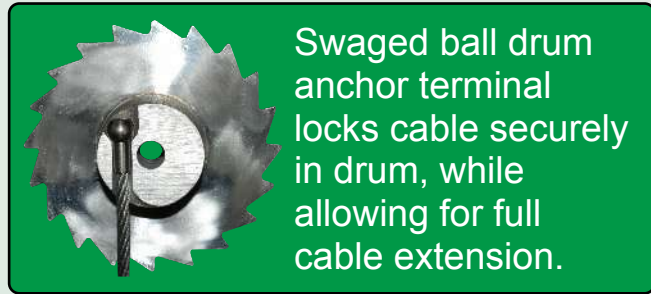
Model #	Frame Size	Single Line			Double Line			Strap Length (cm)	Handle Length (cm)	Hoist Weight (kg.)
		Cap. (kg)	Single Lifting Distance (cm)		Cap. (kg)	Double Lifting Distance (cm)				
			Min	Max		Min	Max			
2W10-ANZ	Small	450	45.7	332.7	900	58.4	188	304.8	76.2	4.7
3W08-ANZ	Small	680	45.7	271.8	1360	61	160	243.8	76.2	4.7
3W15-ANZ	Medium	680	50.8	482.6	1360	81.3	271.8	457.2	76.2	6.4
4W12-ANZ	Medium	900	50.8	396.2	1800	76.2	228.6	365.8	91.4	7
30W08-ANZ	Convertible	680	54.6	276.9	1360	57.2	160	243.8	76.2	4.5

Short Handle Web Hoist Model Specifications

Model #	Frame Size	Single Line			Double Line			Strap Length (cm)	Handle Length (cm)	Hoist Weight (kg.)
		Cap. (kg)	Single Pull Distance (cm)		Cap. (kg)	Double Pull Distance (cm)				
			Min	Max		Min	Max			
2W10-1300-ANZ	Small	450	45.7	332.7	900	58.4	188	304.8	58.4	4.9
3W08-1300-ANZ	Small	680	45.7	271.8	1360	61	160	243.8	58.4	4.9
3W15-1300-ANZ	Medium	680	50.8	482.6	1360	81.3	271.8	457.2	58.4	6.4
30W08-1300-ANZ	Convertible	680	54.6	276.9	1360	57.2	160	243.8	58.4	4.5

Cable Hoist Features:

- Made in the USA.
- Models from 330 to 2200 kg capacity.
- Load tested to 125% of rated capacity.
- Handle bends to alert operator of overload.
- Interlocking pawl mechanism - no brakes to slip.
- Quick release allows cable to be pulled out freely when rigging.
- Maintenance free bearings are lubed for life.
- Reversible handle allows pulling in optimum position.
- Open frame construction for easy inspection and cleaning.
- USA made 360° swivel hooks are drop forged, heat treated steel.
- Hydraulically crimped copper sleeve for uniform hold.
- All cable stores on drum.

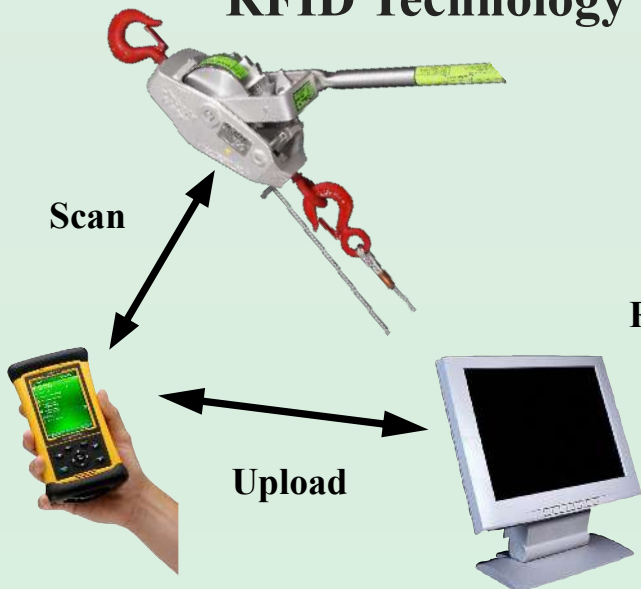


Swaged ball drum anchor terminal locks cable securely in drum, while allowing for full cable extension.

Cable Hoist Model Specifications

Model #	Frame Size	Single Line			Double Line			Cable Length (cm)	Handle Length (cm)	Hoist Weight (kg.)
		Cap. (kg)	Single Lifting Distance (cm)		Cap. (kg)	Double Lifting Distance (cm)				
			Min	Max		Min	Max			
LH 1500-25-ANZ	Small	165	48.3	792.5	330	58.4	419.1	777.2	38.1	3.8
LH 2250-20-ANZ	Small	420	48.3	655.3	790	58.4	350.5	640.1	44.5	4.2
LH 3000-10-ANZ	Small	565	48.3	365.8	1130	58.4	205.7	350.5	50.8	4
LH 3000-30-ANZ	Medium	565	53.3	983	1130	73.7	520.7	960.1	63.5	6.2
LH 4000-20-ANZ	Medium	725	53.3	690.9	1290	73.7	345.4	670.5	76.2	7
LH 6000-15-ANZ	Large	1100	63.5	569	2200	87.6	320	548.6	139.7	15.4

RFID Technology



Schedule : Periodic Insp/Cert Scheduling				
Certifications Inspections Inspections and Certifications Work Orders				
1 Items Not Yet Due for Inspection				
1 Items Due for Inspection Within 30 Days				
2 Items OverDue for Inspection				
Item	SerialNum	Asset Number	Owner	Next Insp. Date
LH 6000-15 Ratchet Hoist 3 Ton		98765	Tip Top Chemicals	2011-02-01
4020110002 Ratchet Hoist 1 Ton		987688	Tip Top Chemicals	2011-02-01
6S1600-LSH Ratchet Hoist 1600 Kg		987443	Tip Top Chemicals	2011-04-20
1500-25LH1 Ratchet Hoist		9874461	Tip Top Chemicals	2011-06-01

First Prev Next Last Records: 1 to 4 of 4 4 Rows Found

Benefits:

- Location tracking
- Instant & accurate on-site ID
- Inspection history
- Maintenance schedule
- Certificate & report printing

RFID Readers



30W08 Convertible Model

The 30W08 is designed to be quickly changed from single to double rigged. This way you don't have a block swinging freely on the strap or any extra parts to lose. These models are also available with all the options we offer on our other web strap hoists.



Hook Styles



Standard Latch Hook
US made, 360° swiveling hooks are drop forged, heat treated steel.



"PS" Option Clevis Jaw
Jaw fitting provides absolute attachment, high strength forged steel jaws and screw pins.



"J" Option Self-Locking Hook
Latch is self-locking when the hook is loaded.

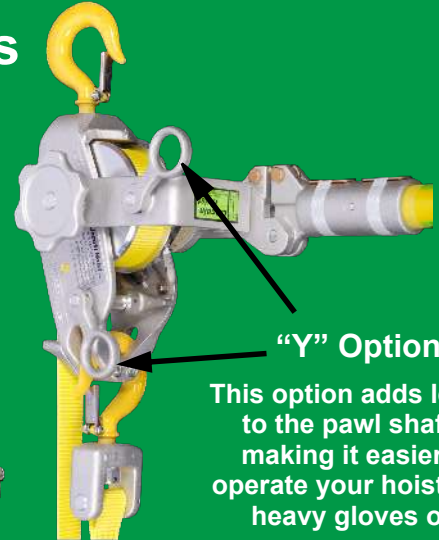
Web Hoist Options



"B" Option
This option adds hot stick rings to the hooks, pawl shafts and handle.



"L" Option Lynch Pin Block
One pin pull to easily disassemble.



"Y" Option
This option adds levers to the pawl shafts, making it easier to operate your hoist with heavy gloves on.



ALL TRADES

"Service, Knowledge & Experience"

ALL TRADES MFG PTY LTD
11/5 Hudson Avenue - Castle Hill, NSW 2154

ALL TRADES MFG PTY LTD
4/5 Kellets Road - Rowville, VIC 3178

sales@all-trades.com.au
www.all-trades.com.au
02/ 8850 2700

Lincoln Hoist®

Mfg. by Lincoln Precision Machining Company
121 Creeper Hill Road, P.O. Box 458, North Grafton, MA 01536
Phone 0011 1 774 551 9000 Fax 0011 1 508 839 4729
Email sales@lincolinhoist.com



WARNING



Overloading & Improper Use Can Result In Injury.

To Avoid Injury:

- Read and understand operators manual.
- Do not exceed working load limit.
- Do not use to lift people or loads over people.
- Use only **Lincoln Hoist®** replacement parts.

For more information please visit us on the web at:
www.LincolnHoist.com



PULLER RATCHET (NGK) (1000KG)

ATM-N1000P

- Webbing Strap
- 10KN
- Comes With:
 - Insulated Handle
 - 2 hooks
- Max Length: 1940mm
- Weight: 3.3Kg



PULLER RATCHET (NGK) (1500KG)

ATM-N1500PEX

- Webbing Strap
- 10KN
- Comes With:
 - Insulated Handle
 - 3 hooks
- Max Length:
 - 1.5m on double pull @ 1500Kg
 - 3m on single pull @ 750Kg