



2021

**CABLE
HAULING
BROCHURE**

"Service, Knowledge, Experience"

ABN 44 071 568 771



Sydney Office
11/5 Hudson Ave
Castle Hill NSW 2154
Ph: 02 8850 2700



Melbourne Office
4/5 Kelletts Rd
Rowville VIC 3178
Ph: 03 9780 4850



www.all-trades.com.au



sales@all-trades.com.au



ABN 44 071 568 771

"A-Z Product Solutions for Trade and Industry"

sales@all-trades.com.au

www.all-trades.com.au

INTRODUCTION

AT ALL TRADES WE PRIDE OURSELVES ON PROVIDING QUALITY SERVICE WITH QUALITY PRODUCTS

Remember if you don't see what you need in this brochure, please make a call to the numbers on the front page, as we may have what you need. If we don't have it, we will get it!

In addition to our cable hauling range, we are also proud to import and distribute:

- Battery and Hand Operated Crimping and cutting equipment used by Utilities and electrical contractors
- Height & Safety equipment (Honeywell, MSA, SALA, FERNO)
- Dewalt & Milwaukee Power Tools
- Quality Tradesman Hand Tools (Sidchrome, Crescent, Stanley, Klein)
- AND MUCH MORE!



Sydney Office
11/5 Hudson Ave
Castle Hill NSW 2154
Ph: 02 8850 2700



Melbourne Office
4/5 Kelleys Rd
Rowville VIC 3178
Ph: 03 9780 4850



RKI GX-3R

ATM-GX-3R GAS DETECTOR

- Simultaneous detection of 4 gases, LEL, O₂, H₂S & CO
- Smallest / Lightest four gas monitor on the market 70 H x 70 W x 25 D mm, 130g
- Dual audible alarm ports (95 db @ 30 cm)
- 3 visual alarm LED's



ALTAIR 4X GAS DETECTOR

MSA-10110447

- **MSA-10110447K**
 - Gas Detector
 - Charger
 - Cal Gas
 - Regulator
 - Carry Case
- **MSA_10110447K-D**
 - (Above +) Probe
 - ASP Pump



GAS ALERT MICROCLIP 4

ATM-GASALERTMICROCLIPXL-KIT

- Aspirator pump
- Filter kit
- 240v & DC Vehicle Charger
- Leather Carry Case



BI-FOLD MANHOLE GUARD

LIN-AT50

- Manhole Guard (Bi-Fold)
- Telstra Approved
- (Without Tent "A" Frame)
- 1430 x 1430 x 900mm
 - Folds down to: 750 x 200 x 900mm
- Yellow | Weight: 12kg



MANHOLE GUARD

LIN-AT48

- Manhole Guard
- Telstra Approved
- (Without Tent "A" Frame)
- 1460 x 1410 x 930mm
- Yellow | Weight: 12kg



MANHOLE GUARD W/TENT FRAME

LIN-AT45

- Manhole Guard
- Telstra Approved
- ("With Tent "A" Frame)
- 1430 x 1430 x 900mm
- Yellow
- Compatible with LIN-TENT01 (Window + Carry Bag)



CAT IV CABLE LOCATOR

MAC-CAT4PLUSNDL

- CAT 4+ Receiver
- GENNY4 Transmitter
- Direct Connect Leads
- 100mm Clamp
- Carry Bag



CABLE LOCATOR

ATM-21893

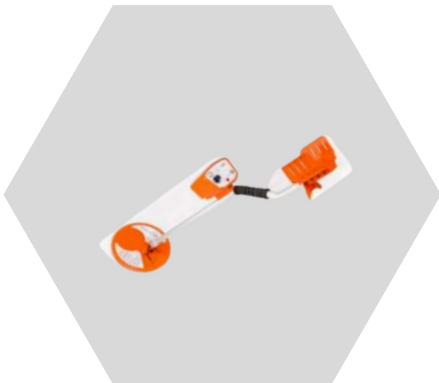
- Trace & Frequency from 10Hz to 35kHz
- Proximity signal and signal strength help work through difficult locates
- Target Line and Guidance Arrows



PIT LID LOCATOR

MAC-RD312

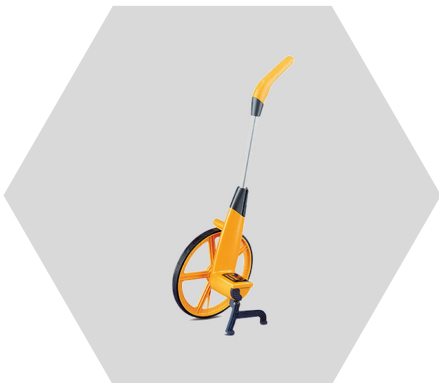
- Gain can be manual or auto.
- Weatherproof to IP54
- Weight: 1kg
- 30 Hour run time (9V battery)
- It is robustly constructed from high impact ABS and aluminium



PIT LID LOCATOR

ADA300A

- Low cost
- High performance
- Proven to locate 5mm ferrite steel to a depth of 500mm
- Headphone socket



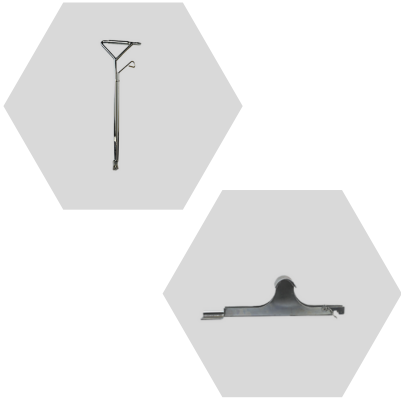
MEASURING WHEELS

ATM-PSMW48MCLB

- Professional Quality
- Gear Driven HD

WHI-TRU5500-E

- Mechanical
- Button Reset
- Lightweight
- Metre Reading



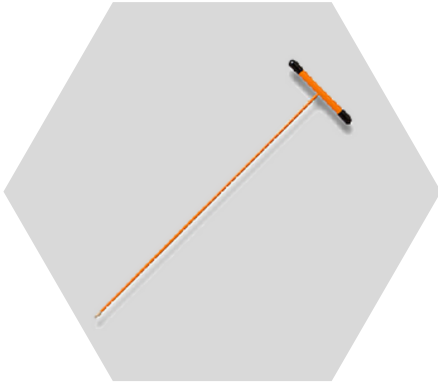
PIT KEYS & SEAL BREAKERS

VAN-PKEY

- Designed to lift Telstra style manhole lids and comes with a safety lock

VAN-SB

- Seal breaker to suit Telstra style pit key



NON-CONDUCTIVE SOIL PROBES

JP-N76

- Available in 1.2 & 1.5 metre sizes
- All rated at 1000V

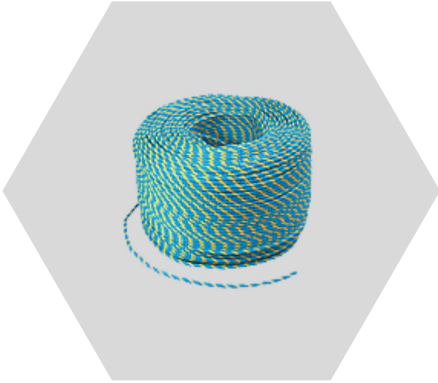


GATIC PIT LID KEYS & KITS

VAN-PKSET

- 2x Long Handle
- 1x Short Handle Seal Breaker
- 2x Roll Bars
- Spanner
- Scraper
- Carry Bag

EYE SPLICING AVAILABLE UPON REQUEST



PARAMATTA ROPE

VAN-PAR400

- Manufactured to the highest standards
- Conduit back rope used in cable hauling situations
- Standard centre feed coil size is 400m x 6mm. Tensile strength of 595kg.
- Coil nominal weight 7kg



JETLINE

VAN-03JET

- Blows easily and ideal for smaller conduits.
- 3mm drawline has a tensile strength of 80kg.
- Blows or rods easily and is ideal for smaller conduits.
- Polypropylene 3 strand construction
- 1000m length

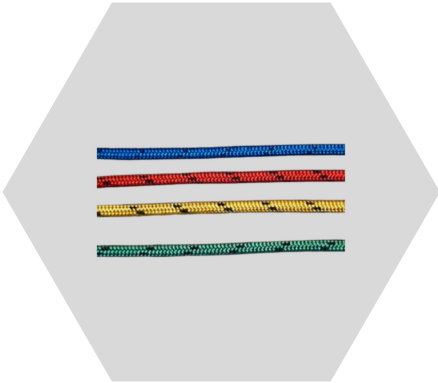


AQUATEC

DON-20-AQUA (6.9 TONNE TENSILE)

DON-24-AQUA (9.9 TONNE TENSILE)

- Abrasion resistance
- High strength to weight ratio
- Shock load resistant
- UV resistant with excellent weathering properties
- Available in more sizes enquire for more details



EXOTIC & SPECTRA BRAIDS

FIB-O SPECTRA

- FIB-06SPECTRA – 6MM SPECTRA BRAID – 1800KG
- FIB-08SPECTRA – 8MM SPECTRA BRAID - 3300KG
- FIB-10SPECTRA – 10MM SPECTRA BRAID - 4500KG
- FIB-12SPECTRA – 12MM SPECTRA BRAID – 5400KG

Preferred for it's high strength and low stretch. Optimal for high stress cable hauling duties.

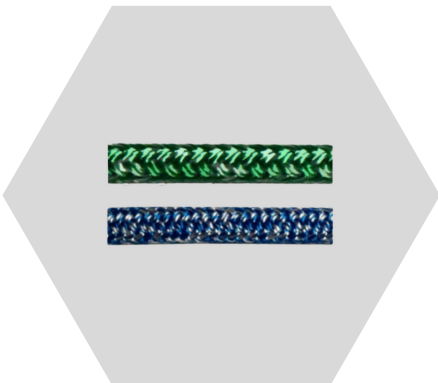
UHMWPE core, surrounded by a polyester jacket.



DYNEEMA WINCHLINE

DON-BRS

- Extreme strength to weight ratio
- 8 x lighter, 70% stronger and safer than wire
- High UV and chemical resistance
- Floats and does not absorb water



SUPERBRAID

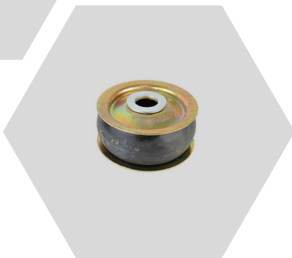
- Light weight UHMwPE core with High Tenacity Polyester cover provides high strength with minimal stretch
- 4-24mm in 200m reels



ELECTRIC CABLE BLOWER

CLP-DB102/CLP-DB102-KIT

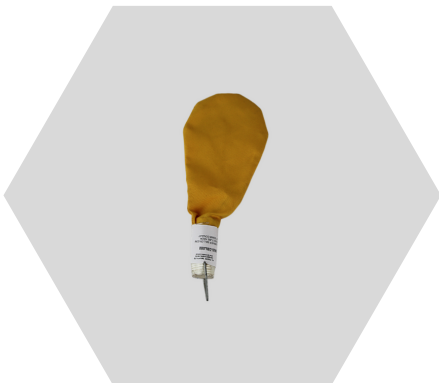
- Two speed 240V x 2200W* motor delivers constant air pressure for blowing conduits to 150mm diameter.
- The 240V Conduit Blower Can be purchased in a kit which includes blowing accessories such as bags, balloons etc, to suit your specific needs.



ROPING GUN

VAN-DPL-400

- User friendly heavy duty on/off lever.
- Will efficiently blow drawline or parramatta rope to conduits up to 200mm
- Available in kit:
 - 5 x seal offs
 - 5 x drawline grommets
 - Tool Box



BALLOONS

VAN-DBL

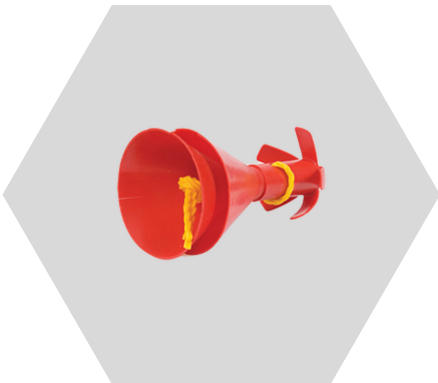
- VAN-DBL050 – 50MM BALLOON
- VAN-DBL100 – 100MM BALLOON
- VAN-DBL125 – 125MM BALLOON
- VAN-DBL150 – 150MM BALLOON



BAGS

CLP-DB102/CLP-DB102-KIT

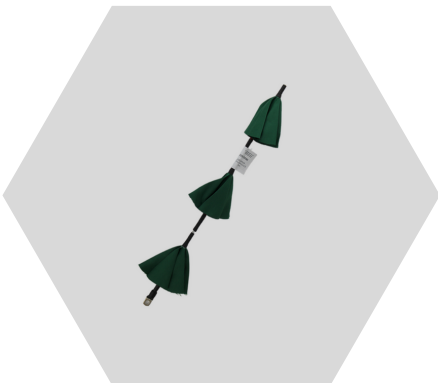
- Two speed 240V x 2200W* motor delivers constant air pressure for blowing conduits to 150mm diameter.
- The 240V Conduit Blower Can be purchased in a kit which includes blowing accessories such as bags, balloons etc, to suit your specific needs.



DARTS

VAN-DPL-400

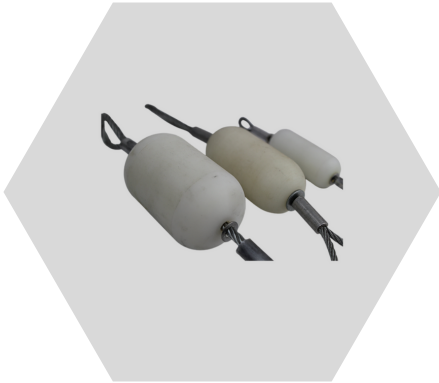
- User friendly heavy duty on/off lever.
- Will efficiently blow drawline or parramatta rope to conduits up to 200mm
- Available in kit:
 - 5 x seal offs
 - 5 x drawline grommets
 - Tool Box



TRIPLE PARACHUTES

VAN-DBL

- VAN-DBL050 – 50MM BALLOON
- VAN-DBL100 – 100MM BALLOON
- VAN-DBL125 – 125MM BALLOON
- VAN-DBL150 – 150MM BALLOON



PROVING MANDRELS

PM

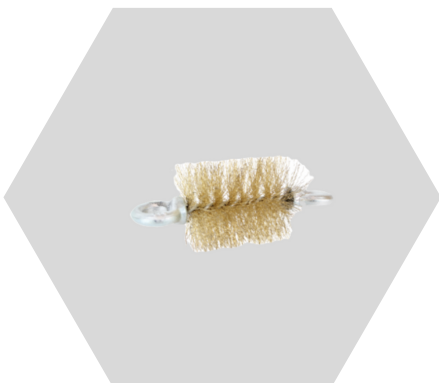
- PM12 – PROVING MANDREL – 12MM O/D X 50MM
- PM15 – PROVING MANDREL – 15MM O/D X 50MM
- PM18 – PROVING MANDREL – 18MM O/D X 50MM
- PM22 – PROVING MANDREL – 22MM O/D X 60MM
- PM25 – PROVING MANDREL – 25MM O/D X 60MM
- PM30 – PROVING MANDREL – 30MM O/D X 60MM
- PM32 – PROVING MANDREL – 32MM O/D X 60MM
- PM40 – PROVING MANDREL – 40MM O/D X 80MM
- PM48 – PROVING MANDREL – 48MM O/D X 80MM
- PM60 – PROVING MANDREL – 60MM O/D X 100MM



CLEANING MANDRELS

CRC

- CRC-050 – RUBBER CONDUIT CLEANER– 50MM
- CRC-080 – RUBBER CONDUIT CLEANER– 80MM
- CRC-100 – RUBBER CONDUIT CLEANER– 100MM
- CRC-125 – RUBBER CONDUIT CLEANER– 125MM
- CRC-150 – RUBBER CONDUIT CLEANER– 150MM
- CRC-200 – RUBBER CONDUIT CLEANER– 200MM



WIRE BRUSH MANDREL

WBM

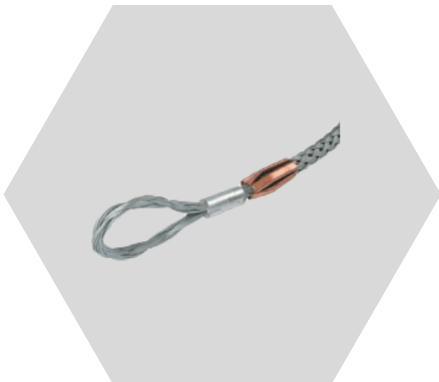
- WBM-050 – WIRE BRUSH MANDREL – 50MM
- WBM-080 – WIRE BRUSH MANDREL – 80MM
- WBM-100 – WIRE BRUSH MANDREL – 100MM
- WBM-125 – WIRE BRUSH MANDREL – 125MM
- WBM-150 – WIRE BRUSH MANDREL – 150MM
- WBM-200 – WIRE BRUSH MANDREL – 200MM



SINGLE EYE STANDARD CABLE PULLING GRIPS

NATCG

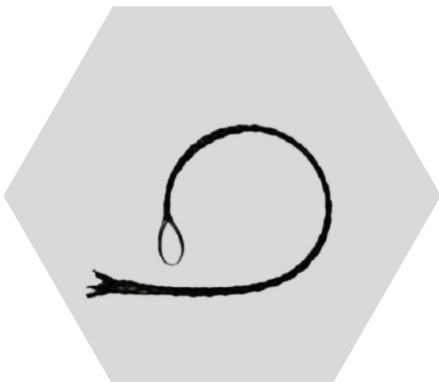
- NATCG1014 – SUIT 10 – 14MM – 5KN UTS
- NATCG1419 – SUIT 14 – 19MM – 9KN UTS
- NATCG1928 – SUIT 19 – 28MM – 15KN UTS
- NATCG2840 – SUIT 28 – 40MM – 24KN UTS
- NATCG4055 – SUIT 40 – 55MM – 35KN UTS
- NATCG5575 – SUIT 55 – 75MM – 62KN UTS
- NATCG7595 – SUIT 75 – 95MM – 98KN UTS



SINGLE EYE HEAVY DUTY CABLE GRIP WITH COPPER SHOULDER & COLOURED

SWI-

- NAT-HDGW10CS – SUIT 10 – 15MM – 750MM LENGTH - 37KN UTS - GREEN
- NAT-HDGW15CS – SUIT 15 – 21MM – 810MM LENGTH - 57KN UTS - BLACK
- NAT-HDGW20CS – SUIT 20 – 29MM – 1040MM - 73KN UTS - BLUE
- NAT-HDGW27CS – SUIT 27 – 35MM – 1160MM - 101KN UTS - ORANGE
- NAT-HDGW32CS – SUIT 32 - 37MM – 1160MM LENGTH - 101KN UTS



SINGLE EYE KEVLAR CABLE SOCKS

- C8010 – SUIT 10 – 14MM – 350MM 12KN UTS / 4KN WLL
- C8014 – SUIT 14 – 19MM – 400MM 12KN UTS / 4KN WLL
- C8019 – SUIT 19 – 28MM – 500MM 18KN UTS / 6KN WLL
- C8028 – SUIT 28 – 40MM – 600MM 30KN UTS / 10KN WLL
- C8040 – SUIT 40 – 55MM – 800MM 36KN UTS / 12KN WLL



CABLE SWIVELS & FUSES

SWI-

- SWI-16 – 16MM O/D x 88MM 6KN MAX (CLEVIS 8.6MM)
- SWI-22 – 22MM O/D X 114MM 10KN MAX (CLEVIS 10MM)
- SWI-33 – 33MM O/D X 144MM 18KN MAX (CLEVIS 16.8MM)
- SWI-40 – 40MM O/D X 173MM 37.8KN MAX (CLEVIS 22.3MM)
- SWI-60 – 60MM O/D X 250MM 97.85KN MAX (CLEVIS 25.4)



QUICKLINKS

FSDQ™SSO

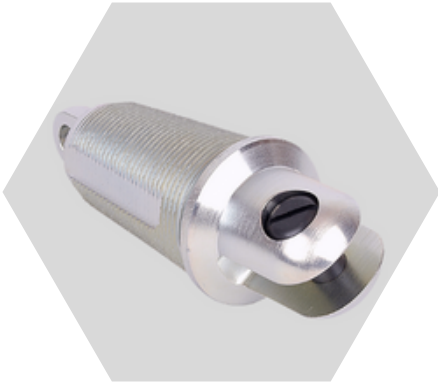
STAINLESS ORDER INFO

P/N	SIZE Ø	SWL 5:1 TON	A (MM)	B (MM)	C (MM)
DQ12SSO	12	2,20	100	23	23
DQ14SSO	14	3,10	115	27	27
DQ16SSO	16	4,00	150	38	28
DQ19SSO	19	5,50	175	43	32

FSDQ™GAO

GALVANISED ORDER INFO

P/N	SIZE Ø	SWL 5:1 TON	A (MM)	B (MM)	C (MM)
DQ12GAO	12	1,25	100	23	23
DQ14GAO	14	2,00	115	27	27
DQ16GAO	16	2,50	129	30	30
DQ18GAO	18	3,00	143	33	33
DQ20GAO	20	3,60	159	37	37



INNERDUCT PULLING EYES

60510

- Easy insertion by rotating the pulling eye into the innerduct allows the threads to make the connection
- A convenient hole in the threaded end of the pulling eye body is used to tie off the innerduct pulling line or tape keeping it from being lost during the pulling operation
- Used for placement of 32mm sub-duct



CABLE PULLING HARNESS/ BRIDLE

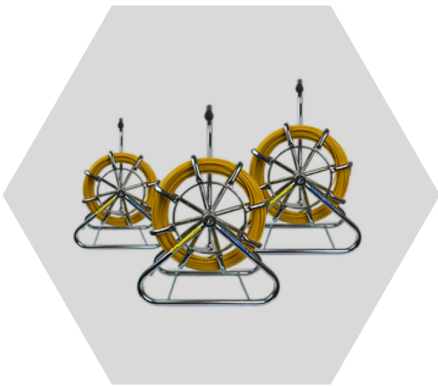
- Made to customer specification
 - Please call for more details



PORTABLE POWERED DUCT ROD PUSHER

89004

- Hydraulically powers GMP 13mm Duct Rodders in to and out of conduits.
- Pushes and pulls with forces up to 300 lbs.
- Rod speeds up to 130 ft/min (40 meters/min)
- Accurately measures footage and speed with an electronic monitoring system that works in either direction.
- When pulling back, the fiberglass rod is placed directly back onto the cassette.



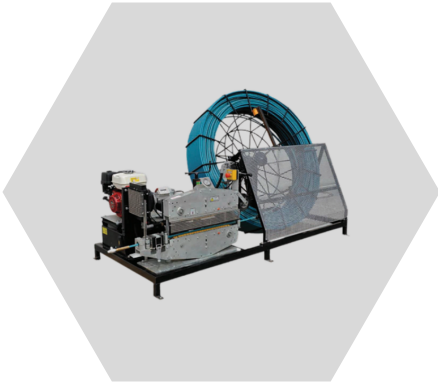
DETECTABLE CONTINUOUS RODDERS

- DETECTABLE Rodders Available in sizes below:
 - ATM-45TR60
 - Rodder & Frame - 4.5mm x 60m
 - Weight 3.5kg
 - ATM-45TR80
 - Rodder & Frame - 4.5mm x 80m
 - Weight 4kg
 - ATM-6TR100
 - Rodder & Frame - 6mm x 100m
 - Weight 7kg
 - ATM-6TR120
 - Rodder & Frame - 6mm x 120m
 - Weight 8kg
 - ATM-9TR125
 - Rodder & Frame - 9mm x 125m
 - Weight 32kg
 - ATM-9TR150
 - Rodder & Frame - 9mm x 150m
 - Weight 36kg
 - ATM-11TR200
 - Rodder & Frame - 11mm x 200m
 - Weight 50kg
 - ATM-11TR250
 - Rodder & Frame - 11mm x 250m
 - Weight 56.5kg



RODDER ACCESSORIES

- Hook & Loop Set
- Rodder Coupling
- Rod Roller Guide
- Rope Hauling Eye
- Rodder Guide Tube
- Flexible Spring Leaders
- Repair Kits

**\$POA****PRICE ON APPLICATION**

POWERED DUCT RODDER

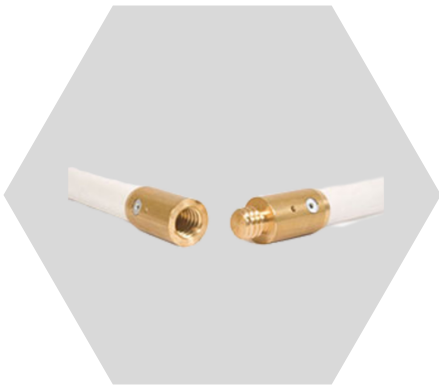
VOLTARING

- Capable of pushing & pulling, suitable for underground cable installs
- 300DAN PUSH/ 200DAN PULL
- Hydraulically operated command lever (forward/hold/reverse)
- Hydraulic force gauge
- Caterpillar track
- Electric start engine
- Metre counter 0-50m/min
- Housed rod brush (to clean off dirt & grime)
- 15mm Ø X 500MTR



COMBI WINCH - FOR OH & UG CABLE HAULING

- Max Pulling 35kN
- Speed 0-60m/min (each direction)
- Force/Speed
 - 30kN (0-15m/min)
 - 20kN (0-30m/min)
 - 10kN (0-45m/min)
- Rope Diameter: 10, 14, 16mm
- Traction: Dual Head Multi Grooved Capstans
- Capstan Diameter: 250mm
- Grooves: 7+7
- Safety:
 - Built in auto reverse break immobiliser (dead man)
- Instrument
 - Electronic displays with USB
 - Force, speed, winch, length, linkable to computer USB and operated hours
- Skid Style for mounting to truck
- Engine: 33HP DIESEL (24.4kW)
- Weight: 1200kg



HAND RODS

VAN-HR

- Sectional 22mm x 3m
- Brass male & female ends

TCH-22MF

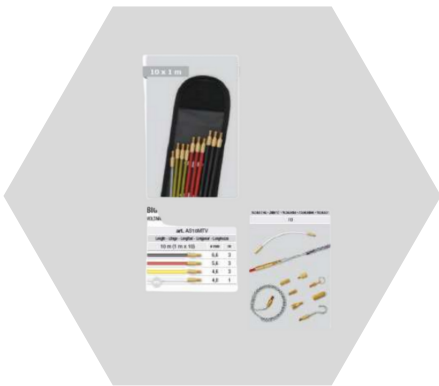
- Crank Handle

THL-2290

- Hook & Loop Set

TRE-22

- Leading Eye/Hauling Eye



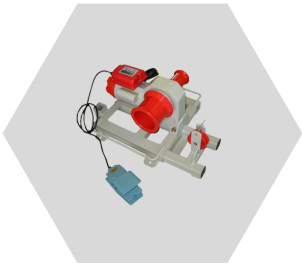
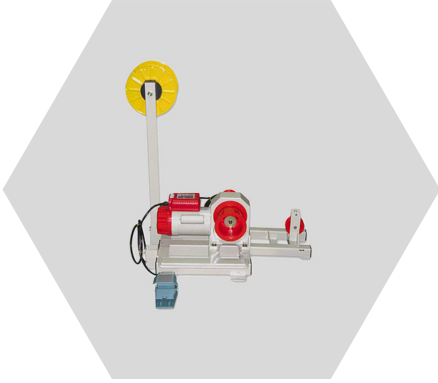
HAND ROD KITS

ATM-AS10MTV

- Push/Pull 10 x 1m basalt fibre rod set in storage bag with accessory kit
- 10 x 1m basalt fibre rods fitted with male & female end fittings
 - 3 x 6.6mm
 - 3 x 5.6mm
 - 3 x 4.6mm
 - 1 x 4mm (nylon) (ALL CONNECTABLE)
- 10pc Accessory kit
 - Super beam LED
 - Hook
 - Chain
 - Grip
 - Magnet
 - Pulling Eyelet
 - Adaptor
 - Flex End
 - Threader
 - Starter End



BASALT FIBRE IS SIMILAR TO CARBON FIBRE & FIBREGLASS – IT HAS BETTER PHYSIOCHEMICAL PROPERTIES THAN FIBREGLASS AND IS CHEAPER THAN CARBON FIBRE.



SPECIFICATIONS

- 2.5MTRS PER MINUTE AT 2500KG
- 4MTRS PER MINUTE AT 1500KG
- ROPE DIVERTOR
- ROPE REELER
- FOOT SWITCH

CAPSTAN WINCHES -2500KG LINE PULL

PACCCP-H2500

- The Comeup Capstan Winch is suited to tackle the toughest wall, ground and underground pulling applications, due to its dual capacity of 2500kg and 1500kg. This product is precision engineered and constructed from heavy duty material which creates a high performance product with low maintenance.
 - 240 volt single phase cable puller.
 - Dual pulling capacity of 2500 kg and 1500 kg.
 - Dual speeds vary according to drum size.
 - Over load protection switch which ensure automatic shut-off.
 - Electromagnetic spring-applied fail safe brake.
 - Heavy duty high efficiency ball bearings on all running surfaces.
 - Rugged high power induction motor for proven reliability.
 - Case hardened gear train for maximum mechanical efficiency.
 - Rope storage reeler.
 - Supplied with 3m power supply cable.
 - Suitable rope diameter 7mm to 12mm. Please note that rope is not supplied as standard. A minimum of six wraps of rope around the drum is necessary to support the rated load.
- Do not use the Comeup Capstan Winch as a lifting device for vertical lifting.

MODEL	H2500	
DrumType	Large Drum	Small Drum
Stock Code	CAP250	
Rated Capacity	1500	2500
Max. Pulling Duration (min)	15	15
Motor Output	240V 0.6kW IP44	
Rope Speed(m/min)	4.0	2.5
Control	Foot Control	
Gear Ratio	154:1	
Net Weight (kg)	60	60



ROLLY WINCH

- 4HP
- 4 Stroke
- Capstan Winch
- Safety Stop Switch
- 25:1 Ratio Transmission
- Tow Ball Attachment



SPECIFICATIONS

- Continuous 1.8kN Line Pull
- Maximum 3,5kN Line Pull



CAPSTAN PETROL WINCH (1136KG LINE PULL)

PCW5000

- 4 Stroke/2.5 HP
- Portable
- 1136KG capacity single line @ up 12 m/min (using standard 57mm capstan)
- Weight 15kg
- Optional
 - Larger 85mm capstan available
 - Tow ball/Hitch Ball/Pole Mount adaptors

ACCESSORIES

85MM LARGE CAPSTAN DRUM

SPE-PCA1100

- Suits PCW5000 Capstan winch
- Allows for larger amounts of rope to be used

HAYMAN REECE MOUNTING BRACKET & TUBE

SPE-PCA1267

- For trailer/towbar mounting compatibility





"CABLE DOG" CABLE FEEDER (800DAN)

VMMS800B

- Cable feeders can be used in conjunction with hauling winches to assist and protect cable on long winding hauls
- Specially designed rubberised track chain and pressure regulated devices secure cable for smooth and even feed assist
- **ALSO AVAILABLE WITH ELECTRIC MOTOR OR HYDRAULIC MOTOR AND POWER PACK**

\$POA

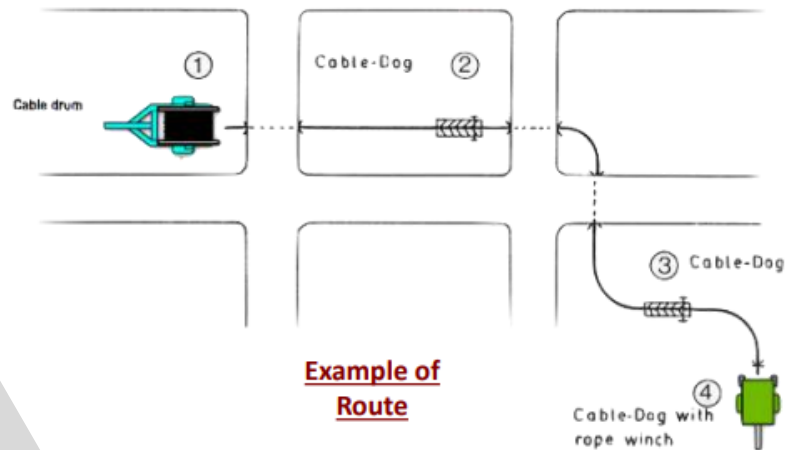
PRICE ON APPLICATION



SPECIFICATIONS

- Cable Capacity: 40-120mm O/D
- Pushing Force: 800 daN MAX
- Speed: 1-11m/min
- Dimensions
 - Length: 1140mm
 - Width: 700mm
 - Height: 1250mm
 - Weight: 190kG

Depending on Route and Cable Specification it may be necessary to use multiple Feeders



Example of Route





FIBRE OPTIC CABLE BLOWING MACHINE

JET STREAM

- Hydraulic/Pneumatic Cable Blower
- Hydraulic Power Pack Supplied
- Pressure and Flow Requirements
 - 15 BAR @ 450CFM
 - Suitable for blowing micro ducts



SPECIFICATIONS

- Cable Diameter: 4-20mm
- Duct Diameter: 10-50mm
- Maximum Speed: 185m/min
- Width: 484mm
- Length: 620mm
- Height 233mm
- Net Weight (Machine Only): 31kg





FIBRE OPTIC CABLE BLOWING MACHINE

TORNADO

- Hydraulic/Pneumatic Cable Blower
- Unique Fibre Protection Technology
- Pressure and Flow Requirements
 - 8-16 BAR @ 200-500 LPM Flow (6-14 CFM)



SPECIFICATIONS

- Cable Diameter: 6-32mm
- Duct Diameter: 12-63mm
- Blowing Distance: <3.5km
- Maximum Speed: 90m/min



MOBILAIR® M20

- Polyethylene or Metal Enclosure Options
- Service Friendly
- Alternative Colours
- Mounting options:
 - Tow bar
 - Skid Mount
 - Fixed



SPECIFICATIONS

- 7 BAR Working Pressure
- 71 CFM Air Flow
- Kubota Engine
- Suitable for Grundomat (Up to 75mm)



MOBILAIR® M27

- Powerful & Energy Saving
- Service Friendly
- Impressive Performance
- Cool, Dry Compressed air (7°C above ambient)



SPECIFICATIONS

- 7 BAR Working Pressure
- 92 CFM Air Flow
- Kubota Engine
- Suitable for Grundomat (100mm)



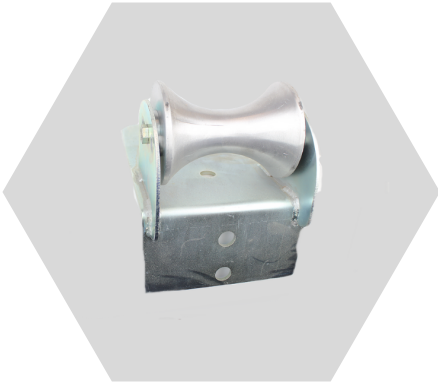
MOBILAIR® M31

- Powerful & Energy Saving
- Service Friendly
- Impressive Performance
- Cool, Dry Compressed air (7°C above ambient)



SPECIFICATIONS

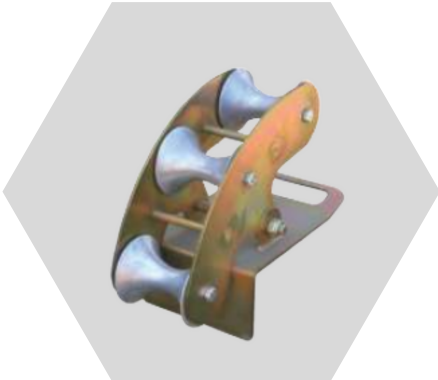
- 7-14 BAR Working Pressure
- Up to 110 CFM Air Flow
- Kubota Engine
- Suitable for Grundomat (180mm)



MANHOLE ROLLER GUIDES

MRG-

- MRG-140 – MANHOLE ROLLER GUIDE – 1 X 140MM ALUMINIUM ROLLER
- MRG140/2 -MANHOLE ROLLER GUIDE – 2 X 140MM ALUMINIUM ROLLER
- MRG140/2 -MANHOLE ROLLER GUIDE – 3 X 140MM ALUMINIUM ROLLER



PIVOTING MANHOLE ROLLER GUIDES

MPRG-140

- Pivoting manhole roller guide
 - 3x140mm Aluminium Rollers
- PVC Rollers also available
- **Special Roller Guides can be fabricated to order**



BELLMOUTH CONDUIT GUIDES

BM™

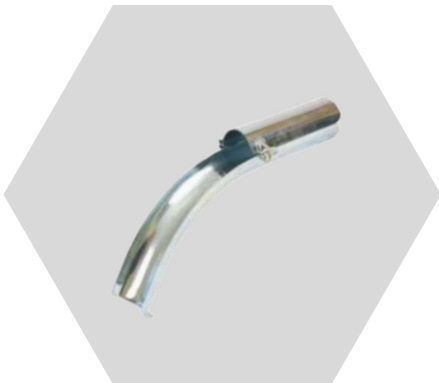
- BM095 – BELL MOUTH – SUIT 100MM CONDUIT
- BM115 – BELL MOUTH – SUIT 125MM CONDUIT
- BM140 – BELL MOUTH – SUIT 150MM CONDUIT



LOCKABLE CONDUIT ROLLER GUIDE

SRG-

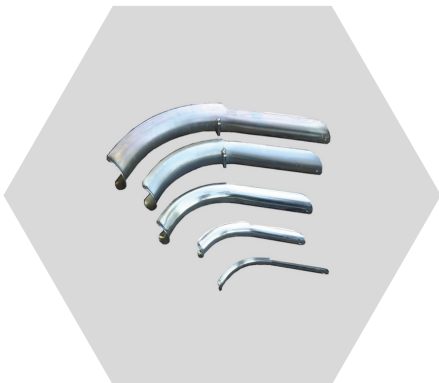
- SRG040 – LOCKABLE ROLLER GUIDE – SUIT 50MM O/D
- SRG046 – LOCKABLE ROLLER GUIDE – SUIT COMMS 50MM
- SRG095 – LOCKABLE ROLLER GUIDE – SUIT 100MM I/D
- SRG115 – LOCKABLE ROLLER GUIDE – SUIT 125MM I/D
- SRG140 – LOCKABLE ROLLER GUIDE – SUIT 150MM I/D
- SRG200 – LOCKABLE ROLLER GUIDE – SUIT 200MM O/D



LOCKABLE SLIPPER GUIDES

CLS

- CLS100 – LOCKABLE SLIPPER GUIDE – 100MM
- CLS125 – LOCKABLE SLIPPER GUIDE – 125MM
- CLS150 – LOCKABLE SLIPPER GUIDE – 150MM



CONDUIT SLIPPER GUIDES

CS[™]

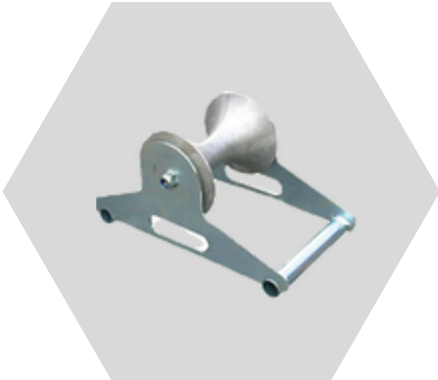
- CS035 – SLIPPER GUIDE – 35MM
- CS050 – SLIPPER GUIDE – 50MM
- CS080 – SLIPPER GUIDE – 80MM
- CS095 – SLIPPER GUIDE – 100MM
- CS125 – SLIPPER GUIDE – 125MM
- CS150 – SLIPPER GUIDE – 150MM



TRENCH CORNER ROLLERS

TCR-

- TCR – TRENCH CORNER ROLLER – 200KG W.L.L WEIGHS 11KG
- 2 X VERTICAL 60MM O/D TUBE ROLLERS WITH BEARINGS
- 1 X HORIZONTAL 60MM O/D TUBE ROLLER WITH BEARINGS
- USE STANDARD STAR PICKETS
- WITH GROUND SECURING HOLES AND CARRY HANDLE



FLAT TRENCH ROLLERS

CLS

- NTRA -TRENCH ROLLER WITH 140MM ALUMINIUM ROLLER
- NTRPVC - TRENCH ROLLER WITH 140MM HIGH IMPACT PVC ROLLER



CABLE TRAY ANGLE ROLLERS

CTR-050

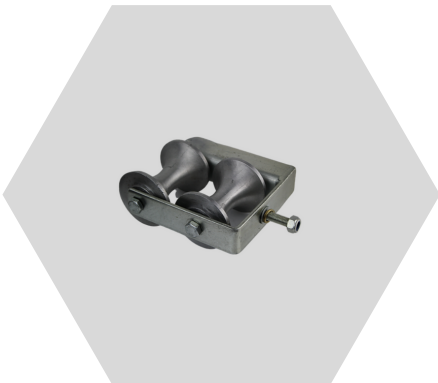
- CAN BE BOLTED & MOUNTED FOR RADIUS TO EASE CABLE AROUND CHANGES OF DIRECTION
 - SUIT UP TO 50MM O/D CABLE



TRENCH CORNER ROLLERS

TCR-

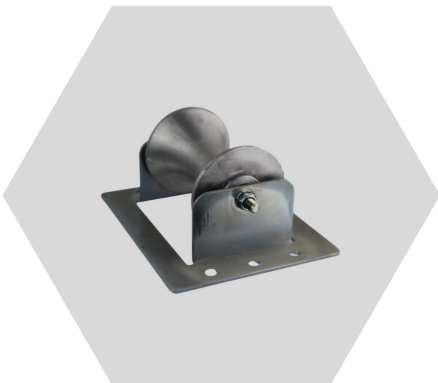
- TCR – TRENCH CORNER ROLLER – 200KG W.L.L WEIGHS 11KG
- 2 X VERTICAL 60MM O/D TUBE ROLLERS WITH BEARINGS
- 1 X HORIZONTAL 60MM O/D TUBE ROLLER WITH BEARINGS
- USE STANDARD STAR PICKETS
- WITH GROUND SECURING HOLES AND CARRY HANDLE



TWIN CABLE TRAY ROLLER

CTR-080

- CAN BE USED TO EASE CABLE FROM HORIZONTAL TO VERTICAL DIRECTION
 - SUIT UP TO 80MM O/D CABLE



CABLE TRAY ROLLERS

CTRA160

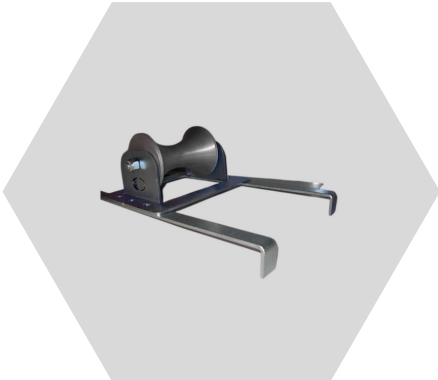
- CAN BE USED TO EASE CABLE FROM HORIZONTAL TO VERTICAL DIRECTION
- SUIT UP TO 80MM O/D CABLE



OCCUPIED TRENCH CABLE ROLLER

CTR-

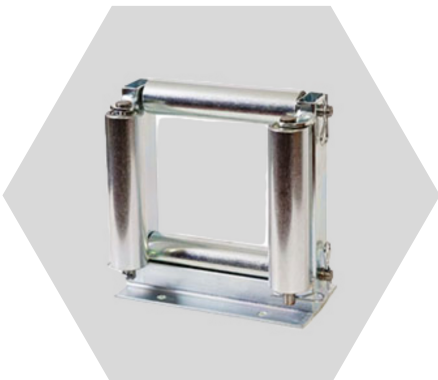
- CTR-050 – CORNER ROLLER FOR TRAY
 - Can be bolted and mounted for radius to ease cable around changes of direction
 - Suits up to 50mm O/D Cable
- CTR-080 - TWIN ROLLER FOR TRAY
 - Can be used to ease cable from horizontal to vertical direction
 - Suits up to 80mm O/D Cable



CABLE LADDER ROLLER

CTRS

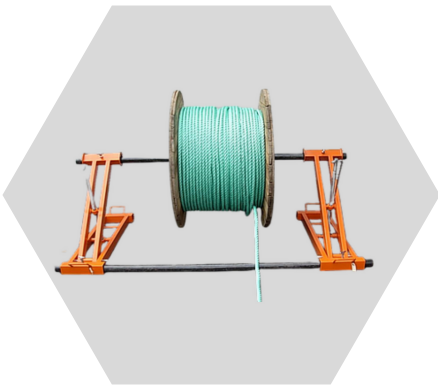
- CTRS0160-TRENCH ROLLER WITH 140MM AL ROLLER & SIDE ARMS
 - ADJUSTABLE SIDE ARMS



MULTIPURPOSE SQUARE ROLLER

CRG

- CRG-080 – CABLE ROLLER GUIDE – 80MM SQUARE
- CRG-165 – CABLE ROLLER GUIDE – 165MM SQUARE
 - Can be bolted down and mounted to tray/ladder
 - Top roller can be removed



SCISSOR LIFT DRUM STANDS

VAN-SL

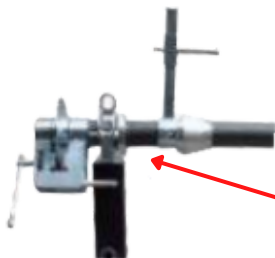
- NATA Proof tested to 4 Tonne
 - Supplied with 2 x 60mm axles (2.5m) & 2 x retaining collars
 - Each lift has wheels and carry handles for ease of manouvering
 - **12 month warranty on workmanship**
-
- Unit Supplied in four parts
 - 2 x Scissor lift supports (can be flattened)
 - 2 x 60mm axles (2.5m long)
 - 2 x retaining collars to ensure no creeping occurs when drum is in motion
 - Support Beam Included



CABLE DRUM SUPPORT STAND

VAN-HDJ8

- Plated 8000kg and supplied with certificate
- Supplied with 90mm axle as standard 3 x retaining collars
- Supplied with 2 x drum cones and 3 x retaining collars
- Carry handles for ease of manoeuvring
- Front brackets Load Rating: 5 Tonne
- Top Brackets Load Rating: 8 Tonne



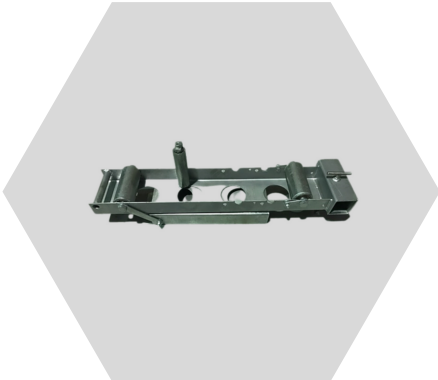
- **Optional Disc Brake accessory available (enquire for more info)**



DRUM HANDLING TROLLEY

CDT-500

- Foldaway & lightweight
- Handles drums up to 500kg
- Max Width of 900mm
 - Supplied with Spindle & Locking Collars (x4)
 - Pneumatic Tyres
 - 4 Mounting Positions



DRUM ROLLER RAMP

VAN-DRR-100

- Simple and easy to use
- For use on flat surfaces
- Have 1000kg WLL and a max drum diameter of 1800mm (minimum 600mm)

- Dimensions (Open Rail)
 - 120L x 19W x 18CMH
- Folded Dimensions
 - 81L x 19W x 25CMH
- Total Weight for Set
 - 3 piece
 - 25kg
- Stabiliser Bar
 - 60mm Diameter





QUICK FLICK POP UP TELECOM TENTS

6506D/6508D

- 6506D – 1.8M X 1.8M – WEIGHS 9.5KG – 15CM X 142CM FOLDED
- 6508D – 2.4M X 2.4M – WEIGHS 14.5KG – 18CM X 168CM FOLDED
- HEAVY DUTY FRAME
- DUAL ZIP ROLL UP WIDE DOOR
- INTERCONNECT WITH OTHER "D" STYLE TENT
- VENTILATION HOSE ENTRY SLEEVE
- 2 SCREENED WINDOWS WITH ROLL UP FLAPS



QUICK FLICK POP UP TELECOM TENTS

6506A/6508A

- 6506A – 1.8M X 1.8M – WEIGHS 9KG – 15CM X 142CM FOLDED
- 6508A – 2.4M X 2.4M – WEIGHS 14KG – 18CM X 168CM FOLDED
- HEAVY DUTY FRAME
- DUAL ZIP ROLL UP WIDE DOOR
- VENTILATION HOSE ENTRY SLEEVE
- 2 SCREENED WINDOWS WITH ROLL UP FLAPS



QUICK FLICK FIBRE OPTIC SPLICERS TENT

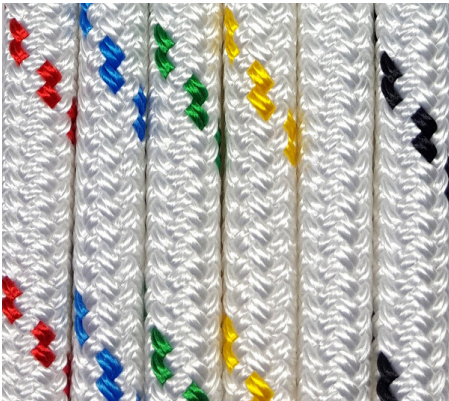
6506FO/6508FO

- 6506FO – 1.8M X 1.8M – WEIGHS 10KG – 15CM X 142CM FOLDED
- 6508FO – 2.4M X 2.4M – WEIGHS 15KG – 18CM X 168CM FOLDED
- SOLID WHITE INTERNAL WALLS AND FLOOR CONSTRUCTED FROM ACRYLIC FOR "BREATHABILITY" AND "INCREASED LIGHT"
- CABLE SLOTS WITH VELCRO CLOSURES.
- PORTABLE AIR CONDITIONERS AND HEATERS AVAILABLE

DOUBLE BRAIDED ROPE

WHI-DB10

- Easy to Splice
- 100% UV resistant polyester
- High strength and hard wearing cover



DIAMETER (MM)	SPOOL LENGTH (M)	MAX LENGTH (M)	APPROX BREAK KGS
6	200	800	960
8	200	800	1,600
10	100	600	2,200
12	100	600	3,400
14	100	400	4,800
16	100	600	5,400
18	80	480	6,000
20	100	400	10,500
22	100	400	TBA
24	100	300	11,600
26	100	200	TBA
28	100	200	16,700

PROVING MANDRELS

ATM-PM

DESCRIPTION

- Used to test the circular integrity of a conduit after back filling.
- Made from high density polyethylene for long durability
- Assembled with galvanised wire rope and aluminium ferrules to create an eye at each end for fixing of rope for hauling.

SIZES

Our standard provers are available in sizes from:

- 12mm to 190mm
- ATM-PM(required diameter)
- eg.
 - ATM-PM12 (12mm diameter mandrel)





CABLE HAULING LUBE - PREMIUM

ATM-CHG

- Lubricant polymer for heavy cable hauling
 - CHG20 - 20 Litre Container
 - CHG200 - 200 Litre Container
- Pump or hand apply
- Water based - Easy Clean up (environmentally friendly)
- High shear resistance under high sidewall pressure
- High cling factor
- Slow drying



CABLE HAULING LUBE - GENERAL PURPOSE

ATM-CHL

- Lubricant polymer for lighter cable hauling
 - CHL20 - 20 Litre Container
 - CHL200 - 200 Litre Container
- Pump pour or hand apply
- Water Based - Easy Clean up (environmentally friendly)



LUBE PUMP

LP-D5

- Practical and clean transfer of hauling lubricant
- Use standard power tools (non-impact)
- Easy maintenance - cleans up with water
- Corrosion resistant

MATERIAL SAFETY DATA SHEET

Ref: ALLTRADES_CABLEGLIDE_MSDS Page 1 of 4

SECTION 1 - IDENTIFICATION OF THE MATERIAL AND SUPPLIER

PRODUCT (MATERIAL) NAME	ALLTRADES- CABLE GLIDE Cable Hauling Lubricant		
OTHER NAMES			
RECOMMENDED USE	Provides high quality slip in cable hauling		
SUPPLIER NAME/ADDRESS	ALLTRADES MANUFACTURING PTY LTD PTY LTD 11/5 Hudson Avenue Castle Hill NSW 2154		
TELEPHONE NO.	+61-(02) 8850 2700	Facsimile:	+61- Fax: (02) 8850 2701
EMERGENCY PHONE NUMBER	(02) 8850 2700	Hours:	0800-1700 Monday-Friday

SECTION 2 HAZARDS IDENTIFICATION

HAZARD CLASSIFICATION	Not classified as hazardous according to criteria of SAFEWORK Australia.
HAZARD CATEGORY	Not classified as dangerous according to criteria of ADG Code
RISK PHRASE(S)	
SAFETY PHRASE(S)	

SECTION 3 COMPOSITION/INFORMATION ON INGREDIENTS

MIXTURE

Chemical identity of ingredients	Proportion of ingredients	CAS Number(s) for ingredients
Balance of formulation consists of other ingredients determined not to be hazardous.		

SECTION 4 FIRST AID MEASURES

Swallowed:	First Aid is not generally required. If in doubt, contact a Poisons Information Centre (☎ 131126) or a doctor. Give a glass of water.
Eye:	If in eyes wash out immediately with water.
Skin:	If skin or hair contact occurs, remove contaminated clothing and flush skin and hair with running water.
Inhalation:	If inhaled, remove from contaminated area. Apply artificial respiration if not breathing. If necessary seek medical advice.
Medical attention or special treatment required	
ADVICE TO DOCTOR.	Treat symptomatically.

SECTION 5 FIRE FIGHTING MEASURES

SUITABLE EXTINGUISHING MEDIA	Foam, Carbon Dioxide, Dry Chemical Powder, and Water fog.
HAZARDS FROM COMBUSTION PRODUCTS	Combustion will release toxic gasses. (COx)
SPECIAL PROTECTIVE PRECAUTIONS AND EQUIPMENT FOR FIRE FIGHTERS	Fire fighters to wear self-contained breathing apparatus if risk of exposure to vapour or products of decomposition (COx) evolved.
<i>Additional information</i>	
<i>Hazchem Code</i>	Not applicable

SECTION 6 ACCIDENTAL RELEASE MEASURES

EMERGENCY PROCEDURES	Extinguish any source of flame Evacuate area, clearing all unnecessary personnel. Contain liquid with soil/sand. Prevent liquid from entering storm water drains. Wear protective goggles to prevent eye contamination. Absorb spill with soil/sand and recover material into mild steel drums. Label drums correctly.
METHODS AND MATERIALS FOR CONTAINMENT AND CLEAN UP	Refer to State Land Waste Management Authority. Empty containers must be decontaminated. Normally suitable for disposal at approved land waste site.

SECTION 7 HANDLING AND STORAGE

PRECAUTIONS FOR SAFE HANDLING	Wear protective goggles and rubber gloves to prevent eye and skin contamination.
CONDITIONS FOR SAFE STORAGE	Store in original containers in a well-ventilated place and out of direct sunlight. Keep containers tightly sealed when not in use. Check area regularly for spills.

INCOMPATIBILITIES Oxidising Agents (Class 5) and Acids (Class 8)

SECTION 8 EXPOSURE CONTROLS/PERSONAL PROTECTION

NATIONAL EXPOSURE STANDARDS	Not established for this product.
BIOLOGICAL LIMIT VALUES	
ENGINEERING CONTROLS	Residue is not readily soluble in water (having dried initially)
PERSONAL PROTECTION:	Avoid unnecessary contact as good work practice. Wash contaminated clothing and protective equipment before storing and re-use. Wash hands before eating, smoking or using the toilet.
RESPIRATORY PROTECTION	It is usually safe to not use respiratory protection. However, there may be circumstances where use of a mask or other device is appropriate. Use judgement. For assistance in selecting suitable equipment consult AS/NZ1715.
EYE PROTECTION	Eye protective measures are normally necessary, and are suggested when using this product. Consult AS1336 and AS/NZ1337
PROTECTIVE GLOVES	Rubber, PVC or other protective gloves are necessary, and desirable, especially if product is being used frequently or for lengthy periods. Consult AS2161 for guidance.
CLOTHING	Clean overalls should be worn, preferably with an apron. Consult AS2919 for clothing guidance.
SAFETY FOOTWEAR	Wearing safety boots is advisory. Consult AS/NZ 2210 for advice on Occupational Protective Footwear.

SECTION 9 PHYSICAL AND CHEMICAL PROPERTIES

<u>Appearance:</u>	Green medium viscosity gel.
<u>Flammability:</u>	not flammable
<u>Melting Point:</u>	0°C
<u>Boiling Point:</u>	100°C
<u>Flash Point:</u>	unknown
<u>Vapour Pressure:</u>	unknown
<u>Volatiles:</u>	>98%
<u>Vapour Density</u>	unknown
<u>Flammability Limits</u>	unknown
<u>pH</u>	7.0-8.0
<u>Specific Gravity:</u>	1.03-1.05
<u>Solubility in water</u>	soluble
<u>Additional information</u>	The product is not corrosive to copper, brass, zinc and zinc alloys, mild or stainless steel if in contact with these materials over an extended time period.

SECTION 10 STABILITY AND REACTIVITY

Chemical stability	Stable
Conditions to avoid	Do not freeze
Incompatible materials	Oxidising Agents (Class 5) and Acids (Class 8)
Hazardous decomposition products	Combustion will release toxic gasses. (COx)
Hazardous reactions	None known

SECTION 11 TOXICOLOGICAL INFORMATION

Health effects from the likely routes of exposure

SYMPTOMS OF EXPOSURE

Swallowed:	Short term exposure by all routes is considered to be practically non-harmful.
Eye:	May be a mild eye irritant.
Skin:	Repeated or prolonged skin contact may lead to mild irritation, particularly if skin is left moist.
Inhalation:	Inhalation of dust residue may result in respiratory irritation.

ACUTE**DELAYED***Additional information**Aggravated medical conditions caused by exposure*

SECTION 12 ECOLOGICAL INFORMATION

ECOTOXICITY	Low
PERSISTENCE AND DEGRADABILITY	Product is biodegradable
MOBILITY	Water dilutable – product is mobile
<i>ADDITIONAL INFORMATION</i>	
<i>ENVIRONMENTAL FATE (EXPOSURE)</i>	Biodegradable
<i>BIOACCUMULATIVE POTENTIAL</i>	Unlikely to bioaccumulate

SECTION 13 DISPOSAL CONSIDERATIONS

DISPOSAL METHODS AND CONTAINERS	Refer to State Land Waste Management Authority. Empty containers must be decontaminated. Normally suitable for disposal at approved land waste site.
SPECIAL PRECAUTIONS FOR LANDFILL OR INCINERATION	

SECTION 14 TRANSPORT INFORMATION

UN NUMBER	Not applicable
UN PROPER SHIPPING NAME	Not applicable
CLASS AND SUBSIDIARY RISK	Not applicable
PACKING GROUP	Not applicable
SPECIAL PRECAUTIONS FOR USER	
HAZCHEM CODE	Not applicable

SECTION 15 REGULATORY INFORMATION

Poison Schedule	Not scheduled
OHS	Not considered a hazard
Environmental	Not considered a hazard
<i>Additional information</i>	
<i>Additional national and/or international regulatory information.</i>	

SECTION 16 OTHER INFORMATION

Date of preparation or last revision of the MSDS	25 August 2016
Prepared by	Glenn Bowring B App Sc (App Chem)
<i>Additional information</i>	
<i>Key/legend to abbreviations and acronyms used in the MSDS.</i>	
ADG	Australian Code for the Transport of Dangerous Goods by Road and Rail
ACGIH	American Conference of Governmental Industrial Hygienists
ASCC	Australian Safety and Compensation Council
Carcinogen Category Number	<ol style="list-style-type: none"> Established human carcinogen Probably human carcinogen Substances suspected of having carcinogenic potential
Code AICS	Australian Inventory of Chemical Substances
CAS number	Chemical Abstracts Service Registry Number
EPG	Emergency Procedure Guide (superseded by IERG)
Hazchem Code	Emergency action code of numbers and letters that provide information to emergency services especially firefighters
IARC	International Agency for Research on Cancer
IATA	International Air Transport Association
IERG	HB 76-2004 Dangerous goods - Initial Emergency Response Guide
IMDG	International Maritime Dangerous Goods. A uniform code for transport of dangerous goods at sea.
LEL	lower flammable (explosive) limits in air;
LD₅₀	Lethal Dose sufficient to kill 50% of test population
NIOSH	National Institute for Occupational Safety and Health The United States federal agency responsible for conducting research and making recommendations for the prevention of work-related injury and illness.
NOAEL	No Observed Adverse Effect Level
NOEL	No Observable Effect Level
NOHSC	National Occupational Health and Safety Commission
NTP	National Toxicology Program (USA)

PEL	Permissible Exposure Limit
RTECS	Registry of Toxic Effects of Chemical Substances (Symyx Technologies')
TCL_o	Toxic Concentration Low
TD_{Lo}	Toxic Dose Low : lowest dosage per unit of bodyweight (typically stated in milligrams per kilogram) of a substance known to have produced signs of toxicity in a particular animal species.
TLV	Threshold Limit Value (ACGIH):The time weighted average used to describe exposure which is harmless to most of the population when exposed 8 hours per day, 40 hours per week.
TWA	(Time Weighted Average): The average airborne concentration of a particular substance when calculated over a normal eight-hour working day, for a five-day week. These exposure standards are guides to be used in the control of occupational health hazards. All atmospheric contamination should be kept to as low a level as is workable. These exposure standards should not be used as fine dividing lines between safe and dangerous concentrations of chemicals. They are not a measure of relative toxicity.
SAFEWORK	Independent statutory agency with primary responsibility to improve occupational health and safety and workers' compensation arrangements across Australia.
STEL	(Short Term Exposure Limit): The average airborne concentration over a 15 minute period which should not be exceeded at any time during a normal eight-hour workday.
SUSDP	Standard for the Uniform Scheduling of Drugs & Poisons
SUSMP	Standard for the Uniform Scheduling of Medicines & Poisons
UEL	upper flammable (explosive) limits in air;
UN Number	United Nations Number
<i>Literature references.</i>	Safety Data Sheets from Suppliers
<i>Sources for data.</i>	Hazardous Substances Information System (HSIS)– ASCC Australia (on-line) GHS (Globally Harmonised System of Substance Classification & Labelling) REACH (European Chemical Substance Information System) ADG Code 7 th Edition SUSMP N ^o 10

DISCLAIMER:

This MSDS summarizes our best knowledge of the health and safety hazard information of the product and how to safely handle and use the product in the workplace. Each user should read this MSDS and consider the information in the context of how the product will be handled and used in the workplace including its use in conjunction with other products. If clarification or further information is needed to ensure that an appropriate risk assessment can be made, the user should contact ALLTRADES MANUFACTURING PTY LTD Pty Ltd. Our responsibility for products sold is subject to our standard terms and conditions, a copy of which is sent to our customers and is also available on request. ALLTRADES MANUFACTURING PTY LTD Pty Ltd however makes no warranty whatsoever, expressed, implied or of merchantability regarding the accuracy of such data or the results to be obtained from the use thereof and assumes no responsibility for injury to buyer or third persons or for any damage to property, Buyer assumes all risks.

MATERIAL SAFETY DATA SHEET

Ref: ALLTRADES_SLIDEHAULFLUID_MSDS Page 1 of 4

SECTION 1 - IDENTIFICATION OF THE MATERIAL AND SUPPLIER

PRODUCT (MATERIAL) NAME **ALLTRADES- SLIDE HAUL FLUID**
 OTHER NAMES
 RECOMMENDED USE Provides high quality slip in cable hauling
 SUPPLIER NAME/ADDRESS ALLTRADES MANUFACTURING PTY LTD PTY LTD 11/5 Hudson Avenue Castle Hill NSW 2154
 TELEPHONE NO. +61-(02) 8850 2700 Facsimile: +61- Fax: (02) 8850 2701
 EMERGENCY PHONE NUMBER (02) 8850 2700 Hours: 0800-1700 Monday-Friday

SECTION 2 HAZARDS IDENTIFICATION

HAZARD **Not classified as hazardous according to criteria of SAFEWORK Australia.**
 CLASSIFICATION **Not classified as dangerous according to criteria of ADG Code**
 HAZARD CATEGORY
 RISK PHRASE(S)
 SAFETY PHRASE(S)

SECTION 3 COMPOSITION/INFORMATION ON INGREDIENTS

MIXTURE

Chemical identity of ingredients	Proportion of ingredients	CAS Number(s) for ingredients
Balance of formulation consists of other ingredients determined not to be hazardous.		

SECTION 4 FIRST AID MEASURES

Swallowed: First Aid is not generally required. If in doubt, contact a Poisons Information Centre (☎ 131126) or a doctor. Give a glass of water.
 Eye: If in eyes wash out immediately with water.
 Skin: If skin or hair contact occurs, remove contaminated clothing and flush skin and hair with running water.
 Inhalation: If inhaled, remove from contaminated area. Apply artificial respiration if not breathing. If necessary seek medical advice.
 Medical attention or special treatment required

ADVICE TO DOCTOR. Treat symptomatically.

SECTION 5 FIRE FIGHTING MEASURES

SUITABLE EXTINGUISHING MEDIA Foam, Carbon Dioxide, Dry Chemical Powder, and Water fog.
 HAZARDS FROM COMBUSTION PRODUCTS Combustion will release toxic gasses. (COx)
 SPECIAL PROTECTIVE PRECAUTIONS AND EQUIPMENT FOR FIRE FIGHTERS Fire fighters to wear self-contained breathing apparatus if risk of exposure to vapour or products of decomposition (COx) evolved.
 Additional information
 Hazchem Code Not applicable

SECTION 6 ACCIDENTAL RELEASE MEASURES

EMERGENCY PROCEDURES Extinguish any source of flame
 Evacuate area, clearing all unnecessary personnel. Contain liquid with soil/sand.
 Prevent liquid from entering storm water drains.
 Wear protective goggles to prevent eye contamination.
 Absorb spill with soil/sand and recover material into mild steel drums. Label drums correctly.
 METHODS AND MATERIALS FOR CONTAINMENT AND CLEAN UP Refer to State Land Waste Management Authority. Empty containers must be decontaminated. Normally suitable for disposal at approved land waste site.

SECTION 7 HANDLING AND STORAGE

PRECAUTIONS FOR SAFE HANDLING Wear protective goggles and rubber gloves to prevent eye and skin contamination.
 CONDITIONS FOR SAFE STORAGE Store in original containers in a well-ventilated place and out of direct sunlight. Keep containers tightly sealed when not in use. Check area regularly for spills.

INCOMPATIBILITIES Oxidising Agents (Class 5) and Acids (Class 8)

SECTION 8 EXPOSURE CONTROLS/PERSONAL PROTECTION

NATIONAL EXPOSURE STANDARDS	Not established for this product.
BIOLOGICAL LIMIT VALUES	
ENGINEERING CONTROLS	Residue is not readily soluble in water (having dried initially)
<u>PERSONAL PROTECTION:</u>	Avoid unnecessary contact as good work practice. Wash contaminated clothing and protective equipment before storing and re-use. Wash hands before eating, smoking or using the toilet.
<u>RESPIRATORY PROTECTION</u>	It is usually safe to not use respiratory protection. However, there may be circumstances where use of a mask or other device is appropriate. Use judgement. For assistance in selecting suitable equipment consult AS/NZ1715.
<u>EYE PROTECTION</u>	Eye protective measures are normally necessary, and are suggested when using this product. Consult AS1336 and AS/NZ1337
<u>PROTECTIVE GLOVES</u>	Rubber, PVC or other protective gloves are necessary, and desirable, especially if product is being used frequently or for lengthy periods. Consult AS2161 for guidance.
<u>CLOTHING</u>	Clean overalls should be worn, preferably with an apron. Consult AS2919 for clothing guidance.
<u>SAFETY FOOTWEAR</u>	Wearing safety boots is advisory. Consult AS/NZ 2210 for advice on Occupational Protective Footwear.

SECTION 9 PHYSICAL AND CHEMICAL PROPERTIES

<u>Appearance:</u>	yellow medium viscosity gel.
<u>Flammability:</u>	not flammable
<u>Melting Point:</u>	0°C
<u>Boiling Point:</u>	100°C
<u>Flash Point:</u>	unknown
<u>Vapour Pressure:</u>	unknown
<u>Volatiles:</u>	>98%
<u>Vapour Density</u>	unknown
<u>Flammability Limits</u>	unknown
<u>pH</u>	7.0-8.0
<u>Specific Gravity:</u>	1.0-1.1
<u>Solubility in water</u>	soluble
<u>Additional information</u>	The product is not corrosive to copper, brass, zinc and zinc alloys, mild or stainless steel if in contact with these materials over an extended time period.

SECTION 10 STABILITY AND REACTIVITY

Chemical stability	Stable
Conditions to avoid	Do not freeze
Incompatible materials	Oxidising Agents (Class 5) and Acids (Class 8)
Hazardous decomposition products	Combustion will release toxic gasses. (COx)
Hazardous reactions	None known

SECTION 11 TOXICOLOGICAL INFORMATION

Health effects from the likely routes of exposure

SYMPTOMS OF EXPOSURE

Swallowed:	Short term exposure by all routes is considered to be practically non-harmful.
Eye:	May be a mild eye irritant.
Skin:	Repeated or prolonged skin contact may lead to mild irritation, particularly if skin is left moist.
Inhalation:	Inhalation of dust residue may result in respiratory irritation.

ACUTE**DELAYED***Additional information**Aggravated medical conditions caused by exposure*

SECTION 12 ECOLOGICAL INFORMATION

ECOTOXICITY	Low
PERSISTENCE AND DEGRADABILITY	Product is biodegradable
MOBILITY	Water dilutable – product is mobile
<i>ADDITIONAL INFORMATION</i>	
<i>ENVIRONMENTAL FATE (EXPOSURE)</i>	Biodegradable
<i>BIOACCUMULATIVE POTENTIAL</i>	Unlikely to bioaccumulate

SECTION 13 DISPOSAL CONSIDERATIONS

DISPOSAL METHODS AND CONTAINERS	Refer to State Land Waste Management Authority. Empty containers must be decontaminated. Normally suitable for disposal at approved land waste site.
SPECIAL PRECAUTIONS FOR LANDFILL OR INCINERATION	

SECTION 14 TRANSPORT INFORMATION

UN NUMBER	Not applicable
UN PROPER SHIPPING NAME	Not applicable
CLASS AND SUBSIDIARY RISK	Not applicable
PACKING GROUP	Not applicable
SPECIAL PRECAUTIONS FOR USER	
HAZCHEM CODE	Not applicable

SECTION 15 REGULATORY INFORMATION

Poison Schedule	Not scheduled
OHS	Not considered a hazard
Environmental	Not considered a hazard
<i>Additional information</i>	
<i>Additional national and/or international regulatory information.</i>	

SECTION 16 OTHER INFORMATION

Date of preparation or last revision of the MSDS	25 August 2016
Prepared by	Glenn Bowring B App Sc (App Chem)
<i>Additional information</i>	
<i>Key/legend to abbreviations and acronyms used in the MSDS.</i>	
ADG	Australian Code for the Transport of Dangerous Goods by Road and Rail
ACGIH	American Conference of Governmental Industrial Hygienists
ASCC	Australian Safety and Compensation Council
Carcinogen Category Number	<ol style="list-style-type: none"> 1. Established human carcinogen 2. Probably human carcinogen 3. Substances suspected of having carcinogenic potential
Code AICS	Australian Inventory of Chemical Substances
CAS number	Chemical Abstracts Service Registry Number
EPG	Emergency Procedure Guide (superseded by IERG)
Hazchem Code	Emergency action code of numbers and letters that provide information to emergency services especially firefighters
IARC	International Agency for Research on Cancer
IATA	International Air Transport Association
IERG	HB 76-2004 Dangerous goods - Initial Emergency Response Guide
IMDG	International Maritime Dangerous Goods. A uniform code for transport of dangerous goods at sea.
LEL	lower flammable (explosive) limits in air;
LD₅₀	Lethal Dose sufficient to kill 50% of test population
NIOSH	National Institute for Occupational Safety and Health The United States federal agency responsible for conducting research and making recommendations for the prevention of work-related injury and illness.
NOAEL	No Observed Adverse Effect Level
NOEL	No Observable Effect Level
NOHSC	National Occupational Health and Safety Commission
NTP	National Toxicology Program (USA)

PEL	Permissible Exposure Limit
RTECS	Registry of Toxic Effects of Chemical Substances (Symyx Technologies')
TCL_o	Toxic Concentration Low
TD_{Lo}	Toxic Dose Low : lowest dosage per unit of bodyweight (typically stated in milligrams per kilogram) of a substance known to have produced signs of toxicity in a particular animal species.
TLV	Threshold Limit Value (ACGIH):The time weighted average used to describe exposure which is harmless to most of the population when exposed 8 hours per day, 40 hours per week.
TWA	(Time Weighted Average): The average airborne concentration of a particular substance when calculated over a normal eight-hour working day, for a five-day week. These exposure standards are guides to be used in the control of occupational health hazards. All atmospheric contamination should be kept to as low a level as is workable. These exposure standards should not be used as fine dividing lines between safe and dangerous concentrations of chemicals. They are not a measure of relative toxicity.
SAFEWORK	Independent statutory agency with primary responsibility to improve occupational health and safety and workers' compensation arrangements across Australia.
STEL	(Short Term Exposure Limit): The average airborne concentration over a 15 minute period which should not be exceeded at any time during a normal eight-hour workday.
SUSDP	Standard for the Uniform Scheduling of Drugs & Poisons
SUSMP	Standard for the Uniform Scheduling of Medicines & Poisons
UEL	upper flammable (explosive) limits in air;
UN Number	United Nations Number
<i>Literature references.</i>	Safety Data Sheets from Suppliers
<i>Sources for data.</i>	Hazardous Substances Information System (HSIS)– ASCC Australia (on-line) GHS (Globally Harmonised System of Substance Classification & Labelling) REACH (European Chemical Substance Information System) ADG Code 7 th Edition SUSMP N ^o 10

DISCLAIMER:

This MSDS summarizes our best knowledge of the health and safety hazard information of the product and how to safely handle and use the product in the workplace. Each user should read this MSDS and consider the information in the context of how the product will be handled and used in the workplace including its use in conjunction with other products. If clarification or further information is needed to ensure that an appropriate risk assessment can be made, the user should contact ALLTRADES MANUFACTURING PTY LTD Pty Ltd. Our responsibility for products sold is subject to our standard terms and conditions, a copy of which is sent to our customers and is also available on request. ALLTRADES MANUFACTURING PTY LTD Pty Ltd however makes no warranty whatsoever, expressed, implied or of merchantability regarding the accuracy of such data or the results to be obtained from the use thereof and assumes no responsibility for injury to buyer or third persons or for any damage to property, Buyer assumes all risks.